



**SPOTLIGHT**

# HURRICANE RESPONSE

Tidewell colleagues and  
supporters pull together

page 6

**Caring Quarterly**

Fall 2022

“ We knew our colleagues were special, but they have continued to demonstrate a level of care and commitment that is difficult to put into words. ”

Dear Friends and Supporters,

This issue of *Caring Quarterly* was scheduled to go to press about the time Hurricane Ian was making landfall. In that original opening letter, we reminisced about Fall and the upcoming holidays as a season of gratitude and giving. While that is unchanged, Hurricane Ian made us reflect more earnestly on what it means to be grateful and, more important, what it means to be humble in the service of others.

The hurricane affected our colleagues throughout southwest Florida. Yet, Tidewell Hospice and Empath Health patients and families remained in good hands. We knew our colleagues were special, but they have continued to demonstrate a level of care and commitment that is difficult to put into words.

Before, during and after the storm, colleagues never lost focus on our mission. They prepared patients for the hurricane's arrival with extra medicine and supplies. Colleagues locked themselves inside our facilities to care for patients in person and over the phone even as the storm raged outside. Afterward, they accounted for all patients, and continued to serve even when managing power outages, difficult roads, and damaged homes.

Simultaneously, our colleagues were there for each other, supporting one another through donations, hauling food and supplies and rallying people and donors to the cause.

As with our affected communities, we have a long way to go in rebuilding and recovery. Yet, we feel stronger and more confident knowing we are all in this together.

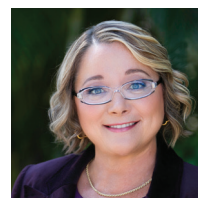
Thank you for your support. We are grateful for you, your willingness to make a difference, your willingness to stand for what matters, and your courage to care.

Yours in the mission,

**Jonathan D. Fleece**  
President, Empath Health  
President and CEO, Tidewell Hospice



**Debbie Mason, CFRE, APR, CPRC, FELLOW PRSA**  
President, Tidewell Foundation  
EVP /Tidewell Hospice



McCune  
Family Foundation

Wilson-Wood  
Foundation, Inc.



## Tidewell's Grief Programs Earn Grant Support

Several recent grants to the Tidewell Foundation are in the support of Tidewell Hospice's free community grief programs, including the Blue Butterfly program for children. We thank the following organizations:

- Donors of Distinction: \$5,000
- McCune Family Foundation: \$40,000
- Sisterhood for Good: \$3,000
- Wilson-Wood Foundation: \$20,000

A special \$20,000 grant from The Brave of Heart Fund, working with the National Alliance for Children's Grief was provided for grief care for people in our community suffering a loss due to COVID-19.

Tidewell Grief Care and Tidewell Blue Butterfly provide evidenced-based therapies for adults and children struggling with grief. The programs are open to anyone in the community, regardless of whether they had a hospice experience.

"We are so grateful to community support for these important programs," said Debbie Mason, President of Tidewell Foundation. "Tidewell's grief programs help brighten the lives of those in need."

## Grant Support Helps Fill Gaps For Patients' Varying Needs

**Ralph S. French  
Charitable Foundation**

A \$65,000 grant from the **Ralph S. French Charitable Foundation** will help ensure that Manatee County residents in need of the care and services of Tidewell Hospice receive it, regardless of their ability to pay. Each year approximately \$2 million of free care is available to those who cannot afford it.



**Boca CARES granted Tidewell \$2,000** to support Tidewell Hospice's integration of Eversound Devices for Hearing Enhancement into patient care. Eversound helps patients with hearing loss communicate with caregivers, friends and family.

"Tidewell is committed to ensuring all who need care receive it and that the care is meaningful, relevant, compassionate and uplifting," said Debbie Mason, President, Tidewell Foundation. Donations are critical to this success.

## EVENTS SPOTLIGHT

Empath  
TIDEWELL  
FOUNDATION  
14th Annual  
SIGNATURE  
LUNCHEON

### Save the Date

Save the Date for Tidewell Foundation's 14th annual *Signature Luncheon* is 11:30 a.m., **Friday, March 3, 2023**, at the Ritz-Carlton, Sarasota. This year's luncheon is offered in tribute to our region's veterans and promises to be an inspiring celebration.

Enjoy beautiful surroundings, an amazing meal and an engaging program as we recognize our Tidewell Honors Veterans program and the other uplifting programs of Tidewell Hospice that are made possible only by donor support to the Tidewell Foundation.



## Community Celebration of Life Grief Ceremony

Welcoming all who are experiencing grief in some form, Tidewell Hospice, in partnership with Tidewell Foundation, is holding a community Celebration of Life service on **Sunday, November 13, 2022**, at Marie Selby Botanical Gardens at Historic Spanish Point in Osprey. The program begins at 5 p.m.

The event will allow families, friends, and hospice staff and volunteers to honor the special person in their lives and remember their legacy. It will include music, reflection and an opportunity to gather as a community in celebration of those dear to them.

"Families have been through so much in the past couple of years as they also cope with the loss of loved ones and adjust to new lives," said Jonathan Fleece, President of Empath Health. "The hurricane added to feelings of loss. We look forward to this time and place where people can gather to process their grief and rekindle hope."

There is no cost to attend, and no RSVP is required. The event is outdoors; rain will mean cancellation or postponement.

Tidewell's adult community grief program as well as the Blue Butterfly program for children are offered at no charge to participants, thanks to the generosity of our donors.

5 p.m.  
**Sunday,  
Nov. 13, 2022**  
(Parking 4:15 to 4:45 p.m.)  
**Historic  
Spanish Point,**  
(Marie Selby Botanical Gardens),  
**337 N. Tamiami Trail,  
Osprey**  
**No RSVP needed.**



## Col. Tillman Program Postponed

The program featuring Col. Mark W. Tillman scheduled for September 28, was postponed due to the hurricane. Tidewell Hospice and Tidewell Honors Veterans, in partnership with Tidewell Foundation, anticipate bringing the former Air Force One Commander and Pilot to Sarasota in **September 2023**, in a program offered in remembrance of 9/11. Please watch for the new date to be announced soon. Special thanks to the Community Foundation of Sarasota County for their support of this event.

## Save the Date

### End-of-Life Planning Seminar Has LGBTQ Focus

A properly developed end-of-life plan can help ensure that your needs and wishes are carried out. However, many in the LGBTQ community forego advanced care planning conversations out of fears around discrimination.



In partnership with Equality Florida and Truist, Tidewell Foundation will hold an end-of-life advanced care planning and estate planning seminar on **Thursday, January 26, 2023, at 5 p.m.** at the Sarasota Yacht Club. Participants will gain an overview of estate planning, and can ask questions. Details to come.

## EVENTS SPOTLIGHT



## TIDEWELLtrot

BENEFITTING THE TIDEWELL FOUNDATION

### Tidewell Trot 5K and 1 Mile Run/Walk

**Thank you** to everyone who participated in the 2022 AllTrust Insurance Tidewell Trot 5K and 1 Mile Run/Walk on Nov. 5 at Nathan Benderson Park.

We thank our presenting sponsor



**All Trust Insurance** and other sponsors including Water Station sponsor

**IAN BLACK REAL ESTATE** THE PLACE FOR SPACE **Ian Black Real Estate;** Gold Sponsors: **Lakewood Ranch**

**Commercial** and **Target Graphics;** Silver Sponsor: **Benderson Development;** and Bronze Sponsors: **Fawley Bryant Architecture, Florida Power & Light, Frederick Derr & Company, Inc., Lakewood Ranch Medical Center, Leadership Simplified, Sean McCutcheon's Air Conditioning and Heating, Inc., The Resort at Longboat Key Club and Willis Smith Construction.**

Visit [TidewellFoundation.org/Events](https://TidewellFoundation.org/Events) for results and photos.

# HURRICANE RESPONSE

Tidewell colleagues and supporters pull together



**On Wednesday**, September 28, as Hurricane Ian was inching closer to Florida's west coast, teams of Tidewell Hospice caregivers locked themselves inside Hospice Houses and call centers, often miles from home, prepared to spend the next few days doing all they could to support patients.

Once the storm passed, colleagues fanned out across our communities to get supplies where they were needed and to get back to their patients.

There were "those who stayed awake through the night, miles from their homes to provide vital operations to our organizations; those who drove white-knuckled down what were once roads to deliver life-sustaining supplies to our teammates and our community; those who left homes flooded with water to provide others with full life care," said Lynne Craver, Chief Mission Implementation Officer of Empath Health (parent not-for-profit company of Tidewell Hospice, Tidewell Foundation and Empath Home Health.)

Colleagues then attended to each other's care, rushing food, water and supplies to those in need. Tidewell Foundation and Empath Health board members drove specially prepared restaurant meals to Port Charlotte for weary staff.

Responding to the social media post of a former classmate—the wife of an Empath Home Health colleague—a family and their friend drove overnight from Beaver, PA., with two trailers of supplies for Tidewell and others in Fort Meyers. They told us they had been praying for us.

Extraordinary stories continue to emerge of the often-heroic efforts of Tidewell and Empath colleagues in service to our communities, buoyed and sustained by a commitment to the mission and the outpouring of support.

Jonathan Fleece, President and CEO of Tidewell Hospice and President of Empath Health, spoke of his "gratitude to so many Empath leaders, colleagues, volunteers, donors and angels who have shown us a bright light of support, hope, and caring in the midst of recent dark moments."

**We are grateful  
"to so many Empath leaders,  
colleagues, volunteers, donors  
and angels who have shown us  
a bright light of support, hope,  
and caring in the midst of  
recent dark moments."**

*~Jonathan Fleece,  
President and CEO of Tidewell Hospice  
and President of Empath Health*

Jonathan Fleece, President and CEO of Tidewell Hospice and President of Empath Health, spoke of his "gratitude to so many Empath leaders, colleagues, volunteers, donors and angels who have shown us a bright light of support, hope, and caring in the midst of recent dark moments."



**▶ Help is still needed .....**

"We are so grateful to donors who saw our need and responded," said Debbie Mason, President, Tidewell Foundation. "This will be a long recovery. Help is still needed to support our colleagues managing very challenging situations, and to ensure our programs and facilities can continue to provide Tidewell's world-class care."

Donate to the  
Tidewell Hurricane Ian Fund  
[TidewellFoundation.org/Donate](https://TidewellFoundation.org/Donate)

Donate gently used items to  
Sarasota and Venice  
**Tidewell Treasures Resale Stores**

# GIVING SPOTLIGHT

## End-Of-Year Gifts

End-of-year gifts to the Tidewell Foundation allow us to meet Tidewell Hospice's on-going and expanded needs throughout the year.

As you plan year-end giving, please keep these tips and dates in mind:

- Gifts must be received on or before **Dec. 31, 2022**.
- Checks sent by U.S. Postal Service must be postmarked **on or before Dec. 31**; checks via other carriers such as FedEx or UPS must be received by 5 p.m.
- **Plan early:** Gifts of mutual funds can take as long as six weeks to complete. Your broker can detail their internal processes.
- For Qualified Charitable Distributions (IRA Charitable Rollover), notify your plan administrator no later than **December 15** that you intend to make a gift from your IRA.
- Stock transfers may take up to four days to complete the process; initiate the transfer by **December 27**.
- Wire transfers must be received in our account **by 11:59 p.m., Dec. 31**.

We hope you remember Tidewell Foundation at the end of the year.

**Each gift has an immediate and positive impact on our community.**



## Top 5 Reasons To Give From Your Will

When you include Tidewell Foundation in your estate plan, your generosity provides care and compassion for all those who need it. While there are many ways to leave a legacy gift, remembering us in your will has many benefits.

- 1. It can lessen anxiety and lend perspective.** Planning ahead can make it less daunting to talk about what happens when you're gone. Plus, taking stock of what's important can help you focus on your goals and be more aware of how you want to impact the world.
- 2. It can be adjusted.** A gift in your will is revocable, which means it can be changed at any time—that includes the amount, the assets, and the area of purpose you are supporting. You are free to alter your plans to reflect life's changes.
- 3. It reflects your personal legacy.** A gift in your will is an opportunity to contribute to a cause meaningful to you and have it reach beyond your lifetime. It's also likely to be the biggest gift you have ever made, creating a large impact.
- 4. It is versatile.** Through your will, you can give a specific item, an amount of money, a gift contingent upon certain events or a percentage of your estate. Equally, you retain control of your assets during your lifetime.
- 5. It makes a huge difference.** When you give a gift in your will, you are making that organization part of your family. Your generosity is deeply felt.

**Every gift is meaningful and helps us continue our mission. Find useful planning tools at [TidewellFoundation.org](https://TidewellFoundation.org)**



# GIVING SPOTLIGHT



## Season Of Giving Brings Opportunities To Support Children and Families

Tidewell Foundation has two ways to support families this holiday season.

### 1 Thanksgiving Meal Drive

The annual Thanksgiving Meal Drive provides meals to individuals and families in the care of Tidewell Hospice and Empath Home Health.

Last year, 428 fully prepared heat-and-serve Thanksgiving meals were delivered to grateful patients and families thanks to Tidewell Foundation donors and volunteer support. Families were able to enjoy a stress-free meal while spending quality time with their loved ones.

You can help this year's drive by purchasing meals via the websites below, by volunteering, or by making a tax-deductible donation to Tidewell Foundation at **TidewellFoundation.org** to purchase meals on your behalf.

**Meals will be delivered by volunteers on Wednesday, November 23.**

Special thanks to Morton's Gourmet Market & Catering, and Pier 22 and GROVE restaurants.



> **Grovelwr.com**  
Order by Noon on  
Tuesday, November 22



> **MortonsMarket.com**  
Order by Noon on  
Thursday, November 17



> **PIER22.COM**  
Order by Noon on  
Tuesday, November 22

### 2 Blue Butterfly Holiday Gift Drive

Gather your family, friends, social group, church group or co-workers to support the Blue Butterfly Holiday Adopt a Family Gift Drive.

Blue Butterfly is Tidewell Hospice's free grief care program for children.

**Each year children, with support of their family or caregiver, make specific requests that are filled by thoughtful donors.**

Gifts become a very special memory for children and their caregivers. What a great mitzvah of caring of other people, which is available to your family, church, civic or social group to take on as a project.

**If you are interested in participating, please email [MeganWenger@tidewellfoundation.org](mailto:MeganWenger@tidewellfoundation.org)**



## BRIGHTER DAYS STORY

# Wish Restored Fisherman's Fond Memories Of The Sea

It was as if the sea creatures at Mote Marine Laboratory and Aquarium knew Francisco Colon Jr. and Tanya Silva were coming.

Hugh and Buffett, Mote's resident manatees, ambled to the front of their tank to munch on kale and lettuce and swoop down for pictures. Two



otters awoke from an afternoon nap to frolic in the water. A huge sea turtle flapped its flippers in an elegant maneuver from the bank of the tank to the front.

It was just the type of day Tanya, Francisco's partner of six years, envisioned when the Tidewell Hospice social worker, Jennifer, explained the Tidewell Wishes Fund, which fulfills end-of-life wishes for patients and their loved ones.

So Tanya picked Mote for Francisco's Tidewell Wish. "I figured since he likes sea life, and so do I, it would be a nice day," Tanya said.

Neither Francisco nor Tanya, a Venice native, had ever been to Mote Marine.

Francisco, 64, was admitted to Tidewell Hospice, a member of Empath Health, a week earlier.



His lymphoma is advancing rapidly. He also experiences the effects of a stroke he suffered four years ago.

"He tells me 'Don't cry.' Today's a good day," said Tanya, who met Francisco when both worked as caregivers at a healthcare facility.

Francisco was alert. He was able to communicate in short phrases and gestured at the animals he liked most. A native of the Bronx, N.Y, Francisco moved to Florida about 18 years ago to live in the sunshine. He loved deep-sea fishing. Francisco enjoyed seeing fish he used to catch, particularly tarpon and grouper.

The Tidewell Wishes Fund paid for a round-trip medical transport from Venice. Mote Marine, one of Tidewell's many not-for-profit partners, contributed the V.I.P. tickets.

*~Article By Andrea Heenan*



**DONORS** who support the Wishes fund are giving people the opportunity to share in life's most significant end of life moments and uplift them at difficult times.

**Learn how you can support Wishes at: [TidewellFoundation/Wish.](https://www.tidewellfoundation.org/wish)**

# EXTRAORDINARY CARE TAKES EXTRAORDINARY SUPPORT

Dear Tidewell Foundation Supporter,

Hurricane Ian devastated much of southwest Florida in late September, including much of Tidewell Hospice and Empath Home Health's service area. Colleagues and patients in south Sarasota, Charlotte, DeSoto, Collier, and Lee counties were deeply impacted by this Category 4 hurricane.

Many of our 1,200 colleagues suffered devastating losses. Some are living in a damaged home or no longer have a home, some are without vehicles, and some evacuated with only the clothes they were wearing and do not have replacements. These circumstances have created many barriers for our clinical care teams to reach the vulnerable patients we serve to meet their urgent healthcare needs.

In the days that followed, we pulled together to ensure colleagues had their emergency needs met. We supplied those who had lost almost everything with food, water, diapers, pet food, and so much more to get them through the first few weeks after the storm.

Now our focus is shifting to long-term needs. We know this will be a long recovery and we need to stabilize colleagues so that they may continue to provide full-life care to all. These needs include temporary housing, relocation expenses, and replacement clothing and personal items. For many colleagues who live paycheck to paycheck, high insurance deductibles, vehicle repairs and home repairs are further challenges.

The Tidewell Foundation is committed to supporting our caring and compassionate colleagues and patients during this challenging time. And we need your help.

For more than 40 years, we have been there for our community. We need your help to ensure we can continue to be there for those who need us when it matters the most.

Please give what you can to help ensure we can meet the needs of our patients, colleagues, and community—now and as long into the future as they need us.

**Thank you for your support.**

Sincerely,



**Debbie Mason**, CFRE, APR, CPRC, FELLOW PRSA  
President, Tidewell Foundation  
EVP, Tidewell Hospice



**PS** Your support is urgently needed to provide critical care to vulnerable patients and to help those colleagues who are there for them, even in the most difficult of times.

# What's Inside



empath  
**TIDEWELL FOUNDATION**  
3550 S. Tamiami Trail,  
Sarasota, FL 34239

NONPROFIT ORG  
U.S. POSTAGE  
**PAID**  
MANASOTA, FL  
PERMIT NO. 1264

## We're Here to Help You Plan!

No matter how you donate —or how much— our donor advisors are available to help you plan your gift, event, or sponsorship.

**Planned Giving, Corporate Sponsorships,  
Gifts from Foundations, DAF, and Individuals**



**Debbie Mason, CFRE, APR, CPRC, Fellow PRSA  
President**  
dmason@tidewellfoundation.org, 941-552-7658

### MANATEE COUNTY/ALL COUNTIES RESIDENTS

**Delesa Morris, MS, CFRE, Sr. Vice President**  
delesamorris@tidewellfoundation.org, 941-552-7685

### SARASOTA COUNTY RESIDENTS

**Chris Pfahler, CFRE, BSN, RN, Senior Philanthropy Advisor**  
cpfahler@tidewellfoundation.org, 941-552-7651

### CHARLOTTE & DESOTO COUNTY RESIDENTS

**Nicole Taylor, Philanthropy Advisor**  
ntaylor@tidewellfoundation.org, 941-416-5017

### Annual Giving and Third Party Events

**Megan Wenger, CFRE, Sr. Philanthropy Advisor**  
meganwenger@tidewellfoundation.org, 941-552-7515

Tidewell Foundation is grateful to our sustaining annual corporate partners for their ongoing sponsorship of the Foundation's work.

Partners in Excellence:



Partners in Compassion:



Other: **TRUIST**

The Tidewell Foundation, Inc., is a registered 501(c)(3) non-profit corporation. A copy of the official registration and financial information may be obtained from the Division of Consumer Services by calling Toll-Free 1-800-435-7352 or 1-800-352-9832 (en Español) or going to the department's website [www.floridaconsumerhelp.com](http://www.floridaconsumerhelp.com). Registration does not imply endorsement, approval, or recommendation by the state. One hundred percent (100%) of the donation is received by the Tidewell Foundation, Inc. Charitable solicitation registration #CH63240.

empath  
**TIDEWELL FOUNDATION**

TF-090822-0830