



live

bri ghter

 **empath**
TIDEWELL
FOUNDATION

 **empath**
TIDEWELL
HOSPICE

Community Impact Report

Fiscal Year 2022

Dear Friends and Supporters

Tidewell Foundation exists to provide perpetual philanthropic support to Tidewell Hospice and portions of the Empath Health integrated network of care. Our mission is to brighten lives in our community by advancing care and compassion for all those who need it.

Now entering our third year as a foundation, donations continue to grow, allowing us to meet our commitment to support hospice, home health, grief counseling and unique therapeutic services in our region.

Further, donors have joined us in deepening our commitment to the community through special programs such as our annual Linens and Love and Thanksgiving Meal drives.

We are truly grateful to each donor, foundation, association, civic group and volunteer for your trust and investment in Tidewell. You are the ones who help ensure that all who need the world-class care of Tidewell Hospice receive it. You help ensure that our community commitment to one another in times of need is possible.

Please enjoy reading this report. It is the story of care, kindness and compassion.



A handwritten signature in black ink that reads "Jonathan D. Fleece".

Jonathan Fleece, Esq.
President and CEO Empath Health
and Affiliate Programs



A handwritten signature in black ink that reads "Delesa Morris".

Delesa Morris, M.S. CFRE
Interim President, Tidewell Foundation



Care
Kindness
Compassion



Tidewell Foundation provides philanthropic support to Tidewell Hospice and the not-for-profit Empath Health affiliate organizations in Sarasota, Manatee, Charlotte, DeSoto, Lee, and Collier counties. Charitable contributions to the Tidewell Foundation sustain and grow the critically important programs provided in these areas.

Board of Trustees

October 1, 2022 – September 30, 2023



Judith Berlow
Board Member



Dan Deemes, MD, PhD
Board Member



Renee Eppard
Board Chair



Steve Hall
Treasurer



Dean Hautamaki,
MD, FCCP, FACP
Board Member



Victoria Kasdan,
RN, BSN, MPH
Board Member



Steve Krause
Board Member



Kory D. Lee, CFP
Board Member



Jan Miller
Board Member



Tom Stuhley
Vice-Chair



Jason Toale
Secretary



Delesa Morris, M.S., CFRE
Interim President
Tidewell Foundation



Jonathan Fleece, Esq
President and CEO
Empath Health

 **empath**
TIDEWELL FOUNDATION



Board of Trustees

October 1, 2022 – September 30, 2023

Officers:

Matthew Mayer Chair
Mindy Ryals Vice Chair
Kimberlie Buchanan
Treasurer
Dan Deems, MD, PhD
Secretary

Trustees:

Kwame Alexander
James Fiorica, MD
Karen Fordham
Robert "Bob"
Hillstrom, MD
Kevin P. Logan
Marge Maisto
Fermin "JJ" Miranda
Jake Sorg



Board of Trustees

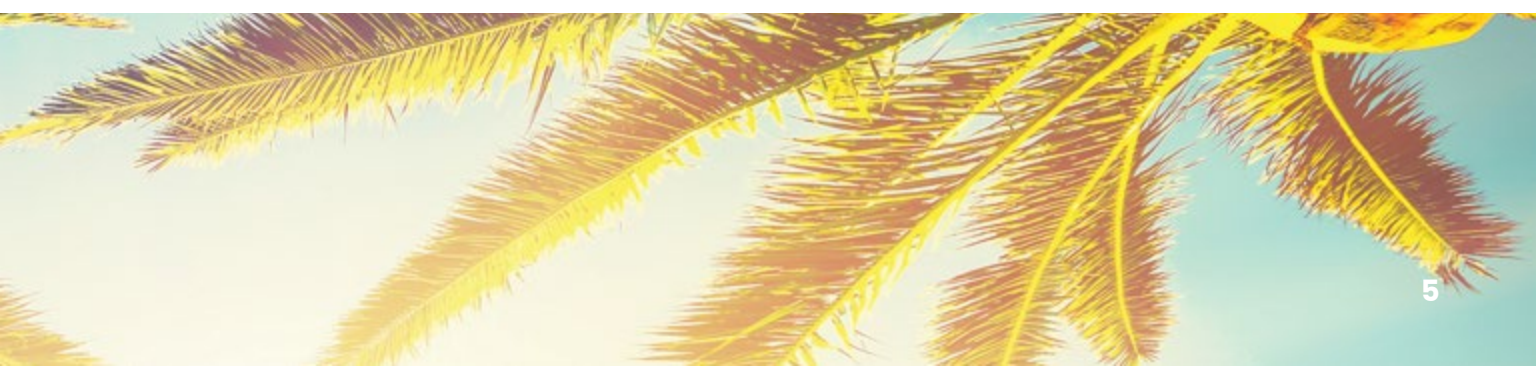
October 1, 2022 – September 30, 2023

Officers:

Tom Stuhley Chair
Ben Hayes Vice Chair
Chad Whetstone
Treasurer
Jan Miller Secretary

Trustees:

Linda de Mello
Deborah Nicklaus
Linda Plaster
Michael "Mike" R. Uselton



The Empath Health Integrated Network of Care

Unified in Empathy

Serving Southwest Florida

Founded as **Suncoast** (1977) and **Tidewell** (1980), these pioneering hospice organizations came together under the Empath Health family of care in March 2021. This created the country's largest non-profit hospice and home care-based health organization.

Tidewell Hospice and the **Tidewell Foundation** operate as independent not-for-profit affiliates with a focus of operations and fundraising support in Charlotte, DeSoto, Manatee, and Sarasota counties. Tidewell plays a fundamental role in Empath's dedication to Full Life Care.

Jonathan Fleece, Esq., formerly Tidewell Hospice President and CEO, took full leadership of Empath Health and Affiliate Programs in January 2023, from now retired CEO, Rafael Sciuillo.

“

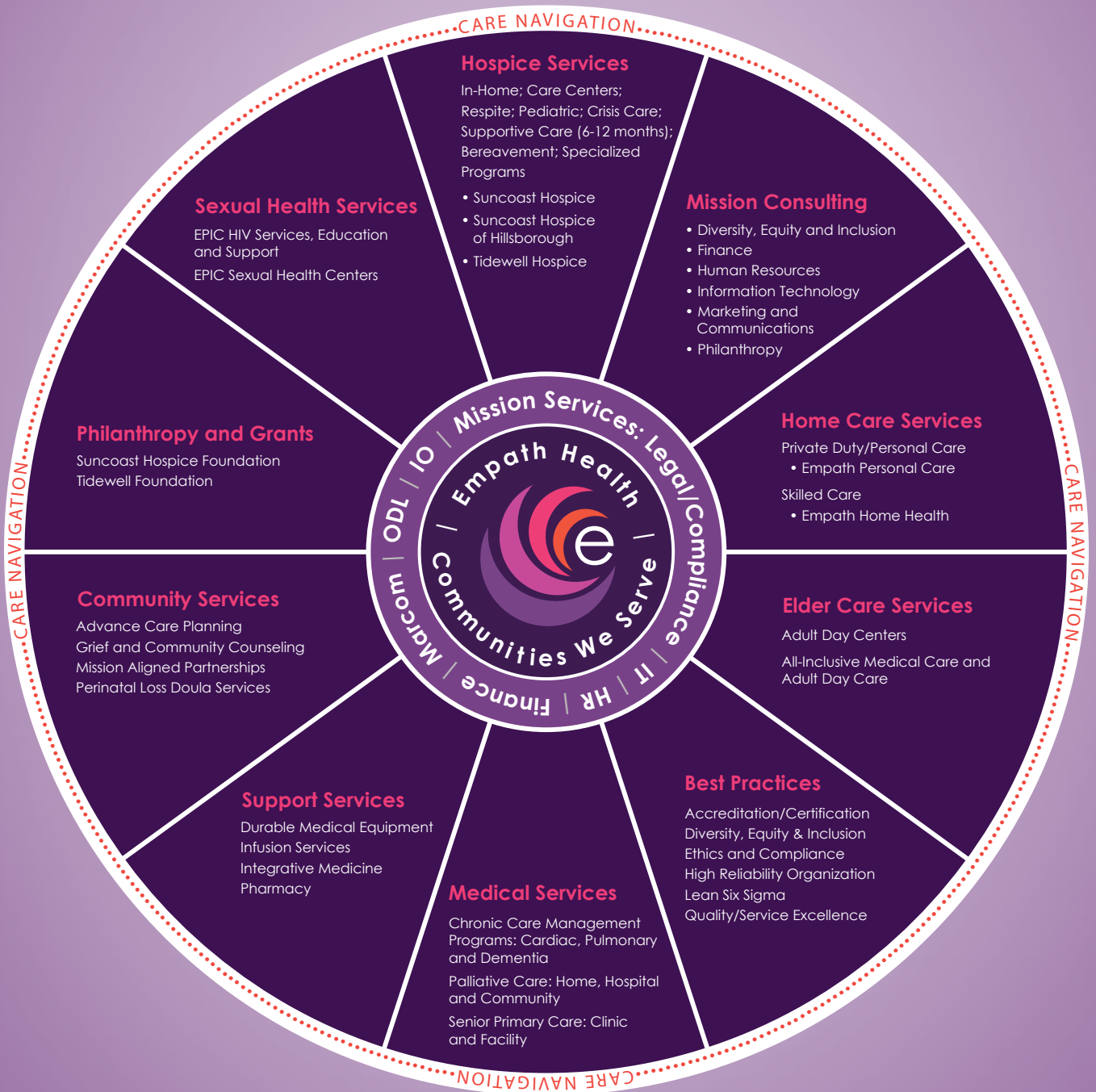
Donors can remain assured of Tidewell Foundation's never-ending commitment to supporting hospice care, complemented by Empath's growing new services in our region, including home health, palliative care, and elder care.

”

Jonathan Fleece, Esq.
Empath Health President and CEO



Empath Health Wheel of Access



Supporting Innovative Programs for Full Life Care

Empath Health's commitment to "Full Life Care," drives innovation for programs that help people at all stages of care and all dimensions of their well-being.

Reiki Therapy

Human touch has long been known to have psychological benefits. Emotionally, massage is calming and can be a distraction from pain and fear.

Tidewell incorporates Reiki Therapy into its complementary therapy programs. It is performed by trained volunteers who provide comfort through this light touch or hands off energy healing modality.

It is based on the belief that energy can stagnate in the body where there has been physical injury or emotional pain. Reiki practitioners say improving the flow of energy helps with relaxation, pain relief, healing and lessening of symptoms.

Medical and Palliative Care

Palliative care, sometimes referred to as "comfort care," is specialized medical care and support for patients living with a serious or life-limiting illness. The focus is to relieve pain, symptoms and stress at any time during a serious illness and to support patients and families as they work through difficult medical decisions.

Palliative care helps provide relief from symptoms, can help manage the side effects of medical treatments, and improves quality of life for patients and families. While a patient does not have to be under hospice care, palliative care is part of the hospice approach to end-of-life care.





Technology

Tidewell led the way in using technology to create meaningful connections for hospice and home health patients during the COVID-19 pandemic. Donors supported the purchase of iPads and virtual reality headsets. The iPads created a way for isolated patients to safely connect with families, friends and caregivers and still play an important role in connecting patients with family members far away.

Virtual Reality gives patients a powerful way to experience the world, while at home or a hospice house. Technology helps broaden the world for people in Tidewell and Empath's care.

End-of-Life Doula

Tidewell's End-of-Life Doula program pairs trained volunteers with individuals in hospice care to help the patient in care add intention and purpose to their final journey. Doulas often help patients create a legacy project for those left behind. They also provide guidance about circumstances surrounding death, such as where, who is there, and what's in the room. Doulas also sit vigil and help guide patients through pain and uncertainty.

More important, a doula becomes a dying patient's voice and advocate, helping to ensure that their intentions and wishes are met.

Tidewell Hospice By The Numbers

The Tidewell Foundation supports innovative Tidewell and Empath Health programming for this region.



11,033

Patients Served



\$0.90

of Every Dollar Going to Direct Patient Care



717

Total Number of Employees



29

Volunteers Equal To Full Time Employees



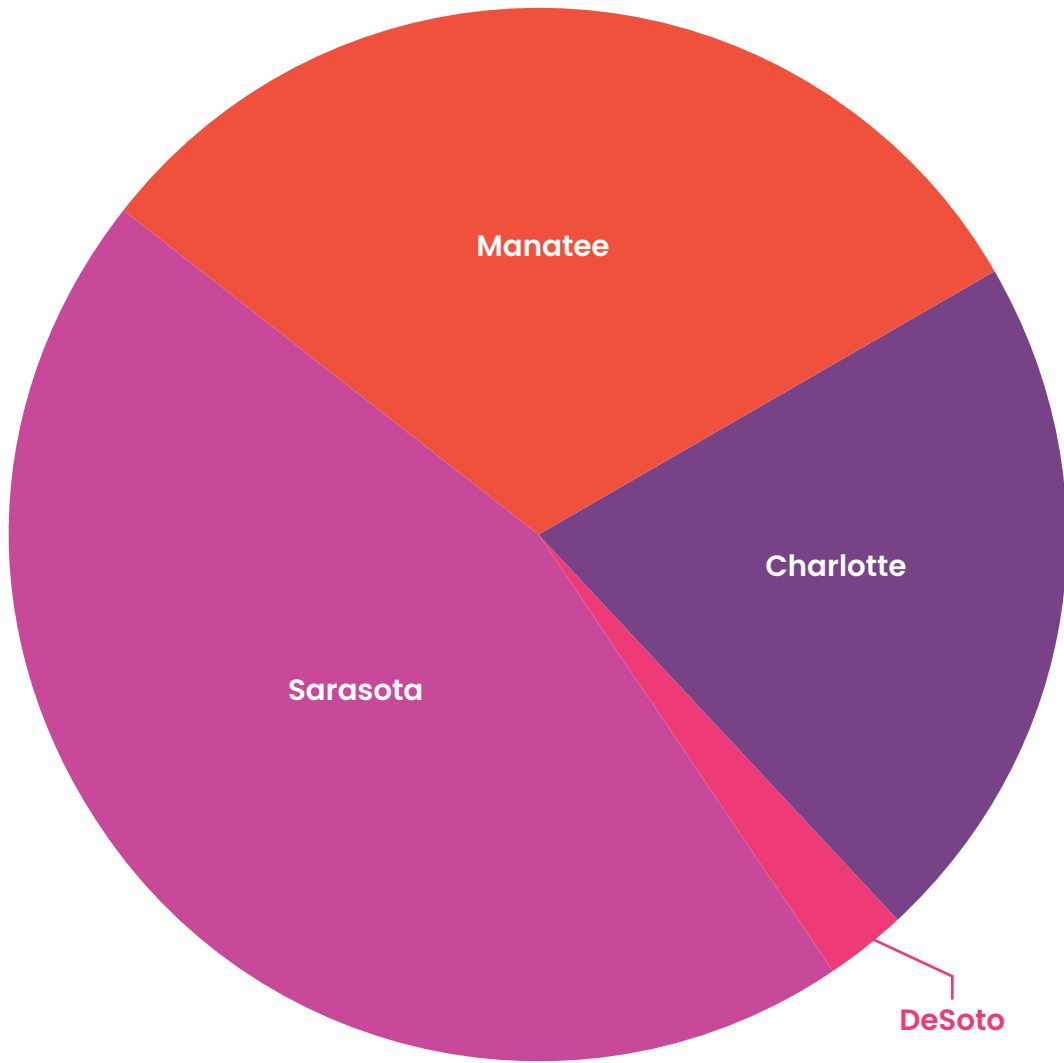
\$1,337,958.80

Value of Time Donated by Volunteers



61,099

Volunteer Hours Logged



Patients Served by County

Sarasota
5,253

Manatee
3,595

Charlotte
2,491

DeSoto
272

Licensing and Accreditation

Florida State
ACHA
Licensed

CHAP
Accredited with
deemed status

Medicare
and Medicaid
Certified

The National Institute
for Jewish Hospice
Accredited



Tidewell Foundation

Our Mission

Brighten the lives of patients, families and residents of communities served by Tidewell Hospice and not-for-profit affiliates of Empath Health by increasing awareness, funds, engagement, and advocacy to sustain and expand the exceptional programs and services offered.



A Story of Moments

When Tidewell Foundation tells its story, it's often about moments. Moments of connection. Moments of compassion. Moments that create warm memories.

- The respite care provided by a volunteer that allows a wife to shop for groceries.
- Time in the warm sunshine provided by a swing given to a 12-year-old boy.
- The touch of a loved one's hand in a couple's final hour together.
- The comfort of a hospital bed with new, clean linens.
- The relief provided by a care team at just the right time.
- The feeling of happiness returning through the help of grief services.

When we talk about brightening lives and lifting families, it is about creating connections, building relationships, and allowing for moments that matter at difficult times.

Our story is driven by compassion.
We care for those who need it most.



Community Impact



\$1M

Free
Charitable Care



\$54,607

Tidewell Honors
Veterans program



\$738,340

Nurse Residency and
Home Health Aide
programs



\$1.6M

Community Grief Center
and Grief Education
Support Services



\$304,470

Cardiac Care
program



\$794,596

Tidewell
Blue Butterfly
program



\$501,815

Complementary
Services



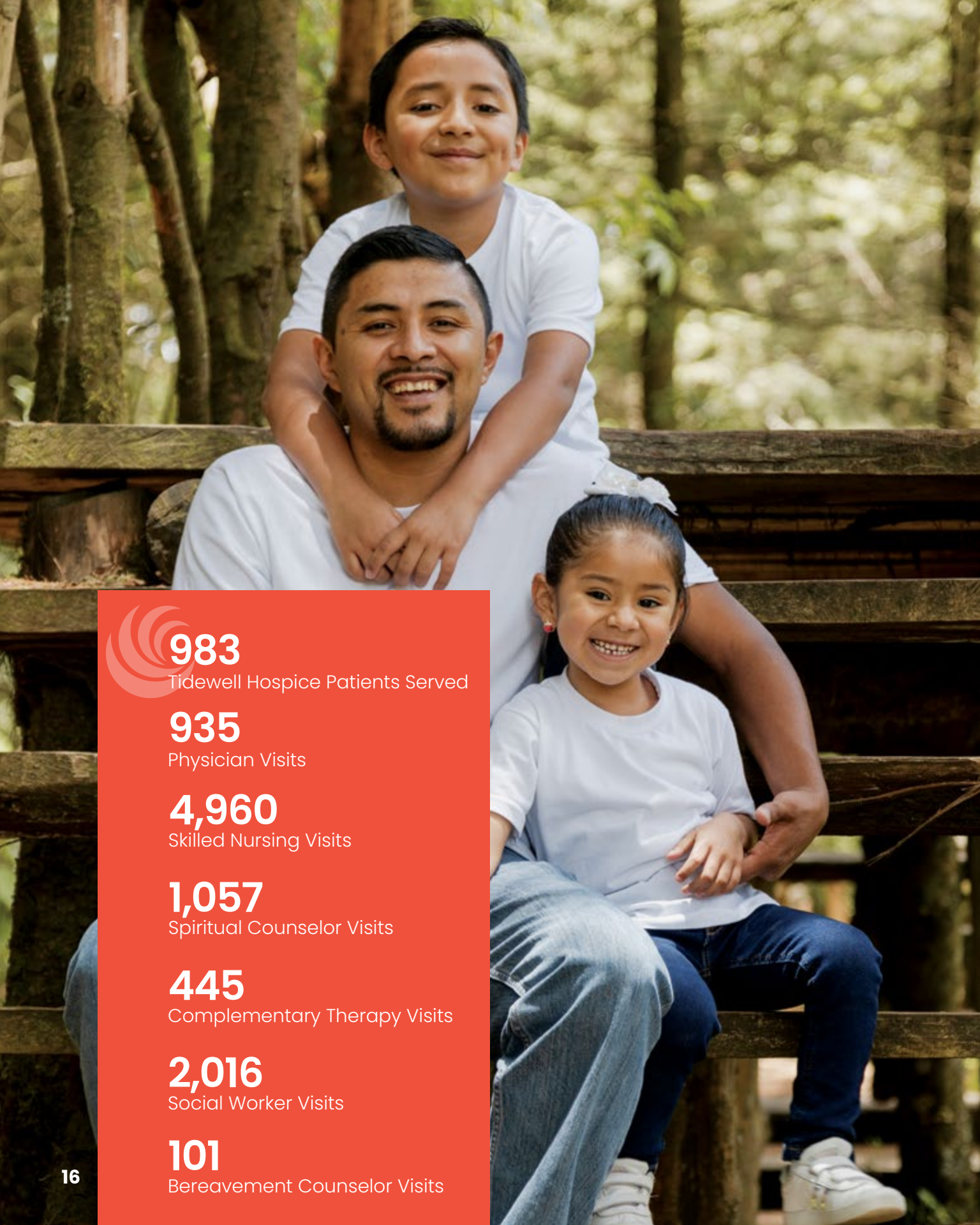
\$90,000

in Humanitarian
and Wishes Fund
fulfillments



\$66,000

Pediatric
Hospice Care



983

Tidewell Hospice Patients Served

935

Physician Visits

4,960

Skilled Nursing Visits

1,057

Spiritual Counselor Visits

445

Complementary Therapy Visits

2,016

Social Worker Visits

101

Bereavement Counselor Visits

Care for All

Providing world-class care regardless of ability to pay.

What we do

Thanks to our donors, Tidewell Foundation provides support for patients and families in our area, regardless of their ability to pay.

- Hospice services that are not reimbursed through Medicare, Medicaid or insurance may be covered through donor support.
- The Foundation ensures all patients receive quality medical care, equipment, and counseling.
- Tidewell Foundation and Tidewell Hospice combine to provide \$2 million in care to those in need.*

Your donations at work

- The single mother who lost her insurance when she became too ill to work received full services of hospice care.
- The spouse of a once fully independent person also had to stop working to provide 24/7 care. The Humanitarian Fund helped with rent until the spouse could make stable living arrangements.
- A family was able to benefit from hospice care for their child, despite insurance that didn't cover pediatric hospice care.

We help people who may be too sick to work, or those without insurance or Medicare but need treatment for serious conditions.

Why your support matters

Without donor support, hundreds in our community in need of the care and compassion of Tidewell Hospice would not receive it. Tidewell believes that all in need of care at this most difficult time should receive it.

**The total amount for charitable hospice care includes contributions by both not-for-profit Tidewell Hospice and the Tidewell Foundation.*



Grief Support

With your donations, Tidewell Foundation supports Empath Health Grief Care in its free services to families and community members who have experienced the death of a loved one.

What We Do

Empath Health Grief Care is the largest provider of free grief counseling programs in our four-county service area. These free services are available even if your loved one was not a Tidewell patient.

Your Donations at Work

- In FY 2022, Tidewell provided 9,342 free grief support sessions thanks to grants from the Tidewell Foundation.
- Tidewell Grief Care also works with first responders when tragedies occur.
- Clients are supported in group sessions and individually as needed.

Why Your Support Matters

The need is continuous, and there is a waiting list of people who need Tidewell's help. Donations will allow us to expand our services.

9,342

Adult grief support sessions

1,722

Individuals served

336

Individuals served by Empath
Tidewell Blue Butterfly



Fleece family,
Labyrinth Garden

Labyrinth Garden Grows Hope

Upon arriving at the **Tidewell Family Grief Center** in Ellenton, loved ones are embraced by beauty and solace and welcomed toward hope and healing.

Today, individuals and families can stroll through a labyrinth garden, catalyzed by a \$25,000 gift from **Jonathan Fleece**, President and CEO of Empath Health and affiliate programs, and his wife, Amy, in honor of Amy's mother who died when she and her brother were teenagers.

"We look forward to watching the labyrinth garden grow, bloom, and blossom so that families will have a place to transition from feeling 'lost' to 'found' along their journeys," said the Fleecees.

The Tidewell Family Grief Center in Ellenton was made possible through a \$1.1 million capital grant from Tidewell Foundation, including a lead gift from the Eppard Family Foundation. All the services and programs offered through the Center are free thanks to the generosity of donors to Tidewell Foundation.



Your Donations at Work

Blue Butterfly provides services in Ellenton, Lakewood Ranch, Port Charlotte, and the Newtown community of North Sarasota.

Mental health professionals use a variety of developmentally appropriate expressive arts, games, and evidence-based practices. These free services are donor-supported through Tidewell Foundation.

More than 8,000 children in the Sarasota area lose a parent or sibling each year. Generous donors ensure these critical services are available to those suffering to help process and heal their grief.

Locations

Tidewell Family Grief Center Ellenton
4151 37th St. E.
Palmetto, FL 34221

Blue Butterfly Family Grief Center
6800 Professional Pkwy. W.
Lakewood Ranch, FL 34240

Newtown-Bethlehem Bible Church
1680 18th St.
Sarasota, FL 34234

Port Charlotte-Lighthouse Baptist Church
14251 Chancellor Blvd.
Port Charlotte, FL 33953



Complementary Services

Clinically proven enhanced programs bring quality of life to those with advanced illness.

Tidewell's wide-ranging suite of complementary services support conventional treatments by helping to relieve pain and anxiety and promote a greater sense of well-being.

- A talented cook is brought herbs to smell as a sensory prompt to happy memories.
- A Certified Music Therapist plays old favorites as patients sing along or tap their feet.
- Creating art helps a patient forget her pain for a while and focus on something enjoyable.

Tidewell's complementary therapies are designed to bring spiritual and emotional comfort that medicine alone cannot supply.

Why Your Support Matters

Insurance does not cover complementary services. We are able to provide them only with donor support.

Music Therapy

5,029

Visits

1,325

Patients Served

Massage Therapy

1,667

Visits

337

Patients Served

512

Pet Therapy
Visits

305

Reiki Therapy
Sessions

46

Other (clown and other)



Jasmine Ridge
Signature Luncheon 2022

Certified Music Therapist Jasmine Ridge recalls meeting with a couple who had been married for 74 years, having met 80 years before. They decided on a legacy project: A song based on their lives. After some conversation, and Jasmine witnessing how much in love they were, she incorporated facts about their lives and penned their song: “A Little More in Love with You.” Hear the song at [TidewellFoundation.org](https://www.TidewellFoundation.org) under “Video Gallery.”

Expressive Arts

Pairing patients with professional artists or musicians, Tidewell’s industry-leading Expressive Arts program helps direct patients focus away from pain—all without side effects.

Reiki Therapy

Reiki is an energy healing technique demonstrated to create feelings of peace, relaxation and security. Trained practitioners use gentle touch to help improve flow and balance of energy.

Pet Therapy

More than 100 certified pet therapists are on call and ready to provide unconditional affection. Each Pet Therapy volunteer and animal are specially trained in hospice pet visitations.

Massage Therapy

Therapeutic massage is clinically proven to help reduce pain and stress. Licensed Massage therapists support patients as partners in their care.



Workforce Development

Recruiting, training and supporting a dedicated workforce.

Nurse Residency

The healthcare industry is facing a nationwide nursing crisis. Nursing education programs do not typically include training in end-of-life care. Tidewell provides mentoring, structured education and training for nine months, and financial support to newly licensed nurses learning hospice philosophy and end-of-life care.

Tidewell's hospice-specific Nurse Residency Program provides recent nursing graduates with the opportunity to immerse themselves in the hospice field. This field often requires prior years of experience in other clinical settings.

Home Health Aide Training

Launched with a \$100,000 grant from Bank of America to the Tidewell Foundation, the Home Health Aide Training program continues to train nurses and home health aides in the hospice specialty. Candidates receive paid training and a career ladder in the program as they move from home health aide, to CNA, LPN, RN, and more.

Why Your Support Matters

Managing the nurse shortage requires innovative training programs. Donor support is an investment in the future of hospice and home health care.

Jennifer Gross, RN, BSN, CHPN, was an accountant when she was introduced to Tidewell Hospice through her daughter's interest in volunteering in pet therapy. It didn't take long before Jennifer had realized her career ambition. She would be a hospice nurse. After completing nursing school, she was able to fast-track her way to her goal by participating in the Nurse Residency Program. She now is a respected member of the Tidewell Hospice team.





Tidewell Honors Veterans

Providing tailored services and respectfully celebrating their needs.

What We Do

Tidewell Honors Veterans is a comprehensive program focused on respectfully celebrating veterans and providing care that recognizes the unique challenges that may exist in military families. Tidewell's care teams have specific training to identify the unique needs of military veterans.

We provide care for veterans' families with specific support groups that allow loved ones and caregivers to share their experiences in a safe environment, and to connect with others with similar circumstances.

Tidewell Honors Veterans has a Level 5 Certification, the highest available, from We Honor Veterans, a national organization focused on meeting the unique needs of veterans in hospice care. Tidewell serves as a mentor to other hospice programs seeking the certifications.

1,079
Veterans Served

482
Veteran Pinning
Ceremonies



Upon request, Tidewell Hospice is proud to offer a unique pinning ceremony for veterans.

Veterans receive a special certificate of appreciation and a unique Tidewell Honors pin, which is presented by a fellow former serviceman or woman specially trained as a Tidewell veteran volunteer. The ceremony is a moving recognition of veterans' service and sacrifice.

The Need is Great

Tidewell Honors Veterans serves about 175 veterans a day and is 100 percent funded by donors. Without donor and volunteer support, the program could not exist.





A visit to Mote Marine Laboratory and Aquarium restored fond memories for Francisco, 64, and brought a cherished special day for the former deep-sea fisherman and his partner, Tanya.

“He tells me ‘Don’t cry.’ Today’s a good day,” Tanya said.

Tidewell Wishes and Humanitarian Funds

Fulfilling wishes of patients to brighten their final days.

What We Do

The Wishes Fund fulfills end-of-life wishes, such as celebrating a birthday or anniversary, family outings, travel assistance for family member visits, and tickets to special events. It helps patients and their loved ones make the most of their time together.

The Humanitarian Fund grants emergency, non-medical financial relief for patients, such as rent assistance, providing groceries or utility bill payments, and connecting families to long-term support through nonprofit partner organizations. It alleviates the burden on a patient's family, who might have lost a source of income, and allows them to focus on their loved one's medical care.

Your Donations at Work

- Dawn Marie of Bradenton had a reputation for doing things for others but asking nothing for herself. Now without family, she finally accepted a wish for dinner overlooking the gulf. She was joined by a friend on what had been an overcast day; just before sunset, the clouds cleared for a spectacular sunset.
- After her health declined rapidly, a 78-year-old Port Charlotte woman was moved from her home to a Tidewell Hospice House for care. Her husband lived in a senior center nearby but had no way to be at this wife's side at this crucial time. Tidewell Foundation covered the cost of a medical transport, and the couple were reunited one last time.

Why Your Support Matters

The Tidewell Wishes Fund and the Humanitarian Fund are 100 percent funded by donations. These additional services are never covered by traditional payment methods, so we rely on community support. Donations help patients and their families create joyful memories and ensures we can grant last wishes for years to come.

96

Patients Served Through the Humanitarian Fund

50

Patients Served Through the Wishes Fund



Tidewell Treasures

By donating gently used items and shopping at Tidewell Treasures, you benefit the work of Tidewell Hospice.

What We Do

Tidewell Treasures offers gently used, brand-name furniture and clothing, electronics, collectibles, books, music, jewelry, linens, lamps, artwork, and other home goods and accessories.

Proceeds go to the Tidewell Foundation to support Tidewell Hospice's free programs and services.

Why Your Support Matters

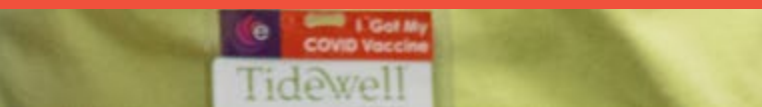
In FY 2022, Tidewell Treasures stores earned \$989,053 in revenue. Proceeds from Tidewell Treasures provide significant funding for programs not otherwise covered by insurance.

210 volunteers

78 full-time equivalent employees

Volunteers are Key to Success

Volunteers are the heart of our resale shops. It takes many volunteers per store to keep the shops running at high efficiency. They help in essential ways by greeting shoppers, sorting and pricing items, handling checkout, and supporting the mission.





 **empath**
TIDEWELL
TREASURES

Sarasota Tidewell Treasures

5441 Palmer Crossing Circle
Sarasota, FL 34238
(941) 552-7555

Venice Tidewell Treasures

523 Venice Bypass #41
Venice, FL 34285
In the Bird Bay Plaza
(941) 882-4467

TidewellTreasures.org

Volunteers are lifted by a camaraderie and dedication to the mission.

If you would like to volunteer, contact Sue Forbes at (941) 441-2061 or Sforbes@tidewell.org.





Hurricane Ian

Thank you from a grateful community.

Amid the tragedy and destruction of Hurricane Ian on September 28, 2022, Tidewell and our greater community saw the best in people.

Tidewell and Empath colleagues continued to support patients during the storm. They secured themselves in the Hospice Houses and Call Centers. When it was deemed safe to be on the road, caregivers began serving patients in person, regardless of the hardships the storm caused in their personal lives. One nurse was left with practically just the clothes on her back and yet left immediately to see patients.

And then came a community outpouring of donations and gifts, which allowed us to help colleagues who needed immediate help to meet basic life needs. A large conference room was filled and emptied of water, canned goods, flashlights, propane, diapers and much more, again and again as supplies were moved to the hardest hit areas.

Cash donations helped supply meals for colleagues and support facility needs.

“We are grateful to so many Empath leaders, colleagues, volunteers, donors and angels who have shown us a bright light of support, hope and caring in the midst of recent dark moments,” said **Jonathan Fleece**, President and CEO, Empath Health and Affiliate Programs, in the days that followed.



Our Generous Donors

October 1, 2021–September 30, 2022

1980 Society

\$1,000,000+ Donor

Anonymous(1)

Monarch Society

\$500,000 – \$999,999 Donors

Estate of John and
Eleanor Paltsits

Leaders Circle

\$250,000 – \$499,999 Donors

Stacy M. Colyer Trust
Estate of Michael J. Rodney
Schiffman, Sumiko Admin
Trust

President's Circle

\$100,000 – \$249,999 Donors

Walter and Renee Eppard
Estate of Arthur B. Schute
Julia A. and John Osborne

Advocate Circle

\$50,000 – \$99,000 Donors

Alice R. Bradley Revocable
Trust
Bruce P. O'Neill Estate
Colleen Y. Wilson Charitable
Remainder Unitrust
The Community Foundation
of Sarasota County, Inc
Dorcas Life Hunt Estate
Eleanore L. Lempke
Charitable Foundation, Inc.
Estate of Charles Robert Lewis
Deanna Housfeld
JW & DJ Pearson Charitable
Remainder Trust
The Ralph S. French
Charitable Foundation
Shirley Ann Hess Living Trust

Friend's Circle Donor Society

\$10,000 – \$49,999 Donors

Anonymous(3)
Mary E. Albrecht
Bernard and Mildred Doyle
Charitable Trust
The Brave of Heart Fund
Caldwell Trust Company
Vincent and Donna Contino
D Squared Foundation, Inc.
Davis Family Arts Foundation
Dignity Memorial
Donald Abrams and Harriet
Abrams Revocable Trust
Elizabeth T. Templeton Charitable
Remainder Unitrust
Eluned and Edward Russell
Charitable Foundation
The Estate of Iris Carter
Estate of Marcella E. Deaton
Eugene A. Reichard
Revocable Trust
Joann Flanigan
Florida Cemetery, Cremation
& Funeral Association
Franklin C. Mann Trust
Letitia Griffin
Stephen W. Hall
Walter Haskins Fund In
Memory of Stacey K. Haskins
Patricia A. Heffron
Philip H. Hubbell
The J. P. Morgan Charitable
Giving Fund
Mildred D. John
The John Family Foundation
William and Elizabeth
Johnston

Johnston Family Fund of
the Manatee Community
Foundation
KBR Foundation, Inc.
John and Catherine
Kennedy Fund
Estate of Liselotte A. Krauss
Marvin A. Yagley Trust
McCune Family Foundation
Jan Miller and James Cutler
Ann L. Morgan
National Alliance for Grieving
Children
National Hospice Regatta
Alliance, Inc.
Network for Good
Norman and Phyllis Siskel
Donor Advised Fund
The Northern Trust Company
Michael I. Pass
Gary and Marcia Pfleeger
Radey Law Firm
Vivian P. Ragsdale
Regmark Foundation, Inc.
The Robert G. and Ellen S.
Gutenstein Family
Foundation
Sam R. Rodgers
Sam S. Dickson Trust
Marc Seigel
Phyllis S. Siskel
James A. Snelgrove
Suncoast Credit Union
Foundation
Trust
Trust of Patricia Ryan Cowan
Marilyn B. West
Alison Williamson
Wilson-Wood Foundation, Inc.

Circle of Compassion Society
\$2,500 – \$9,999 Donors

Anonymous (8)
43rd Street Church of Christ
of West Bradenton Fund
Alfred Rose Foundation
The Allyn Foundation, Inc.
Anna Maria Oyster Bar
Atlanta Braves Foundation
Robin Bauer
Mary Ann Beaupre
Tom and Marie Belcher
The Benevity Community
Impact Fund
Judith T. Berlow
Patricia J. Bertram
Blalock Walters, P.A.
J. Michael Bossert
Scott and Patrice Brickman
Semmes L. Brightman
The Honorable Vernon and
Sandra Buchanan
Richard and Amy Buck
William Burnside
William C. Campbell
Ann Campion
Carl W. and Elaine P.
Meyer Fund
CoolToday
Robert E. Copeland
David Crawford
Randal and Jessica Currin
Joann Day
Kristen Dimitris
Donors of Distinction
DVD Consulting, Inc.
Edgewater Club, Inc.
Edward and Elyse Rogers
Family Foundation
Catherine Emerson
Enclara Pharmacia
Karen J. Enis
John D. Esh
Estate of William U. Funk
Ferguson Skipper, P.A.
Jonathan and Amy Fleece
Frederick J. and Phyllis C.
Bueche Fund
Robert and Joan Geyer

Cynthia Griffith
Gulfside Wealth
Scott F. Gurr
Beverly A. Harms
Jane R. Hazelnorn
Josephine K. Hennelly
Hobart K. and Janis F. Swan
Donor Advised Fund
Ian Black Real Estate
Charitable Foundation
Ian Black Real Estate LLC
J. Milton & Nellie E. Hoffa
Memorial Foundation
The Jean L. Michael Trust
Clayton and Kim Johnson
Theresa J. Johnson
Michael and Sharon Johnson
Jordan Johnson, Inc.
Barbara M. Kafer
Paul and Carol Kaplun
Katharina and Joseph
Schober Foundation
Ned Katterhenrich
Stephen and Beth Knopik
The Knowles Family Fund
Christie A. Krugler
Cynthia J. Kuhlman
Lakewood Ranch
Community Fund
Scott and Jill Levine
Levine Family Fund
Lisa C. Lindsay
Earl and Darielle Linehan
Kevin and Stacey Logan
Louis & Gloria Flanzer
Philanthropic Trust
Manatee Community
Foundation
William A. Mann
The Margaret McCartney &
R. Parks Williams Foundation
Thomas and Suzanne Marsh
John and Michelle McKay
Barbara Mehl
Robert and Susie Melum
William Menster
Meritain Health
James and Misdee Miller
Judith B. Millspaugh

Misdee Wrigley and James
Mather Miller Charitable
Foundation
Matthew Montalbano
James and Kathleen Moran
Sue L. Morey
Morgan, Lewis & Bockius LLP
MSL, P.A.
Michael H. Murray
Jackie Naclerio
Osprey Nokomis Chamber
of Commerce
Parker Hudson
Eileen Pease
Leslie Pfika
Stephen and Redenta Picazio
Pink and Navy's Fleece Fund
Les J. Pitstick
Michael S. Plunkett
Bertram Rapowitz and
Lauri C. Pollack
Terry and Colette Purcell
Gayle Rainville
RBC Wealth Management
Stacey Redmond Roberts
Cheryl S. Reynolds
Martin D. Rich
William and Mary Rigoulot
Family Fund
Karen S. Roberts
Alfred S. Rose
Rotary Club of Lakewood
Ranch, Inc.
Patricia A. Rotatori
The Rowan Foundation, Inc.
Roy K. and Elma M. Hett Trust
Gwen Rundle
Ruth H. Landes Fund
William and Barbara Salisbury
Endowment Fund
Sarasota Ford
Sarasota Private Trust
Charles and Virginia Savidge
Phyllis Savidge
Savidge Family Foundation, Inc.
William Schulz and Dell
Bauslaugh
Peter Scott-Hansen
Judith Sear

Our Generous Donors

October 1, 2021–September 30, 2022

Timothy Self and Paula
Whiting Self
Kathryn Serrell
Roger T. Simpson
Sisterhood For Good
Jon Soderstrom
Jacob and Paula Sorg
Stahl & Associates Insurance
Jeffrey and Ellen Steinwachs
Paul and Sharon Steinwachs
Astrid Stephan
Russell and Sharon Stephens
Karen A. Storey
Hobart and Janis Swan
Henry and Barbara Tafaro
Target Graphics, Inc.
Frank J. Tedesco
Jason E. Toale
Paul and Catherine Tomass
Michael R. and Tammy
Useton
Edwin E. Van Pelt
Venice Ranch Mobile
Home Estates
Pamela Weaver
Jean Weidner Goldstein
Edris C. Weis
Wellsky, Inc.
Joan M. Wheeler
Carol B. Williams
Lee Wingard

\$1,000–\$2,499 Donors

Anonymous (10)
1 Stop Landscape Supply
Yard Waste Recycling
1st Source Bank
Academy Insurance Agency
Robert J. and Shirley Adams
Woodrow J. Alagood

Carolyn W. Albrecht
Janette S. Albrecht
Thomas J. Allen
Robin Altmann
Amateur Golf Association
Manatee Chapter
Paula Amesbury
Donald T. and Georgia C.
Anderson
Anna Maria Island WOTM
Chapter 1601
Aroma Coffee Service, Inc.
Donald W. Arquette
Aviva Senior Living
Janet Baker
Bank of America Charitable
Foundation, Inc.
Susan C. Barber
Gerald R. and Sydney
Barkholz
Baycross Foundation
Benderson Development
Company
Sandra Benkner
Michael P. Berasley
Linda Berliner
Susan Billings
Suzanne J. Biviano
BOA Sisterhood Circle #155
Boar's Head Provisions Co., Inc.
Boca CARES
Boca Royale Cares Fund
Edward G. Boettcher
BOS Tampa
Boscia Family Foundation
Gilbert B. Bosse
Saida J. Bouhamid
Evelyn A. Brian
BrightView Landscape
Services, Inc.

Yukiko Brown
Paula S. Bruder
Helen Brueck
Bruce Burnett
Don and Nancy Burrer
Neva M. Burton
Celeste Byers
Sam E. Cambria
Douglas Carlson
Jay M. Cashman
Phillip and Elaine Charney
Tracy Chester
Margaret Christiansen
Jeannette Cline
Commodore Realty, Inc.
Community Bank System, Inc.
ConMed Corporation
Doris J. Cook Foundation
Lynn Corcoran
John and Catherine Cranor
Corrine Crawford
Cynthia Curtis
Lori Curtsinger
Mayo W. Darby
David Vershel Charitable
Gift Fund
David, Adrainne and Jordan
Rubin Fund
Carlo and Rebecca De Rosa
Decorative Paver Concepts
Phillip and Julie Delaney
Jason DelGiudice
Anthony and Joann
Delorenzo
Frank and Carol Depgen
Ruth B. Deterding
Ed and Deb Deuter
George Devine
Kim Devine

Dex Imaging, Inc.
 Ken Dieffenbach
 Alberto Dimillo
 Robert E. Dods
 Michael and Vindya
 Donahue
 David and Hannah D'Ottavio
 Janet Dukes
 Lauren A. Elias
 Ed and Annette Eliasberg
 Gail A. Elliott
 Jean L. Ellis
 Mitchell and Dawn Epstein
 John A. Ernst
 Sue Esber
 Estate of Arthur E. Adams Jr.
 Evelyn Brian Charitable Fund
 Joanne L. Fabec
 The Families of Robert and
 Anne Bagshaw
 Fawley Bryant Architecture
 Fidelity Brokerage Services LLC
 Kenneth Findley
 Florida Blue Foundation
 The Florida United Methodist
 Foundation, Inc.
 Susan K. Forbes
 Joanne L. Ford
 Laurie Fox
 John and Kelly Franz
 Fraternal Order of Eagles
 Ladies Auxiliary #3885
 Frederick Derr & Company, Inc.
 Barbara B. Freeman
 Louis and Carol Furlong
 Hans Gegenschatz
 Richard and Emogene
 Georgiades
 Alice Giardelli-Rolfe
 Nicola S. Gigliotti
 Lisa Gonzalez
 Christine Griffith
 Stacy M. Groff
 Michele Guffanti
 Gulf Coast Community
 Foundation
 Margaret Gutmann
 William and Kathryn Hallisey
 Elizabeth Hansen

Rebecca Hanson
 John L. Hay
 David Heagerty
 Gabrielle D. Hendricks
 Anthony N. Hobgood
 Alan G. Hoden
 W. P. Hoenle and Ursula
 Heitmann
 Claire Hopkins
 Robert Hrabovecky
 Diane Hurd
 Carol Hutchison
 Intellih Inc.
 Jack and Priscilla Schlegel
 Fund
 Sue A. Jacobson
 Jani-King of Tampa Bay
 John A. and Rosemary
 Jessup
 Jirout Kozlowski Family Fund
 Sally Johnson
 Barbara A. Jones
 D. A. Jones
 Divy Joshi
 Kent Kain
 Kenneth and Debra Karlin
 Edward and Carlene King
 Susan T. King
 Dennis M. Kirk
 Knights of Columbus
 Assembly 3192
 Knox Family Foundation
 Gerald and Janice Koler
 Joyce Koppel
 Thomas and Sherry Koski
 Steven J. Krause
 Alicia Kunisch
 Tara P. Kutnak
 William R. LaPenotiere
 David and Barbara Law
 Thomas Lecklider
 Steven M. Levin
 David R. Levine
 Corey Lilburn
 Lincoln Financial Group
 Live Oak RV Resort
 Fanetta R. Lowdermilk
 Jo Ann Loy
 Eric T. and Jill Lubiner

Carmen Luciano
 LWR Commercial Realty, LLC
 Robert Lytle
 David and Susan Macrae
 Barbara A. MacRitchie
 MagnifyGood
 Vincent and Margaret
 Maisto
 Brian Mannix
 Michael and Kathleen
 Martella
 Susan Martin
 Debbie Mason
 Matthew B. Mayper
 Robert and Beverly
 McClafflin
 McCrory Law Firm
 Thomas A. McEntee
 Bonnie J. McIntyre
 Robert and Sharon McNutt
 Michael Melendez
 Susan F. Milman
 M. Bruce Miner
 Fermin C. and Jodi Miranda
 Timothy Mitten
 John Charlene Moeckel
 Frederick and Molly Moffat
 Granville and Judy Morris
 Charles Morse
 Ellen W. Mosher
 Bill and Mary Muirhead Fund
 Patricia Murray
 Marcia S. Nalebuff
 Barbara K. Nalven
 Charlie and Patti Niccols
 Northside Christian Church
 of Christ
 Susan P. Nye
 Louis and Rosemary
 Oberndorf
 Oberndorf Charities Fund
 Sam and Muffie Ochi
 Timothy and Nancy Olson
 Alexandria Openchowski
 Palm Aire Country Club
 at Sarasota
 Barbara Z. Parker
 Benjamin and Linda Paster

Our Generous Donors

October 1, 2021–September 30, 2022

\$1,000–\$2,499 Donors (continued)

Stephen and Caryn
Patterson
The Patterson Foundation
Leslie Patton
Elizabeth Payne
Philip and Laurie Perkins
Suzanne Perry
John and Deborah Petchul
Pink & Navy Boutique
Sheila A. Plante
Kyle D. Poffenbarger
Sandy Porter
Ellen Posel
Charlotte T. Qua
Connie J. Raguso
Richard and Kimberleigh
Fund
Joseph Richter
Cecille Riggs
Scott T. Ritter
Linda B. Roberts
Donald L. Roettele
Steven and Carolyn
Roskamp
Wendy Rossiter
Kevin Ruben
David and Adrienne Rubin
David T. Rusch
Thomas Johnson and
Sheri Russell
Burton “Skip” and Gail Sack
Sack Family Foundation
SageView Advisory Group, Inc.
SahanDaywi Foundation –
Substation 1
Andrew Salgado
Sarasota Memorial
Healthcare Foundation

Sarasota Memorial Health
Care System
Robert and Barb Schaal
James Schaeffer
Lawrence E. Schafer
John and Priscilla Schlegel
Josephine Schroeder
Schroeder–Manatee Ranch, Inc.
Schwab Charitable Fund
Sam Sciturro
William and Kathy Seider
Joseph and Jaye Semrod
Semrod Family Private
Foundation
Sharon & Russell Stephens
Donor Advised Fund
Elaine Shea
Shumaker, Loop & Kendrick, LLP
Stephanie Sifrit
William and Amanda Simmons
Sarah J. Singer
Eileen Singletary
Kay Skinner
Small Craft Advisory Fund
Elizabeth D. Smith
Peter Smith
Theodore and Carol Smith
Mercedes Smith
Lynne C. Smith
Rise’ Snider Loshawk
Clarence Socia
Socia Foundation Inc.
Bob and Kim Specht
James R. Spencer
Gretchen L. Speranza
Stephen and Lucia Spotte
Philip and Reda St. John
St. John Spirit of Kindness
Fund of the Manatee
Community Foundation
Joan M. Stancil

Renee G. Stevens
Jessica H. Stevenson
Robert and Frances Storey
Thomas T. and Cynthia
A. Stuhley
Sara Stutzman
P. C. Sundareswaran
Tandem Construction
Gregory T. Taylor
Bonnie Taylor–Lynch
Wayne Thomas
Donald L. Thompson
Marlyn Thornton
Catherine C. Tiemeyer
Together We Give Giving
Circle Fund
Ralph and Sheri Trine
Wayne and Mary Gayle
Underhill
Richard T. Van Alen
Robert G. Van Zandt
David and Monica Verinder
David S. Vershel
Brian Volner
Bonita J. Walker
Jeri Walsh
Audrey L. Walther
WBRC Architects–Engineers
Joanne J. Webster
Charles and Wendy Weiss
Judith C. Werner
Barbara S. Wesling
Barbara L. Whitcraft
J. Michael and Barbara
White

Foundation Supporters and Grantors

Atlanta Braves Foundation
Bernard and Mildred Doyle
Charitable Trust
Boca CARES
The Community Foundation of
Sarasota County, Inc.
Donors of Distinction
Edward and Elyse Rogers
Family Foundation
Eluned and Edward Russell
Charitable Foundation
Gulf Coast Community
Foundation
J. Milton & Nellie E. Hoffa
Memorial Foundation
KBR Foundation, Inc.
Lakewood Ranch
Community Fund
The Margaret McCartney &
R. Parks Williams Foundation
The McCune Family Foundation
National Alliance for
Grieving Children - Brave
of Heart Fund
The Patterson Foundation
The Ralph S. French Charitable
Foundation
Regmark Foundation, Inc.
The Robert G. and Ellen S.
Gutenstein Family Foundation
Rotary Club of Lakewood
Ranch, Inc.
Sisterhood For Good
Suncoast Credit Union
Foundation
Wilson-Wood Foundation, Inc.

Legacy Society

Anonymous (13)
Janette S. Albrecht, M.D.
Francine Alexander
Susan Arndt
Nina Arzberger
Linda Bakonyi
Tom and Marie Belcher
Larry W. Benson and Jerry D.
Waterman Family Trust

David H. Bettenga
Hwa C. Beyer
John Bodenburg and
Nancy Helmer
Robert Bole
Rosalind Brack
Theodore M. Brenkacz
Christy Buckley-Currie
Patricia J. Case
George and Joyce Chase
Diane Chechik-Temple
Claudia S. Christensen
Joseph Cincotta
R. Todd Craig and
Ronald G. Winters
Joel S. Cuba and Sandra B.
Cuba Charitable Fund
Antonette M. Cunningham
Robert Davies, Jr.
Jan and Bill Davis
Neena Derf
Caroline and Anthony
DeSantis
Howard and Ann Drazic
Wyn Entis
Gerda Fife
William Geller
Thomas E. Gerrity
Cheryl and Tom Gibbons
Jack F. Greer
Bev & Brad Hahn
Roslyn P. Haney
Linda A. Heg
Adrienne Johnson
Sheryl and James Kaiser
John J. Kestly
Jerry and Sondra Kuskin
Carole E. Landon
Michael Lefrois
Barbara J. Lupoff
Dr. Barbara Maier
Joan S. and John D. Marsh
Debbie Mason
Demir and Gamache Family
Jan Miller
John and Charlene
Moeckel

Sue Lehmer Morey
John and Marianne
Moyer
Pamela Naff
Alexander Nichols
Mrs. Anne Ouchark and
Mr. William F. Ouchark
Dr. Terry L. Palls
Gretchen Phelan
Deborah Poff and
Valarie Clark
Lauri C. Pollack
Polly Pond
Karen Price
Gerry Radford
Marta D. Rapoport
James R. Roorda
Steven D. Roskamp
Joseph R. Rowen
Bob and Linda Shea
Eva T. Slane
Dr. Marlene A. Spencer
Dirk Stark in Memory of
Barbara Stark
Stanley P. Stephenson
Mary A. Szydlowski
Robert L. Taflinger
Susan P. Thomas
David F. and Nancy O.
Thomson Trust
R. T. Van Alen
Grant and Kathy
Verderpool
Helen L. Vetter
David Voelker
Paula J. Whiting-Self
Kenneth and Rosemarie
Williams
Edith I. Winston
Debbie Wohlers
Barbara G. Zdziarski
David and Peggy
Zimmerman



Ways to Give and Donation Plans

Planned Giving and Legacy Giving.

Generosity comes in many forms. Donors have helped Tidewell create and sustain a legacy of world-class care for more than 40 years. Planned giving ensures that you support what is most meaningful to you and your family, at a time that is right for you.

Tidewell Foundation's Legacy Society recognizes the generosity of patrons in our planned giving program. Those who share our commitment to end-of-life care in our community may be interested in making a gift through their estate and financial planning.

When you leave a planned gift to Tidewell Foundation, you leave a legacy that will touch the lives of many others. A planned gift provides tax benefits to you now and helps sustain the mission of Tidewell Hospice to provide care, comfort, and compassion to all, well into the future.

Make a Gift at Anytime

You can help brighten the lives of families in need with a donation today. Your support of Tidewell Foundation allows us to build a future where world-class full-life care is accessible to all. Learn all the ways you can give or donate online at TidewellFoundation.org

1 Vehicle Donation

Your unwanted car, truck, trailer, boat, RV, or motorcycle can help Tidewell Hospice patients. The Tidewell Foundation will arrange for the vehicle to be picked up and sold at auction, and you receive a tax receipt.

2 Receive Life Payments for a Donation Made Now

Creating a Charitable Gift Annuity, Charitable Remainder Trust, or Charitable Remainder Annuity Trust provides a donation to the Tidewell Foundation that pays you income for life while minimizing your income tax.

3 Donate Highly Appreciated Stock and Avoid Paying Capital Gains Tax

By donating highly appreciated securities owned for a year or more to Tidewell Foundation, you receive a tax deduction and eliminate your capital gains tax. The securities must be transferred to Tidewell Foundation instead of being sold by you.

4 Give From Your IRA at Age 70½

If you are 70½ or older, you can make a qualified charitable deduction (QCD) from your IRA directly to the Tidewell Foundation up to \$100,000. You will be gifting pre-tax dollars and avoid income tax, because it goes straight to a charity.

5 Gift Your Life Insurance

Various methods exist for making life insurance donations; each method has unique advantages. One option is to simply name Tidewell Foundation as a full or partial beneficiary of your life insurance policy.



“

After my wife of 65 years died in hospice care, just three months after we lost our son in a motorcycle accident, a friend invited me as a guest to a Tidewell Foundation donor appreciation luncheon. It was there I learned everything Tidewell Hospice offers to our community and where I found caring and compassion for my own grief. So many can benefit from their care. Tidewell is a perfect charity for annual donation, plus I shall leave them a charitable donation in my will.”

”

~Dave Thomson



**One relationship at a time,
we strengthen our community.**

**One patient at a time,
we raise their spirits.**

**One family at a time,
we lighten the load.**

**One person at a time,
we care for all.**



empath
TIDEWELL FOUNDATION

Delesa Morris, MS, CFRE, Interim President

Sean Allison, Philanthropy Advisor

Jennifer Bernthal, Creative Services Manager

Lisa Brosky, Director of Communications

Lorraine Constantino, Administrative Manager

Michelle Forbis, Assistant Manager — Tidewell Treasures Venice

Eugenia Gainers, M.Ed., PMP, Grants & Program Manager

Shannon Johnson, Special Events Manager

Debbie Kenny, Manager — Tidewell Treasures Venice

Diane Liuzzo, Assistant Manager — Tidewell Treasures Sarasota

Chris Pfahler, RN, BSN, CFRE, Senior Philanthropy Advisor

Larry Richards, Philanthropy Data Specialist

Carrie Smith, Assistant Manager — Tidewell Treasures Venice

Nicole Taylor, Philanthropy Advisor for Data Management

Megan Wenger, CFRE, Senior Philanthropy Advisor

Jamie White, Manager — Tidewell Treasures Sarasota



Tidewell Foundation is grateful to our sustaining annual corporate partners for their ongoing sponsorship of the Foundation's work.

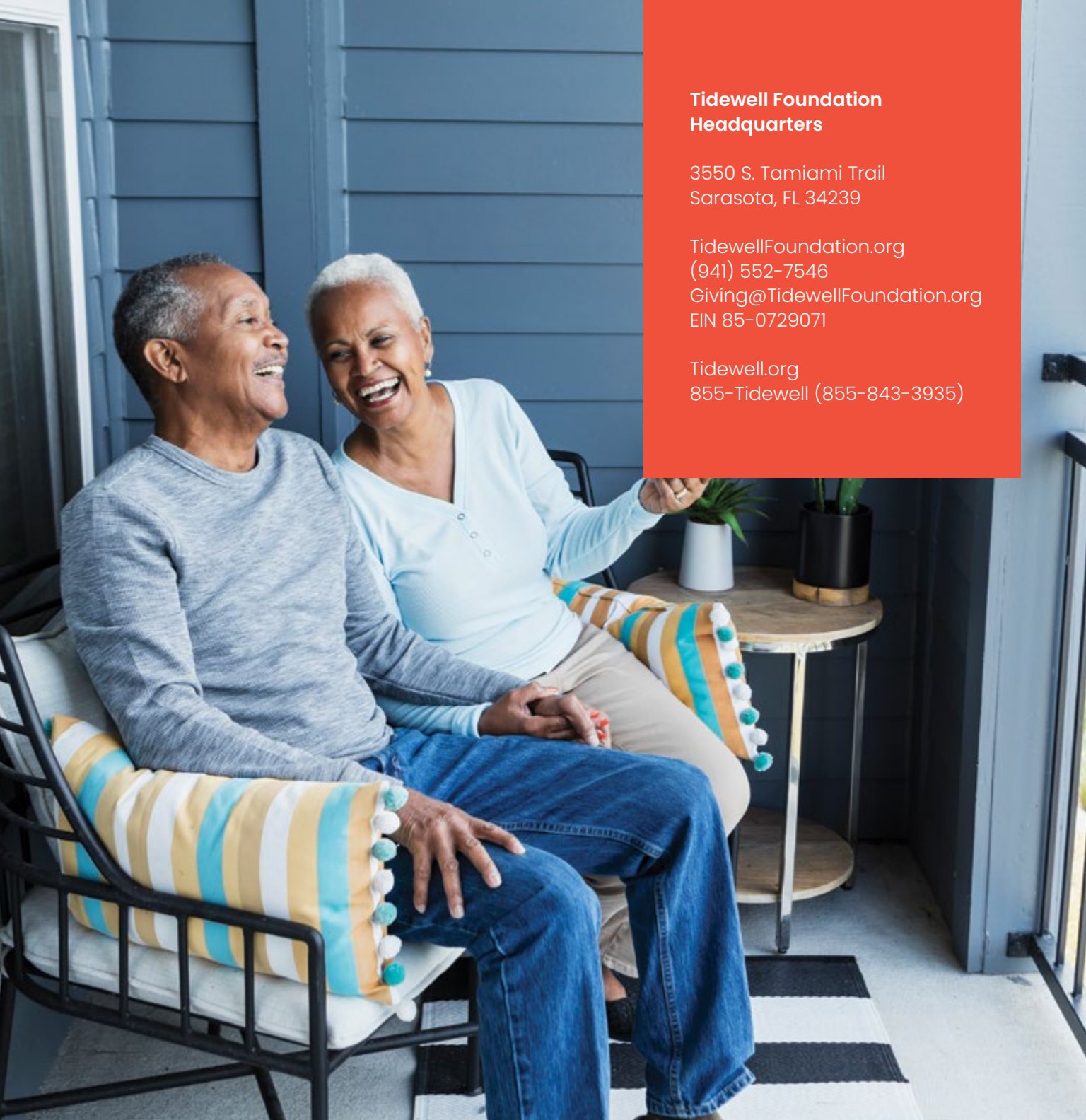
Sustaining Annual Corporate Partners

Partners in Excellence



Partners in Compassion





**Tidewell Foundation
Headquarters**

3550 S. Tamiami Trail
Sarasota, FL 34239

TidewellFoundation.org
(941) 552-7546
Giving@TidewellFoundation.org
EIN 85-0729071

Tidewell.org
855-Tidewell (855-843-3935)

The Tidewell Foundation, Inc. is a registered 501(c)(3) non-profit corporation. A copy of the official registration and financial information may be obtained from the division of consumer services, by calling toll-free 1-800-435-7352 (or 1-800-352-9832 en español) or going on the department's website www.FloridaConsumerHelp.com.

Registration does not imply endorsement, approval, or recommendation by the state. One hundred percent (100%) of the donation is received by the Tidewell Foundation, Inc. Charitable Solicitation Registration #CH63240 TF-031423-1158