



live

# brighter

 **empath**  
**TIDEWELL**  
**FOUNDATION**

 **empath**  
**TIDEWELL**  
**HOSPICE**

## Community Impact Report

Fiscal Year 2022

# Dear Friends and Supporters

---

Tidewell Foundation exists to provide perpetual philanthropic support to Tidewell Hospice and portions of the Empath Health integrated network of care. Our mission is to brighten lives in our community by advancing care and compassion for all those who need it.

Now entering our third year as a foundation, donations continue to grow, allowing us to meet our commitment to support hospice, home health, grief counseling and unique therapeutic services in our region.

Further, donors have joined us in deepening our commitment to the community through special programs such as our annual Linens and Love and Thanksgiving Meal drives.

We are truly grateful to each donor, foundation, association, civic group and volunteer for your trust and investment in Tidewell. You are the ones who help ensure that all who need the world-class care of Tidewell Hospice receive it. You help ensure that our community commitment to one another in times of need is possible.

Please enjoy reading this report. It is the story of care, kindness and compassion.



A handwritten signature in black ink that reads "Jonathan D. Fleece".

Jonathan Fleece, Esq.  
President and CEO Empath Health  
and Affiliate Programs



A handwritten signature in black ink that reads "Delesa Morris".

Delesa Morris, M.S. CFRE  
Interim President, Tidewell Foundation



Care  
Kindness  
Compassion



Tidewell Foundation provides philanthropic support to Tidewell Hospice and the not-for-profit Empath Health affiliate organizations in Sarasota, Manatee, Charlotte, DeSoto, Lee, and Collier counties. Charitable contributions to the Tidewell Foundation sustain and grow the critically important programs provided in these areas.

# Board of Trustees

October 1, 2022 – September 30, 2023



Judith Berlow  
Board Member



Dan Deemes, MD, PhD  
Board Member



Renee Eppard  
Board Chair



Steve Hall  
Treasurer



Dean Hautamaki,  
MD, FCCP, FACP  
Board Member



Victoria Kasdan,  
RN, BSN, MPH  
Board Member



Steve Krause  
Board Member



Kory D. Lee, CFP  
Board Member



Jan Miller  
Board Member



Tom Stuhley  
Vice-Chair



Jason Toale  
Secretary



Delesa Morris, M.S., CFRE  
Interim President  
Tidewell Foundation



Jonathan Fleece, Esq  
President and CEO  
Empath Health





**Board of Trustees**

October 1, 2022 – September 30, 2023

**Officers:**

Matthew Mayer Chair  
Mindy Ryals Vice Chair  
Kimberlie Buchanan  
Treasurer  
Dan Deems, MD, PhD  
Secretary

**Trustees:**

Kwame Alexander  
James Fiorica, MD  
Karen Fordham  
Robert "Bob"  
Hillstrom, MD  
Kevin P. Logan  
Marge Maisto  
Fermin "JJ" Miranda  
Jake Sorg



**Board of Trustees**

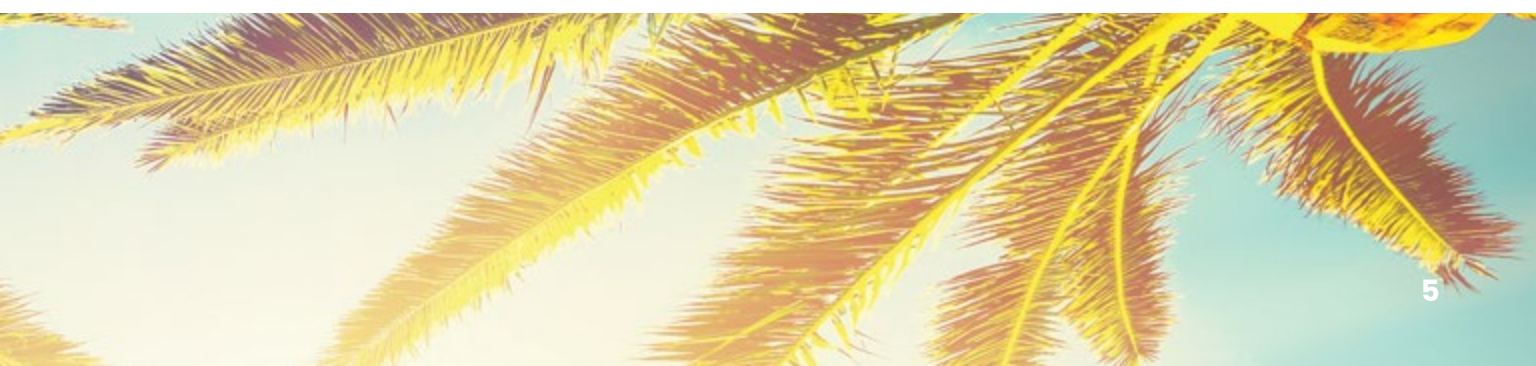
October 1, 2022 – September 30, 2023

**Officers:**

Tom Stuhley Chair  
Ben Hayes Vice Chair  
Chad Whetstone  
Treasurer  
Jan Miller Secretary

**Trustees:**

Linda de Mello  
Deborah Nicklaus  
Linda Plaster  
Michael "Mike" R. Uselton



The Empath Health Integrated Network of Care

# Unified in Empathy

## Serving Southwest Florida

Founded as **Suncoast** (1977) and **Tidewell** (1980), these pioneering hospice organizations came together under the Empath Health family of care in March 2021. This created the country's largest non-profit hospice and home care-based health organization.

**Tidewell Hospice** and the **Tidewell Foundation** operate as independent not-for-profit affiliates with a focus of operations and fundraising support in Charlotte, DeSoto, Manatee, and Sarasota counties. Tidewell plays a fundamental role in Empath's dedication to Full Life Care.

Jonathan Fleece, Esq., formerly Tidewell Hospice President and CEO, took full leadership of Empath Health and Affiliate Programs in January 2023, from now retired CEO, Rafael Sciuлло.

“

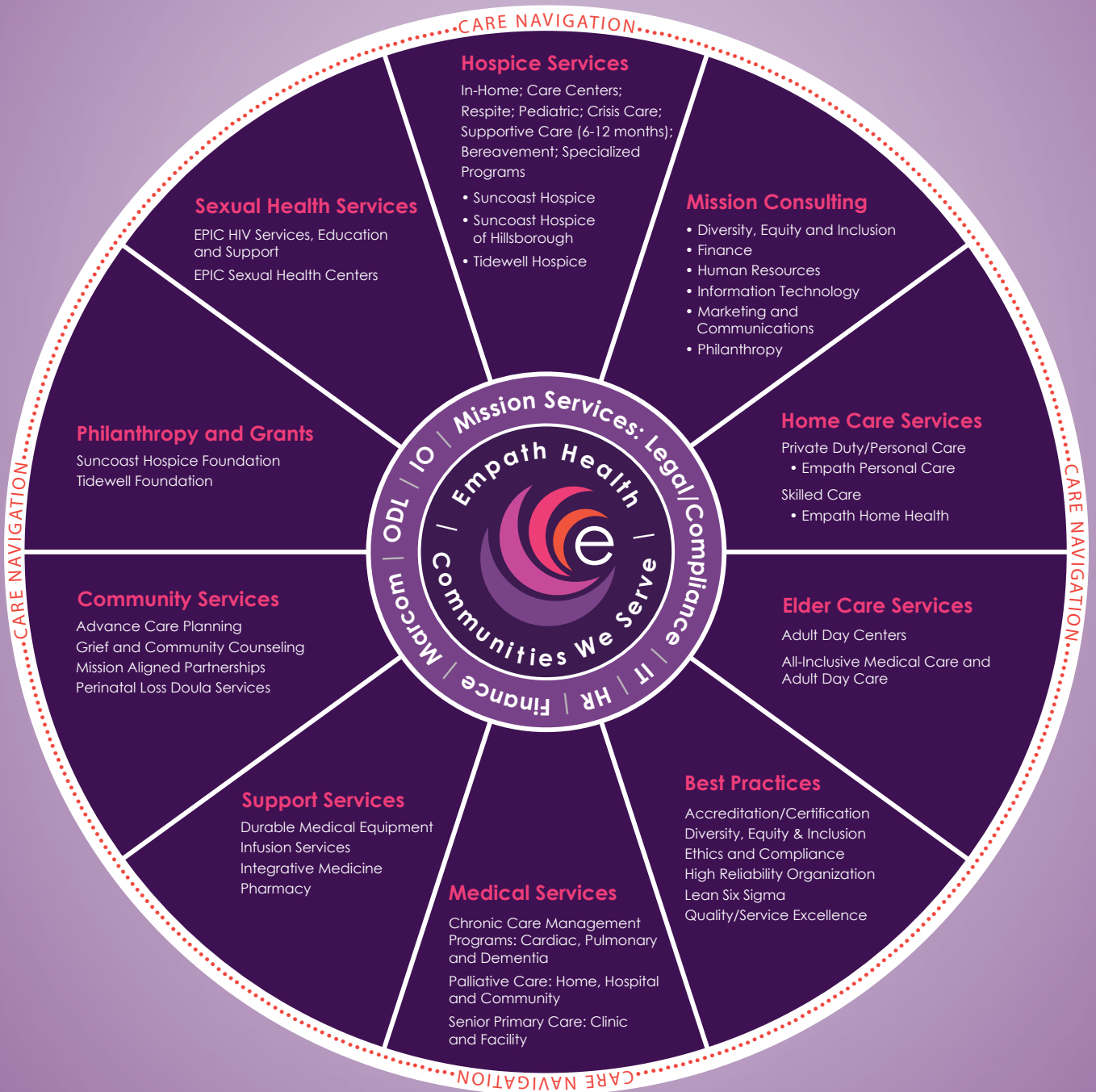
Donors can remain assured of Tidewell Foundation's never-ending commitment to supporting hospice care, complemented by Empath's growing new services in our region, including home health, palliative care, and elder care.

”

**Jonathan Fleece, Esq.**  
Empath Health President and CEO



# Empath Health Wheel of Access



# Supporting Innovative Programs for Full Life Care

---

**Empath Health's commitment to "Full Life Care," drives innovation for programs that help people at all stages of care and all dimensions of their well-being.**

## **Reiki Therapy**

Human touch has long been known to have psychological benefits. Emotionally, massage is calming and can be a distraction from pain and fear.

Tidewell incorporates Reiki Therapy into its complementary therapy programs. It is performed by trained volunteers who provide comfort through this light touch or hands off energy healing modality.

It is based on the belief that energy can stagnate in the body where there has been physical injury or emotional pain. Reiki practitioners say improving the flow of energy helps with relaxation, pain relief, healing and lessening of symptoms.

## **Medical and Palliative Care**

Palliative care, sometimes referred to as "comfort care," is specialized medical care and support for patients living with a serious or life-limiting illness. The focus is to relieve pain, symptoms and stress at any time during a serious illness and to support patients and families as they work through difficult medical decisions.

Palliative care helps provide relief from symptoms, can help manage the side effects of medical treatments, and improves quality of life for patients and families. While a patient does not have to be under hospice care, palliative care is part of the hospice approach to end-of-life care.







### **Technology**

Tidewell led the way in using technology to create meaningful connections for hospice and home health patients during the COVID-19 pandemic. Donors supported the purchase of iPads and virtual reality headsets. The iPads created a way for isolated patients to safely connect with families, friends and caregivers and still play an important role in connecting patients with family members far away.

Virtual Reality gives patients a powerful way to experience the world, while at home or a hospice house. Technology helps broaden the world for people in Tidewell and Empath's care.

### **End-of-Life Doula**

Tidewell's End-of-Life Doula program pairs trained volunteers with individuals in hospice care to help the patient in care add intention and purpose to their final journey. Doulas often help patients create a legacy project for those left behind. They also provide guidance about circumstances surrounding death, such as where, who is there, and what's in the room. Doulas also sit vigil and help guide patients through pain and uncertainty.

More important, a doula becomes a dying patient's voice and advocate, helping to ensure that their intentions and wishes are met.

# Tidewell Hospice By The Numbers

---

The Tidewell Foundation supports innovative Tidewell and Empath Health programming for this region.



**11,033**

Patients Served



**\$0.90**

of Every Dollar Going to Direct Patient Care



**717**

Total Number of Employees



**29**

Volunteers Equal To Full Time Employees



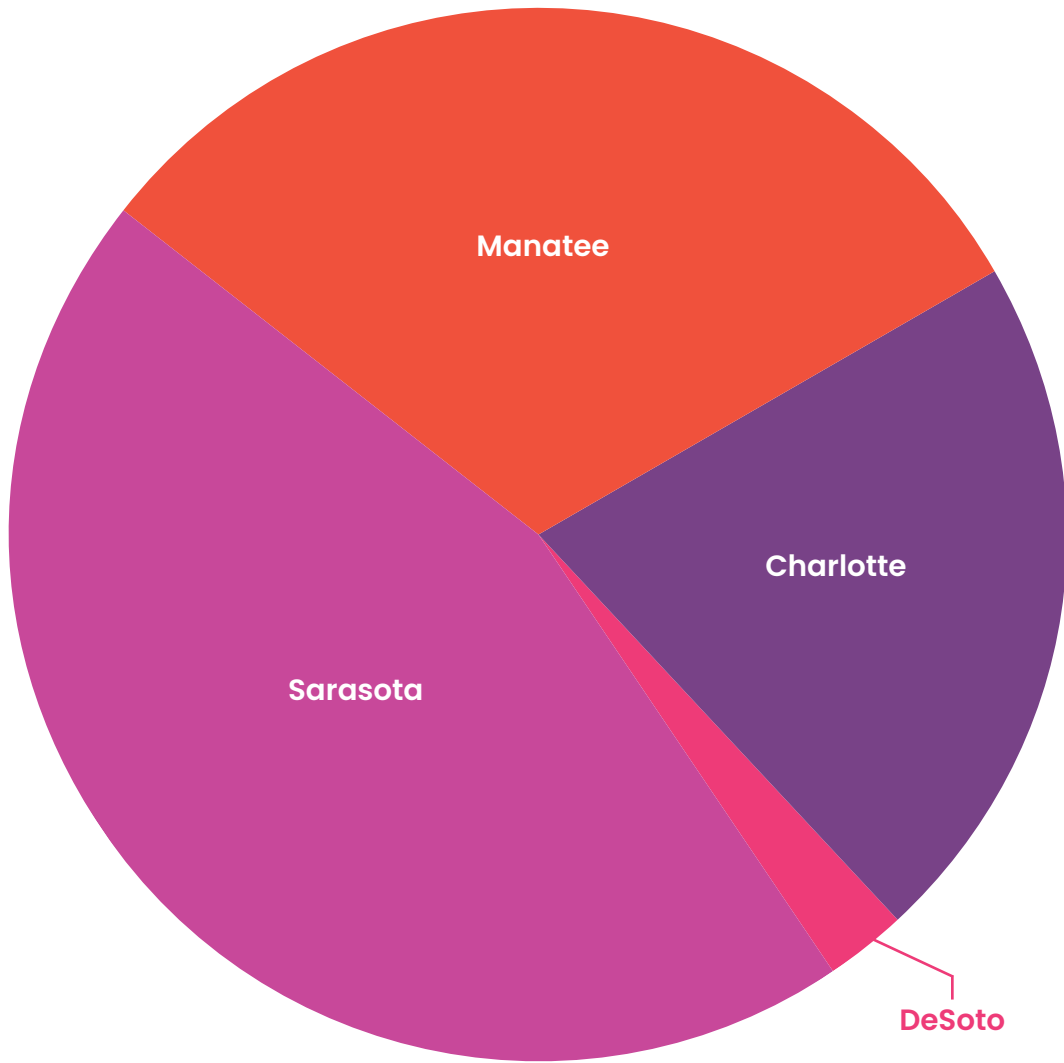
**\$1,337,958.80**

Value of Time Donated by Volunteers



**61,099**

Volunteer Hours Logged



### Patients Served by County



### Licensing and Accreditation

- Florida State**  
**ACHA**  
Licensed
- CHAP**  
Accredited with  
deemed status
- Medicare  
and Medicaid**  
Certified
- The National Institute  
for Jewish Hospice**  
Accredited



## Tidewell Foundation

# Our Mission

---

Brighten the lives of patients, families and residents of communities served by Tidewell Hospice and not-for-profit affiliates of Empath Health by increasing awareness, funds, engagement, and advocacy to sustain and expand the exceptional programs and services offered.



# A Story of Moments

---

When Tidewell Foundation tells its story, it's often about moments. Moments of connection. Moments of compassion. Moments that create warm memories.

- The respite care provided by a volunteer that allows a wife to shop for groceries.
- Time in the warm sunshine provided by a swing given to a 12-year-old boy.
- The touch of a loved one's hand in a couple's final hour together.
- The comfort of a hospital bed with new, clean linens.
- The relief provided by a care team at just the right time.
- The feeling of happiness returning through the help of grief services.

When we talk about brightening lives and lifting families, it is about creating connections, building relationships, and allowing for moments that matter at difficult times.

**Our story is driven by compassion.**  
**We care for those who need it most.**



# Community Impact



**\$1M**

Free  
Charitable Care



**\$54,607**

Tidewell Honors  
Veterans program



**\$738,340**

Nurse Residency and  
Home Health Aide  
programs



**\$1.6M**

Community Grief Center  
and Grief Education  
Support Services



**\$304,470**

Cardiac Care  
program



**\$794,596**

Tidewell  
Blue Butterfly  
program



**\$501,815**

Complementary  
Services



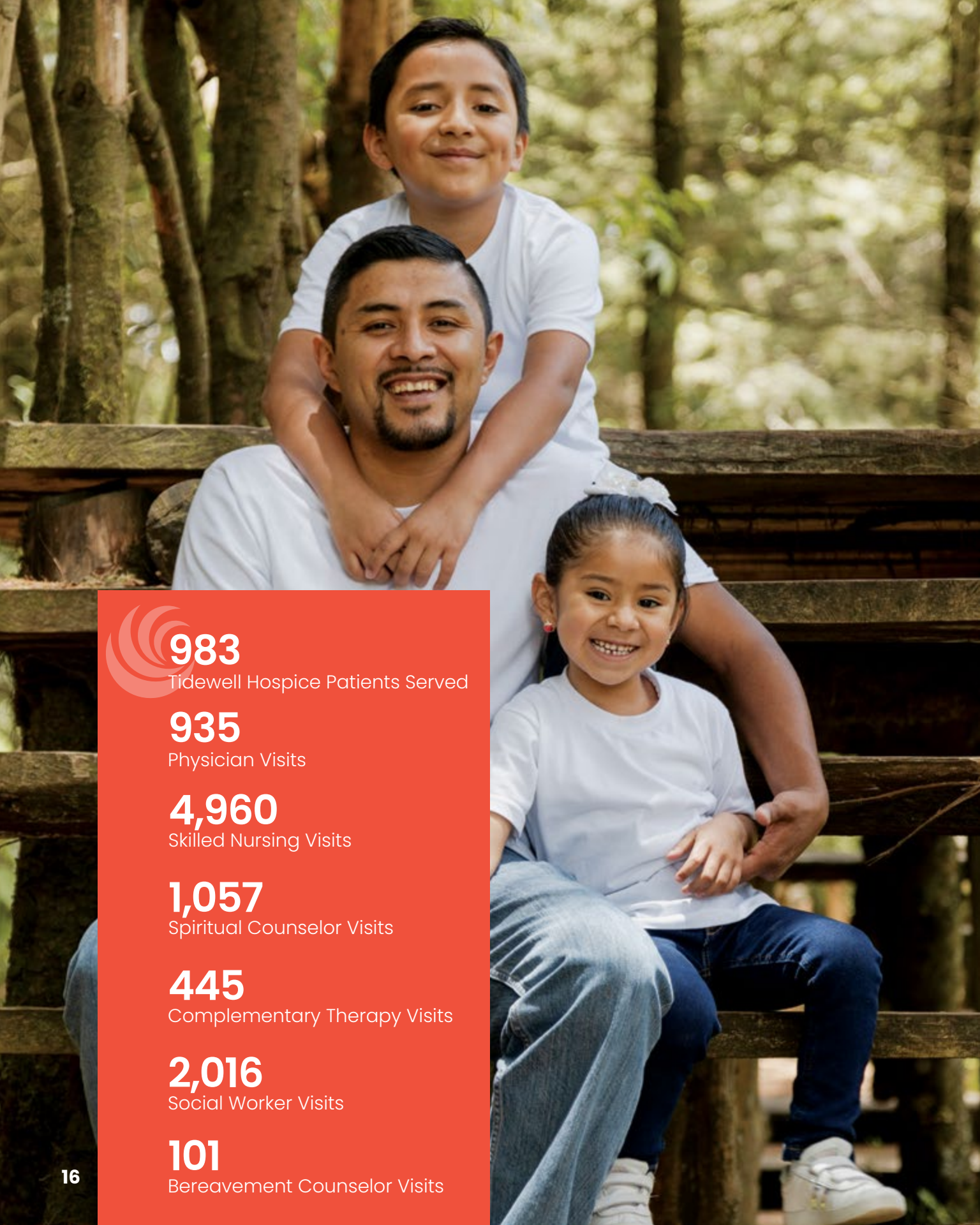
**\$90,000**

in Humanitarian  
and Wishes Fund  
fulfillments



**\$66,000**

Pediatric  
Hospice Care



**983**

Tidewell Hospice Patients Served

**935**

Physician Visits

**4,960**

Skilled Nursing Visits

**1,057**

Spiritual Counselor Visits

**445**

Complementary Therapy Visits

**2,016**

Social Worker Visits

**101**

Bereavement Counselor Visits



# Care for All

---

## Providing world-class care regardless of ability to pay.

### What we do

Thanks to our donors, Tidewell Foundation provides support for patients and families in our area, regardless of their ability to pay.

- Hospice services that are not reimbursed through Medicare, Medicaid or insurance may be covered through donor support.
- The Foundation ensures all patients receive quality medical care, equipment, and counseling.
- Tidewell Foundation and Tidewell Hospice combine to provide \$2 million in care to those in need.\*

### Your donations at work

- The single mother who lost her insurance when she became too ill to work received full services of hospice care.
- The spouse of a once fully independent person also had to stop working to provide 24/7 care. The Humanitarian Fund helped with rent until the spouse could make stable living arrangements.
- A family was able to benefit from hospice care for their child, despite insurance that didn't cover pediatric hospice care.

**We help people who may be too sick to work, or those without insurance or Medicare but need treatment for serious conditions.**

### Why your support matters

Without donor support, hundreds in our community in need of the care and compassion of Tidewell Hospice would not receive it. Tidewell believes that all in need of care at this most difficult time should receive it.

*\*The total amount for charitable hospice care includes contributions by both not-for-profit Tidewell Hospice and the Tidewell Foundation.*



# Grief Support

---

**With your donations, Tidewell Foundation supports Empath Health Grief Care in its free services to families and community members who have experienced the death of a loved one.**

## **What We Do**

Empath Health Grief Care is the largest provider of free grief counseling programs in our four-county service area. These free services are available even if your loved one was not a Tidewell patient.

## **Your Donations at Work**

- In FY 2022, Tidewell provided 9,342 free grief support sessions thanks to grants from the Tidewell Foundation.
- Tidewell Grief Care also works with first responders when tragedies occur.
- Clients are supported in group sessions and individually as needed.

## **Why Your Support Matters**

The need is continuous, and there is a waiting list of people who need Tidewell's help. Donations will allow us to expand our services.

**9,342**

Adult grief support sessions

**1,722**

Individuals served

**336**

Individuals served by Empath  
Tidewell Blue Butterfly



Fleece family,  
Labyrinth Garden

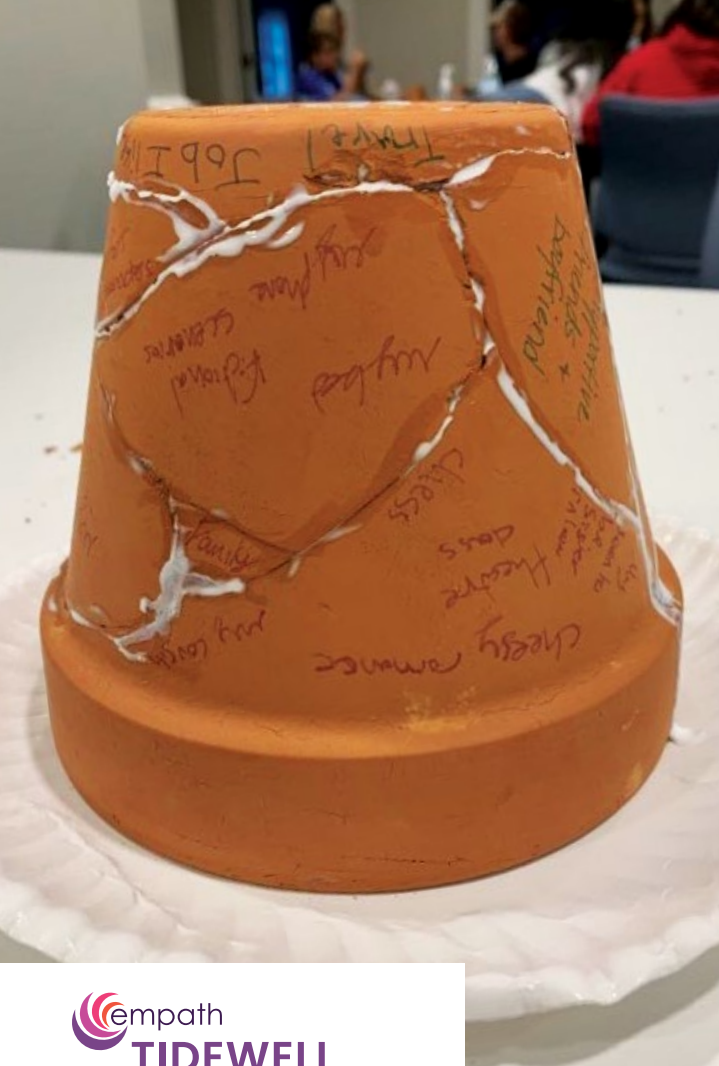
## Labyrinth Garden Grows Hope

Upon arriving at the **Tidewell Family Grief Center** in Ellenton, loved ones are embraced by beauty and solace and welcomed toward hope and healing.

Today, individuals and families can stroll through a labyrinth garden, catalyzed by a \$25,000 gift from **Jonathan Fleece**, President and CEO of Empath Health and affiliate programs, and his wife, Amy, in honor of Amy's mother who died when she and her brother were teenagers.

"We look forward to watching the labyrinth garden grow, bloom, and blossom so that families will have a place to transition from feeling 'lost' to 'found' along their journeys," said the Fleecees.

The Tidewell Family Grief Center in Ellenton was made possible through a \$1.1 million capital grant from Tidewell Foundation, including a lead gift from the Eppard Family Foundation. All the services and programs offered through the Center are free thanks to the generosity of donors to Tidewell Foundation.



# Empath Tidewell Blue Butterfly Children's Grief Care

**The Blue Butterfly program supports grieving children and teens after the death of a significant person in their lives.**

### What We Do

Evidence-based therapy helps children avoid adverse responses to grief and gives them the chance to connect with others who have also experienced loss.

Blue Butterfly groups are facilitated by mental health professionals and trained volunteers. Families may enroll in Blue Butterfly regardless of when the death occurred or if their loved one was a patient of Tidewell Hospice.



**354**

Children

**599**

Individuals served

**248**

Caregivers

### Your Support at Work

The Blue Butterfly team introduced the broken pot activity to its clients. The activity symbolizes the healing and rebuilding of a family after the loss of a loved one. The families did a great job working together to break and rebuild their pots.





### Your Donations at Work

Blue Butterfly provides services in Ellenton, Lakewood Ranch, Port Charlotte, and the Newtown community of North Sarasota.

Mental health professionals use a variety of developmentally appropriate expressive arts, games, and evidence-based practices. These free services are donor-supported through Tidewell Foundation.

More than 8,000 children in the Sarasota area lose a parent or sibling each year. Generous donors ensure these critical services are available to those suffering to help process and heal their grief.

### Locations

**Tidewell Family Grief Center Ellenton**  
4151 37th St. E.  
Palmetto, FL 34221

**Blue Butterfly Family Grief Center**  
6800 Professional Pkwy. W.  
Lakewood Ranch, FL 34240

**Newtown-Bethlehem Bible Church**  
1680 18th St.  
Sarasota, FL 34234

**Port Charlotte-Lighthouse Baptist Church**  
14251 Chancellor Blvd.  
Port Charlotte, FL 33953



# Complementary Services

**Clinically proven enhanced programs bring quality of life to those with advanced illness.**

Tidewell's wide-ranging suite of complementary services support conventional treatments by helping to relieve pain and anxiety and promote a greater sense of well-being.

- A talented cook is brought herbs to smell as a sensory prompt to happy memories.
- A Certified Music Therapist plays old favorites as patients sing along or tap their feet.
- Creating art helps a patient forget her pain for a while and focus on something enjoyable.

Tidewell's complementary therapies are designed to bring spiritual and emotional comfort that medicine alone cannot supply.

## Why Your Support Matters

Insurance does not cover complementary services. We are able to provide them only with donor support.

Music Therapy

5,029

Visits

1,325

Patients Served

Massage Therapy

1,667

Visits

337

Patients Served

512

Pet Therapy  
Visits

305

Reiki Therapy  
Sessions

46

Other (clown and other)



Jasmine Ridge  
Signature Luncheon 2022

**Certified Music Therapist Jasmine Ridge** recalls meeting with a couple who had been married for 74 years, having met 80 years before. They decided on a legacy project: A song based on their lives. After some conversation, and Jasmine witnessing how much in love they were, she incorporated facts about their lives and penned their song: “A Little More in Love with You.” Hear the song at [TidewellFoundation.org](https://www.TidewellFoundation.org) under “Video Gallery.”

### **Expressive Arts**

Pairing patients with professional artists or musicians, Tidewell’s industry-leading Expressive Arts program helps direct patients focus away from pain—all without side effects.

### **Reiki Therapy**

Reiki is an energy healing technique demonstrated to create feelings of peace, relaxation and security. Trained practitioners use gentle touch to help improve flow and balance of energy.

### **Pet Therapy**

More than 100 certified pet therapists are on call and ready to provide unconditional affection. Each Pet Therapy volunteer and animal are specially trained in hospice pet visitations.

### **Massage Therapy**

Therapeutic massage is clinically proven to help reduce pain and stress. Licensed Massage therapists support patients as partners in their care.





# Workforce Development

---

## Recruiting, training and supporting a dedicated workforce.

### Nurse Residency

The healthcare industry is facing a nationwide nursing crisis. Nursing education programs do not typically include training in end-of-life care. Tidewell provides mentoring, structured education and training for nine months, and financial support to newly licensed nurses learning hospice philosophy and end-of-life care.

Tidewell's hospice-specific Nurse Residency Program provides recent nursing graduates with the opportunity to immerse themselves in the hospice field. This field often requires prior years of experience in other clinical settings.

### Home Health Aide Training

Launched with a \$100,000 grant from Bank of America to the Tidewell Foundation, the Home Health Aide Training program continues to train nurses and home health aides in the hospice specialty. Candidates receive paid training and a career ladder in the program as they move from home health aide, to CNA, LPN, RN, and more.

### Why Your Support Matters

Managing the nurse shortage requires innovative training programs. Donor support is an investment in the future of hospice and home health care.

**Jennifer Gross, RN, BSN, CHPN**, was an accountant when she was introduced to Tidewell Hospice through her daughter's interest in volunteering in pet therapy. It didn't take long before Jennifer had realized her career ambition. She would be a hospice nurse. After completing nursing school, she was able to fast-track her way to her goal by participating in the Nurse Residency Program. She now is a respected member of the Tidewell Hospice team.





# Tidewell Honors Veterans

---

**Providing tailored services and respectfully celebrating their needs.**

## **What We Do**

Tidewell Honors Veterans is a comprehensive program focused on respectfully celebrating veterans and providing care that recognizes the unique challenges that may exist in military families. Tidewell's care teams have specific training to identify the unique needs of military veterans.

We provide care for veterans' families with specific support groups that allow loved ones and caregivers to share their experiences in a safe environment, and to connect with others with similar circumstances.

Tidewell Honors Veterans has a Level 5 Certification, the highest available, from We Honor Veterans, a national organization focused on meeting the unique needs of veterans in hospice care. Tidewell serves as a mentor to other hospice programs seeking the certifications.

**1,079**  
Veterans Served

**482**  
Veteran Pinning  
Ceremonies



Upon request, Tidewell Hospice is proud to offer a unique pinning ceremony for veterans.

Veterans receive a special certificate of appreciation and a unique Tidewell Honors pin, which is presented by a fellow former serviceman or woman specially trained as a Tidewell veteran volunteer. The ceremony is a moving recognition of veterans' service and sacrifice.

### **The Need is Great**

Tidewell Honors Veterans serves about 175 veterans a day and is 100 percent funded by donors. Without donor and volunteer support, the program could not exist.





A visit to Mote Marine Laboratory and Aquarium restored fond memories for Francisco, 64, and brought a cherished special day for the former deep-sea fisherman and his partner, Tanya.

“He tells me ‘Don’t cry.’ Today’s a good day,” Tanya said.

# Tidewell Wishes and Humanitarian Funds

## Fulfilling wishes of patients to brighten their final days.

### What We Do

The Wishes Fund fulfills end-of-life wishes, such as celebrating a birthday or anniversary, family outings, travel assistance for family member visits, and tickets to special events. It helps patients and their loved ones make the most of their time together.

The Humanitarian Fund grants emergency, non-medical financial relief for patients, such as rent assistance, providing groceries or utility bill payments, and connecting families to long-term support through nonprofit partner organizations. It alleviates the burden on a patient's family, who might have lost a source of income, and allows them to focus on their loved one's medical care.

### Your Donations at Work

- Dawn Marie of Bradenton had a reputation for doing things for others but asking nothing for herself. Now without family, she finally accepted a wish for dinner overlooking the gulf. She was joined by a friend on what had been an overcast day; just before sunset, the clouds cleared for a spectacular sunset.
- After her health declined rapidly, a 78-year-old Port Charlotte woman was moved from her home to a Tidewell Hospice House for care. Her husband lived in a senior center nearby but had no way to be at this wife's side at this crucial time. Tidewell Foundation covered the cost of a medical transport, and the couple were reunited one last time.

### Why Your Support Matters

The Tidewell Wishes Fund and the Humanitarian Fund are 100 percent funded by donations. These additional services are never covered by traditional payment methods, so we rely on community support. Donations help patients and their families create joyful memories and ensures we can grant last wishes for years to come.

96

Patients Served Through the Humanitarian Fund

50

Patients Served Through the Wishes Fund



# Tidewell Treasures

**By donating gently used items and shopping at Tidewell Treasures, you benefit the work of Tidewell Hospice.**

## What We Do

Tidewell Treasures offers gently used, brand-name furniture and clothing, electronics, collectibles, books, music, jewelry, linens, lamps, artwork, and other home goods and accessories.

Proceeds go to the Tidewell Foundation to support Tidewell Hospice's free programs and services.

## Why Your Support Matters

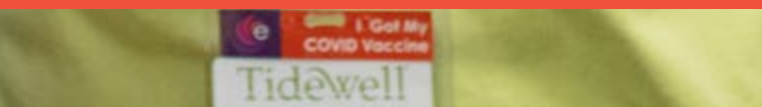
**In FY 2022, Tidewell Treasures stores earned \$989,053 in revenue.** Proceeds from Tidewell Treasures provide significant funding for programs not otherwise covered by insurance.

**210** volunteers

**78** full-time equivalent employees

## Volunteers are Key to Success

Volunteers are the heart of our resale shops. It takes many volunteers per store to keep the shops running at high efficiency. They help in essential ways by greeting shoppers, sorting and pricing items, handling checkout, and supporting the mission.





 **empath**  
**TIDEWELL**  
**TREASURES**

**Sarasota Tidewell Treasures**

5441 Palmer Crossing Circle  
Sarasota, FL 34238  
(941) 552-7555

**Venice Tidewell Treasures**

523 Venice Bypass #41  
Venice, FL 34285  
In the Bird Bay Plaza  
(941) 882-4467

**TidewellTreasures.org**

**Volunteers are lifted by a camaraderie and dedication to the mission.**

**If you would like to volunteer, contact Sue Forbes at (941) 441-2061 or [Sforbes@tidewell.org](mailto:Sforbes@tidewell.org).**







# Hurricane Ian

---

## Thank you from a grateful community.

Amid the tragedy and destruction of Hurricane Ian on September 28, 2022, Tidewell and our greater community saw the best in people.

Tidewell and Empath colleagues continued to support patients during the storm. They secured themselves in the Hospice Houses and Call Centers. When it was deemed safe to be on the road, caregivers began serving patients in person, regardless of the hardships the storm caused in their personal lives. One nurse was left with practically just the clothes on her back and yet left immediately to see patients.

And then came a community outpouring of donations and gifts, which allowed us to help colleagues who needed immediate help to meet basic life needs. A large conference room was filled and emptied of water, canned goods, flashlights, propane, diapers and much more, again and again as supplies were moved to the hardest hit areas.

Cash donations helped supply meals for colleagues and support facility needs.

“We are grateful to so many Empath leaders, colleagues, volunteers, donors and angels who have shown us a bright light of support, hope and caring in the midst of recent dark moments,” said **Jonathan Fleece**, President and CEO, Empath Health and Affiliate Programs, in the days that followed.



# Our Generous Donors

October 1, 2021–September 30, 2022

## 1980 Society

### \$1,000,000+ Donor

Anonymous(1)

## Monarch Society

### \$500,000 – \$999,999 Donors

Estate of John and  
Eleanor Paltsits

## Leaders Circle

### \$250,000 – \$499,999 Donors

Stacy M. Colyer Trust  
Estate of Michael J. Rodney  
Schiffman, Sumiko Admin  
Trust

## President's Circle

### \$100,000 – \$249,999 Donors

Walter and Renee Eppard  
Estate of Arthur B. Schute  
Julia A. and John Osborne

## Advocate Circle

### \$50,000 – \$99,000 Donors

Alice R. Bradley Revocable  
Trust  
Bruce P. O'Neill Estate  
Colleen Y. Wilson Charitable  
Remainder Unitrust  
The Community Foundation  
of Sarasota County, Inc  
Dorcas Life Hunt Estate  
Eleanore L. Lempke  
Charitable Foundation, Inc.  
Estate of Charles Robert Lewis  
Deanna Housfeld  
JW & DJ Pearson Charitable  
Remainder Trust  
The Ralph S. French  
Charitable Foundation  
Shirley Ann Hess Living Trust

## Friend's Circle Donor Society

### \$10,000 – \$49,999 Donors

Anonymous(3)  
Mary E. Albrecht  
Bernard and Mildred Doyle  
Charitable Trust  
The Brave of Heart Fund  
Caldwell Trust Company  
Vincent and Donna Contino  
D Squared Foundation, Inc.  
Davis Family Arts Foundation  
Dignity Memorial  
Donald Abrams and Harriet  
Abrams Revocable Trust  
Elizabeth T. Templeton Charitable  
Remainder Unitrust  
Eluned and Edward Russell  
Charitable Foundation  
The Estate of Iris Carter  
Estate of Marcella E. Deaton  
Eugene A. Reichard  
Revocable Trust  
Joann Flanigan  
Florida Cemetery, Cremation  
& Funeral Association  
Franklin C. Mann Trust  
Letitia Griffin  
Stephen W. Hall  
Walter Haskins Fund In  
Memory of Stacey K. Haskins  
Patricia A. Heffron  
Philip H. Hubbell  
The J. P. Morgan Charitable  
Giving Fund  
Mildred D. John  
The John Family Foundation  
William and Elizabeth  
Johnston

Johnston Family Fund of  
the Manatee Community  
Foundation  
KBR Foundation, Inc.  
John and Catherine  
Kennedy Fund  
Estate of Liselotte A. Krauss  
Marvin A. Yagley Trust  
McCune Family Foundation  
Jan Miller and James Cutler  
Ann L. Morgan  
National Alliance for Grieving  
Children  
National Hospice Regatta  
Alliance, Inc.  
Network for Good  
Norman and Phyllis Siskel  
Donor Advised Fund  
The Northern Trust Company  
Michael I. Pass  
Gary and Marcia Pfleeger  
Radey Law Firm  
Vivian P. Ragsdale  
Regmark Foundation, Inc.  
The Robert G. and Ellen S.  
Gutenstein Family  
Foundation  
Sam R. Rodgers  
Sam S. Dickson Trust  
Marc Seigel  
Phyllis S. Siskel  
James A. Snelgrove  
Suncoast Credit Union  
Foundation  
Trust  
Trust of Patricia Ryan Cowan  
Marilyn B. West  
Alison Williamson  
Wilson-Wood Foundation, Inc.

**Circle of Compassion Society**  
**\$2,500 – \$9,999 Donors**

Anonymous (8)  
43rd Street Church of Christ  
of West Bradenton Fund  
Alfred Rose Foundation  
The Allyn Foundation, Inc.  
Anna Maria Oyster Bar  
Atlanta Braves Foundation  
Robin Bauer  
Mary Ann Beaupre  
Tom and Marie Belcher  
The Benevity Community  
Impact Fund  
Judith T. Berlow  
Patricia J. Bertram  
Blalock Walters, P.A.  
J. Michael Bossert  
Scott and Patrice Brickman  
Semmes L. Brightman  
The Honorable Vernon and  
Sandra Buchanan  
Richard and Amy Buck  
William Burnside  
William C. Campbell  
Ann Campion  
Carl W. and Elaine P.  
Meyer Fund  
CoolToday  
Robert E. Copeland  
David Crawford  
Randal and Jessica Currin  
Joann Day  
Kristen Dimitris  
Donors of Distinction  
DVD Consulting, Inc.  
Edgewater Club, Inc.  
Edward and Elyse Rogers  
Family Foundation  
Catherine Emerson  
Enclara Pharmacia  
Karen J. Enis  
John D. Esh  
Estate of William U. Funk  
Ferguson Skipper, P.A.  
Jonathan and Amy Fleece  
Frederick J. and Phyllis C.  
Bueche Fund  
Robert and Joan Geyer

Cynthia Griffith  
Gulfside Wealth  
Scott F. Gurr  
Beverly A. Harms  
Jane R. Hazelcorn  
Josephine K. Hennelly  
Hobart K. and Janis F. Swan  
Donor Advised Fund  
Ian Black Real Estate  
Charitable Foundation  
Ian Black Real Estate LLC  
J. Milton & Nellie E. Hoffa  
Memorial Foundation  
The Jean L. Michael Trust  
Clayton and Kim Johnson  
Theresa J. Johnson  
Michael and Sharon Johnson  
Jordan Johnson, Inc.  
Barbara M. Kafer  
Paul and Carol Kaplun  
Katharina and Joseph  
Schober Foundation  
Ned Katterhenrich  
Stephen and Beth Knopik  
The Knowles Family Fund  
Christie A. Krugler  
Cynthia J. Kuhlman  
Lakewood Ranch  
Community Fund  
Scott and Jill Levine  
Levine Family Fund  
Lisa C. Lindsay  
Earl and Darielle Linehan  
Kevin and Stacey Logan  
Louis & Gloria Flanzer  
Philanthropic Trust  
Manatee Community  
Foundation  
William A. Mann  
The Margaret McCartney &  
R. Parks Williams Foundation  
Thomas and Suzanne Marsh  
John and Michelle McKay  
Barbara Mehl  
Robert and Susie Melum  
William Menster  
Meritain Health  
James and Misdee Miller  
Judith B. Millspaugh

Misdee Wrigley and James  
Mather Miller Charitable  
Foundation  
Matthew Montalbano  
James and Kathleen Moran  
Sue L. Morey  
Morgan, Lewis & Bockius LLP  
MSL, P.A.  
Michael H. Murray  
Jackie Naclerio  
Osprey Nokomis Chamber  
of Commerce  
Parker Hudson  
Eileen Pease  
Leslie Pfika  
Stephen and Redenta Picazio  
Pink and Navy's Fleece Fund  
Les J. Pitstick  
Michael S. Plunkett  
Bertram Rapowitz and  
Lauri C. Pollack  
Terry and Colette Purcell  
Gayle Rainville  
RBC Wealth Management  
Stacey Redmond Roberts  
Cheryl S. Reynolds  
Martin D. Rich  
William and Mary Rigoulot  
Family Fund  
Karen S. Roberts  
Alfred S. Rose  
Rotary Club of Lakewood  
Ranch, Inc.  
Patricia A. Rotatori  
The Rowan Foundation, Inc.  
Roy K. and Elma M. Hett Trust  
Gwen Rundle  
Ruth H. Landes Fund  
William and Barbara Salisbury  
Endowment Fund  
Sarasota Ford  
Sarasota Private Trust  
Charles and Virginia Savidge  
Phyllis Savidge  
Savidge Family Foundation, Inc.  
William Schulz and Dell  
Bauslaugh  
Peter Scott-Hansen  
Judith Sear

# Our Generous Donors

October 1, 2021–September 30, 2022

Timothy Self and Paula  
Whiting Self  
Kathryn Serrell  
Roger T. Simpson  
Sisterhood For Good  
Jon Soderstrom  
Jacob and Paula Sorg  
Stahl & Associates Insurance  
Jeffrey and Ellen Steinwachs  
Paul and Sharon Steinwachs  
Astrid Stephan  
Russell and Sharon Stephens  
Karen A. Storey  
Hobart and Janis Swan  
Henry and Barbara Tafaro  
Target Graphics, Inc.  
Frank J. Tedesco  
Jason E. Toale  
Paul and Catherine Tomass  
Michael R. and Tammy  
Useton  
Edwin E. Van Pelt  
Venice Ranch Mobile  
Home Estates  
Pamela Weaver  
Jean Weidner Goldstein  
Edris C. Weis  
Wellsky, Inc.  
Joan M. Wheeler  
Carol B. Williams  
Lee Wingard

## **\$1,000–\$2,499 Donors**

Anonymous (10)  
1 Stop Landscape Supply  
Yard Waste Recycling  
1st Source Bank  
Academy Insurance Agency  
Robert J. and Shirley Adams  
Woodrow J. Alagood

Carolyn W. Albrecht  
Janette S. Albrecht  
Thomas J. Allen  
Robin Altmann  
Amateur Golf Association  
Manatee Chapter  
Paula Amesbury  
Donald T. and Georgia C.  
Anderson  
Anna Maria Island WOTM  
Chapter 1601  
Aroma Coffee Service, Inc.  
Donald W. Arquette  
Aviva Senior Living  
Janet Baker  
Bank of America Charitable  
Foundation, Inc.  
Susan C. Barber  
Gerald R. and Sydney  
Barkholz  
Baycross Foundation  
Benderson Development  
Company  
Sandra Benkner  
Michael P. Berasley  
Linda Berliner  
Susan Billings  
Suzanne J. Biviano  
BOA Sisterhood Circle #155  
Boar's Head Provisions Co., Inc.  
Boca CARES  
Boca Royale Cares Fund  
Edward G. Boettcher  
BOS Tampa  
Boscia Family Foundation  
Gilbert B. Bosse  
Saida J. Bouhamid  
Evelyn A. Brian  
BrightView Landscape  
Services, Inc.

Yukiko Brown  
Paula S. Bruder  
Helen Brueck  
Bruce Burnett  
Don and Nancy Burrer  
Neva M. Burton  
Celeste Byers  
Sam E. Cambria  
Douglas Carlson  
Jay M. Cashman  
Phillip and Elaine Charney  
Tracy Chester  
Margaret Christiansen  
Jeannette Cline  
Commodore Realty, Inc.  
Community Bank System, Inc.  
ConMed Corporation  
Doris J. Cook Foundation  
Lynn Corcoran  
John and Catherine Cranor  
Corrine Crawford  
Cynthia Curtis  
Lori Curtsinger  
Mayo W. Darby  
David Vershel Charitable  
Gift Fund  
David, Adrainne and Jordan  
Rubin Fund  
Carlo and Rebecca De Rosa  
Decorative Paver Concepts  
Phillip and Julie Delaney  
Jason DelGiudice  
Anthony and Joann  
Delorenzo  
Frank and Carol Depgen  
Ruth B. Deterding  
Ed and Deb Deuter  
George Devine  
Kim Devine

Dex Imaging, Inc.  
Ken Dieffenbach  
Alberto Dimillo  
Robert E. Dods  
Michael and Vindya  
Donahue  
David and Hannah D'Ottavio  
Janet Dukes  
Lauren A. Elias  
Ed and Annette Eliasberg  
Gail A. Elliott  
Jean L. Ellis  
Mitchell and Dawn Epstein  
John A. Ernst  
Sue Esber  
Estate of Arthur E. Adams Jr.  
Evelyn Brian Charitable Fund  
Joanne L. Fabec  
The Families of Robert and  
Anne Bagshaw  
Fawley Bryant Architecture  
Fidelity Brokerage Services LLC  
Kenneth Findley  
Florida Blue Foundation  
The Florida United Methodist  
Foundation, Inc.  
Susan K. Forbes  
Joanne L. Ford  
Laurie Fox  
John and Kelly Franz  
Fraternal Order of Eagles  
Ladies Auxiliary #3885  
Frederick Derr & Company, Inc.  
Barbara B. Freeman  
Louis and Carol Furlong  
Hans Gegenschatz  
Richard and Emogene  
Georgiades  
Alice Giardelli-Rolfe  
Nicola S. Gigliotti  
Lisa Gonzalez  
Christine Griffith  
Stacy M. Groff  
Michele Guffanti  
Gulf Coast Community  
Foundation  
Margaret Gutmann  
William and Kathryn Hallisey  
Elizabeth Hansen

Rebecca Hanson  
John L. Hay  
David Heagerty  
Gabrielle D. Hendricks  
Anthony N. Hobgood  
Alan G. Hoden  
W. P. Hoenle and Ursula  
Heitmann  
Claire Hopkins  
Robert Hrabovecky  
Diane Hurd  
Carol Hutchison  
Intellih Inc.  
Jack and Priscilla Schlegel  
Fund  
Sue A. Jacobson  
Jani-King of Tampa Bay  
John A. and Rosemary  
Jessup  
Jirout Kozlowski Family Fund  
Sally Johnson  
Barbara A. Jones  
D. A. Jones  
Divy Joshi  
Kent Kain  
Kenneth and Debra Karlin  
Edward and Carlene King  
Susan T. King  
Dennis M. Kirk  
Knights of Columbus  
Assembly 3192  
Knox Family Foundation  
Gerald and Janice Koler  
Joyce Koppel  
Thomas and Sherry Koski  
Steven J. Krause  
Alicia Kunisch  
Tara P. Kutnak  
William R. LaPenotiere  
David and Barbara Law  
Thomas Lecklider  
Steven M. Levin  
David R. Levine  
Corey Lilburn  
Lincoln Financial Group  
Live Oak RV Resort  
Fanetta R. Lowdermilk  
Jo Ann Loy  
Eric T. and Jill Lubiner

Carmen Luciano  
LWR Commercial Realty, LLC  
Robert Lytle  
David and Susan Macrae  
Barbara A. MacRitchie  
MagnifyGood  
Vincent and Margaret Maisto  
Brian Mannix  
Michael and Kathleen  
Martella  
Susan Martin  
Debbie Mason  
Matthew B. Mayper  
Robert and Beverly McClafflin  
McCrorry Law Firm  
Thomas A. McEntee  
Bonnie J. McIntyre  
Robert and Sharon McNutt  
Michael Melendez  
Susan F. Milman  
M. Bruce Miner  
Fermin C. and Jodi Miranda  
Timothy Mitten  
John and Charlene Moeckel  
Frederick and Molly Moffat  
Granville and Judy Morris  
Charles Morse  
Ellen W. Mosher  
John and Marianne Moyer  
Bill and Mary Muirhead Fund  
Patricia Murray  
Marcia S. Nalebuff  
Barbara K. Nalven  
Charlie and Patti Niccols  
Northside Christian Church  
of Christ  
Susan P. Nye  
Louis and Rosemary  
Oberndorf  
Oberndorf Charities Fund  
Sam and Muffie Ochi  
Timothy and Nancy Olson  
Alexandria Openchowski  
Palm Aire Country Club  
at Sarasota  
Barbara Z. Parker  
Benjamin and Linda Paster

# Our Generous Donors

October 1, 2021–September 30, 2022

## **\$1,000–\$2,499 Donors (continued)**

Stephen and Caryn  
Patterson  
The Patterson Foundation  
Leslie Patton  
Elizabeth Payne  
Philip and Laurie Perkins  
Suzanne Perry  
John and Deborah Petchul  
Pink & Navy Boutique  
Sheila A. Plante  
Kyle D. Poffenbarger  
Sandy Porter  
Ellen Posel  
Charlotte T. Qua  
Connie J. Raguso  
Richard and Kimberleigh  
Fund  
Joseph Richter  
Cecille Riggs  
Scott T. Ritter  
Linda B. Roberts  
Donald L. Roettele  
Steven and Carolyn  
Roskamp  
Wendy Rossiter  
Kevin Ruben  
David and Adrienne Rubin  
David T. Rusch  
Thomas Johnson and  
Sheri Russell  
Burton “Skip” and Gail Sack  
Sack Family Foundation  
SageView Advisory Group, Inc.  
SahanDaywi Foundation –  
Substation 1  
Andrew Salgado  
Sarasota Memorial  
Healthcare Foundation

Sarasota Memorial Health  
Care System  
Robert and Barb Schaal  
James Schaeffer  
Lawrence E. Schafer  
John and Priscilla Schlegel  
Josephine Schroeder  
Schroeder–Manatee Ranch, Inc.  
Schwab Charitable Fund  
Sam Sciturro  
William and Kathy Seider  
Joseph and Jaye Semrod  
Semrod Family Private  
Foundation  
Sharon & Russell Stephens  
Donor Advised Fund  
Elaine Shea  
Shumaker, Loop & Kendrick, LLP  
Stephanie Sifrit  
William and Amanda Simmons  
Sarah J. Singer  
Eileen Singletary  
Kay Skinner  
Small Craft Advisory Fund  
Elizabeth D. Smith  
Peter Smith  
Theodore and Carol Smith  
Mercedes Smith  
Lynne C. Smith  
Rise’ Snider Loshawk  
Clarence Socia  
Socia Foundation Inc.  
Bob and Kim Specht  
James R. Spencer  
Gretchen L. Speranza  
Stephen and Lucia Spotte  
Philip and Reda St. John  
St. John Spirit of Kindness  
Fund of the Manatee  
Community Foundation  
Joan M. Stancil

Renee G. Stevens  
Jessica H. Stevenson  
Robert and Frances Storey  
Thomas T. and Cynthia  
A. Stuhley  
Sara Stutzman  
P. C. Sundareswaran  
Tandem Construction  
Gregory T. Taylor  
Bonnie Taylor–Lynch  
Wayne Thomas  
Donald L. Thompson  
Marlyn Thornton  
Catherine C. Tiemeyer  
Together We Give Giving  
Circle Fund  
Ralph and Sheri Trine  
Wayne and Mary Gayle  
Underhill  
Richard T. Van Alen  
Robert G. Van Zandt  
David and Monica Verinder  
David S. Vershel  
Brian Volner  
Bonita J. Walker  
Jeri Walsh  
Audrey L. Walther  
WBRC Architects–Engineers  
Joanne J. Webster  
Charles and Wendy Weiss  
Judith C. Werner  
Barbara S. Wesling  
Barbara L. Whitcraft  
J. Michael and Barbara  
White

## Foundation Supporters and Grantors

Atlanta Braves Foundation  
Bernard and Mildred Doyle  
Charitable Trust  
Boca CARES  
The Community Foundation of  
Sarasota County, Inc.  
Donors of Distinction  
Edward and Elyse Rogers  
Family Foundation  
Eluned and Edward Russell  
Charitable Foundation  
Gulf Coast Community  
Foundation  
J. Milton & Nellie E. Hoffa  
Memorial Foundation  
KBR Foundation, Inc.  
Lakewood Ranch  
Community Fund  
The Margaret McCartney &  
R. Parks Williams Foundation  
The McCune Family Foundation  
National Alliance for  
Grieving Children - Brave  
of Heart Fund  
The Patterson Foundation  
The Ralph S. French Charitable  
Foundation  
Regmark Foundation, Inc.  
The Robert G. and Ellen S.  
Gutenstein Family Foundation  
Rotary Club of Lakewood  
Ranch, Inc.  
Sisterhood For Good  
Suncoast Credit Union  
Foundation  
Wilson-Wood Foundation, Inc.

## Legacy Society

Anonymous (13)  
Janette S. Albrecht, M.D.  
Francine Alexander  
Susan Arndt  
Nina Arzberger  
Linda Bakonyi  
Tom and Marie Belcher  
Larry W. Benson and Jerry D.  
Waterman Family Trust

David H. Bettenga  
Hwa C. Beyer  
John Bodenburg and  
Nancy Helmer  
Robert Bole  
Rosalind Brack  
Theodore M. Brenkacz  
Christy Buckley-Currie  
Patricia J. Case  
George and Joyce Chase  
Diane Chechik-Temple  
Claudia S. Christensen  
Joseph Cincotta  
R. Todd Craig and  
Ronald G. Winters  
Joel S. Cuba and Sandra B.  
Cuba Charitable Fund  
Antonette M. Cunningham  
Robert Davies, Jr.  
Jan and Bill Davis  
Neena Derf  
Caroline and Anthony  
DeSantis  
Howard and Ann Drazic  
Wyn Entis  
Gerda Fife  
William Geller  
Thomas E. Gerrity  
Cheryl and Tom Gibbons  
Jack F. Greer  
Bev & Brad Hahn  
Roslyn P. Haney  
Linda A. Heg  
Adrienne Johnson  
Sheryl and James Kaiser  
John J. Kestly  
Jerry and Sondra Kuskin  
Carole E. Landon  
Michael Lefrois  
Barbara J. Lupoff  
Dr. Barbara Maier  
Joan S. and John D. Marsh  
Debbie Mason  
Demir and Gamache Family  
Jan Miller  
John and Charlene  
Moeckel

Sue Lehmer Morey  
John and Marianne  
Moyer  
Pamela Naff  
Alexander Nichols  
Mrs. Anne Ouchark and  
Mr. William F. Ouchark  
Dr. Terry L. Palls  
Gretchen Phelan  
Deborah Poff and  
Valarie Clark  
Lauri C. Pollack  
Polly Pond  
Karen Price  
Gerry Radford  
Marta D. Rapoport  
James R. Roorda  
Steven D. Roskamp  
Joseph R. Rowen  
Bob and Linda Shea  
Eva T. Slane  
Dr. Marlene A. Spencer  
Dirk Stark in Memory of  
Barbara Stark  
Stanley P. Stephenson  
Mary A. Szydlowski  
Robert L. Taflinger  
Susan P. Thomas  
David F. and Nancy O.  
Thomson Trust  
R. T. Van Alen  
Grant and Kathy  
Verderpool  
Helen L. Vetter  
David Voelker  
Paula J. Whiting-Self  
Kenneth and Rosemarie  
Williams  
Edith I. Winston  
Debbie Wohlers  
Barbara G. Zdziarski  
David and Peggy  
Zimmerman



# Ways to Give and Donation Plans

---

## Planned Giving and Legacy Giving.

Generosity comes in many forms. Donors have helped Tidewell create and sustain a legacy of world-class care for more than 40 years. Planned giving ensures that you support what is most meaningful to you and your family, at a time that is right for you.

Tidewell Foundation's Legacy Society recognizes the generosity of patrons in our planned giving program. Those who share our commitment to end-of-life care in our community may be interested in making a gift through their estate and financial planning.

When you leave a planned gift to Tidewell Foundation, you leave a legacy that will touch the lives of many others. A planned gift provides tax benefits to you now and helps sustain the mission of Tidewell Hospice to provide care, comfort, and compassion to all, well into the future.

### Make a Gift at Anytime

You can help brighten the lives of families in need with a donation today. Your support of Tidewell Foundation allows us to build a future where world-class full-life care is accessible to all. Learn all the ways you can give or donate online at [TidewellFoundation.org](https://TidewellFoundation.org)



## 1 **Vehicle Donation**

Your unwanted car, truck, trailer, boat, RV, or motorcycle can help Tidewell Hospice patients. The Tidewell Foundation will arrange for the vehicle to be picked up and sold at auction, and you receive a tax receipt.

## 2 **Receive Life Payments for a Donation Made Now**

Creating a Charitable Gift Annuity, Charitable Remainder Trust, or Charitable Remainder Annuity Trust provides a donation to the Tidewell Foundation that pays you income for life while minimizing your income tax.

## 3 **Donate Highly Appreciated Stock and Avoid Paying Capital Gains Tax**

By donating highly appreciated securities owned for a year or more to Tidewell Foundation, you receive a tax deduction and eliminate your capital gains tax. The securities must be transferred to Tidewell Foundation instead of being sold by you.

## 4 **Give From Your IRA at Age 70½**

If you are 70½ or older, you can make a qualified charitable deduction (QCD) from your IRA directly to the Tidewell Foundation up to \$100,000. You will be gifting pre-tax dollars and avoid income tax, because it goes straight to a charity.

## 5 **Gift Your Life Insurance**

Various methods exist for making life insurance donations; each method has unique advantages. One option is to simply name Tidewell Foundation as a full or partial beneficiary of your life insurance policy.



“

After my wife of 65 years died in hospice care, just three months after we lost our son in a motorcycle accident, a friend invited me as a guest to a Tidewell Foundation donor appreciation luncheon. It was there I learned everything Tidewell Hospice offers to our community and where I found caring and compassion for my own grief. So many can benefit from their care. Tidewell is a perfect charity for annual donation, plus I shall leave them a charitable donation in my will.”

”

~Dave Thomson



**One relationship at a time,  
we strengthen our community.**

**One patient at a time,  
we raise their spirits.**

**One family at a time,  
we lighten the load.**

**One person at a time,  
we care for all.**



empath  
**TIDEWELL FOUNDATION**

**Delesa Morris, MS, CFRE**, Interim President

**Sean Allison**, Philanthropy Advisor

**Jennifer Bernthal**, Creative Services Manager

**Lisa Brosky**, Director of Communications

**Lorraine Constantino**, Administrative Manager

**Michelle Forbis**, Assistant Manager — Tidewell Treasures Venice

**Eugenia Gainers, M.Ed., PMP**, Grants & Program Manager

**Shannon Johnson**, Special Events Manager

**Debbie Kenny**, Manager — Tidewell Treasures Venice

**Diane Liuzzo**, Assistant Manager — Tidewell Treasures Sarasota

**Chris Pfahler, RN, BSN, CFRE**, Senior Philanthropy Advisor

**Larry Richards**, Philanthropy Data Specialist

**Carrie Smith**, Assistant Manager — Tidewell Treasures Venice

**Nicole Taylor**, Philanthropy Advisor for Data Management

**Megan Wenger, CFRE**, Senior Philanthropy Advisor

**Jamie White**, Manager — Tidewell Treasures Sarasota



Tidewell Foundation is grateful to our sustaining annual corporate partners for their ongoing sponsorship of the Foundation's work.

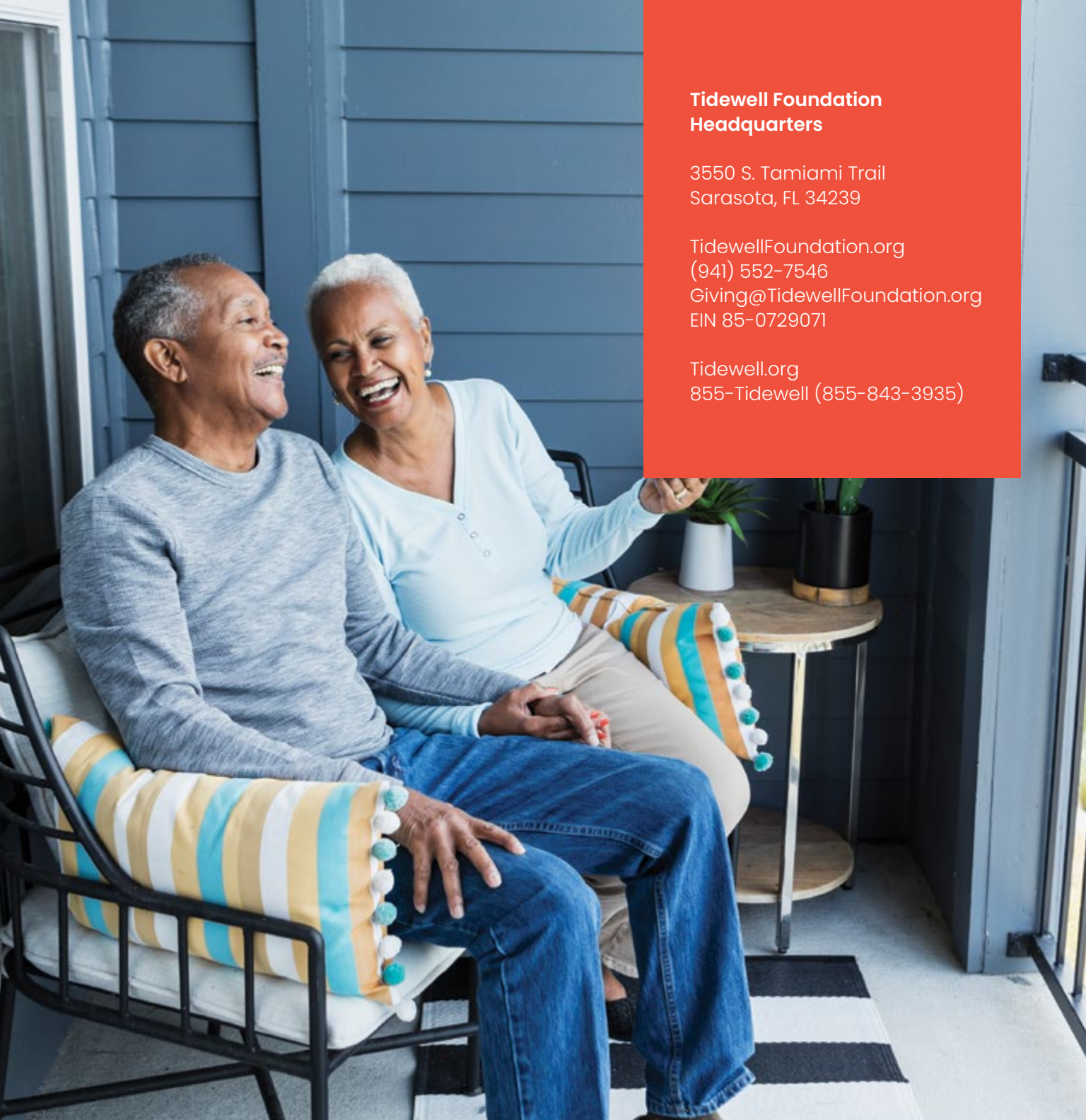
**Sustaining Annual Corporate Partners**

Partners in Excellence



Partners in Compassion





**Tidewell Foundation  
Headquarters**

3550 S. Tamiami Trail  
Sarasota, FL 34239

TidewellFoundation.org  
(941) 552-7546  
Giving@TidewellFoundation.org  
EIN 85-0729071

Tidewell.org  
855-Tidewell (855-843-3935)

The Tidewell Foundation, Inc. is a registered 501(c)(3) non-profit corporation. A copy of the official registration and financial information may be obtained from the division of consumer services, by calling toll-free 1-800-435-7352 (or 1-800-352-9832 en español) or going on the department's website [www.FloridaConsumerHelp.com](http://www.FloridaConsumerHelp.com).

Registration does not imply endorsement, approval, or recommendation by the state. One hundred percent (100%) of the donation is received by the Tidewell Foundation, Inc. Charitable Solicitation Registration #CH63240 TF-031423-1158