

# live brighter



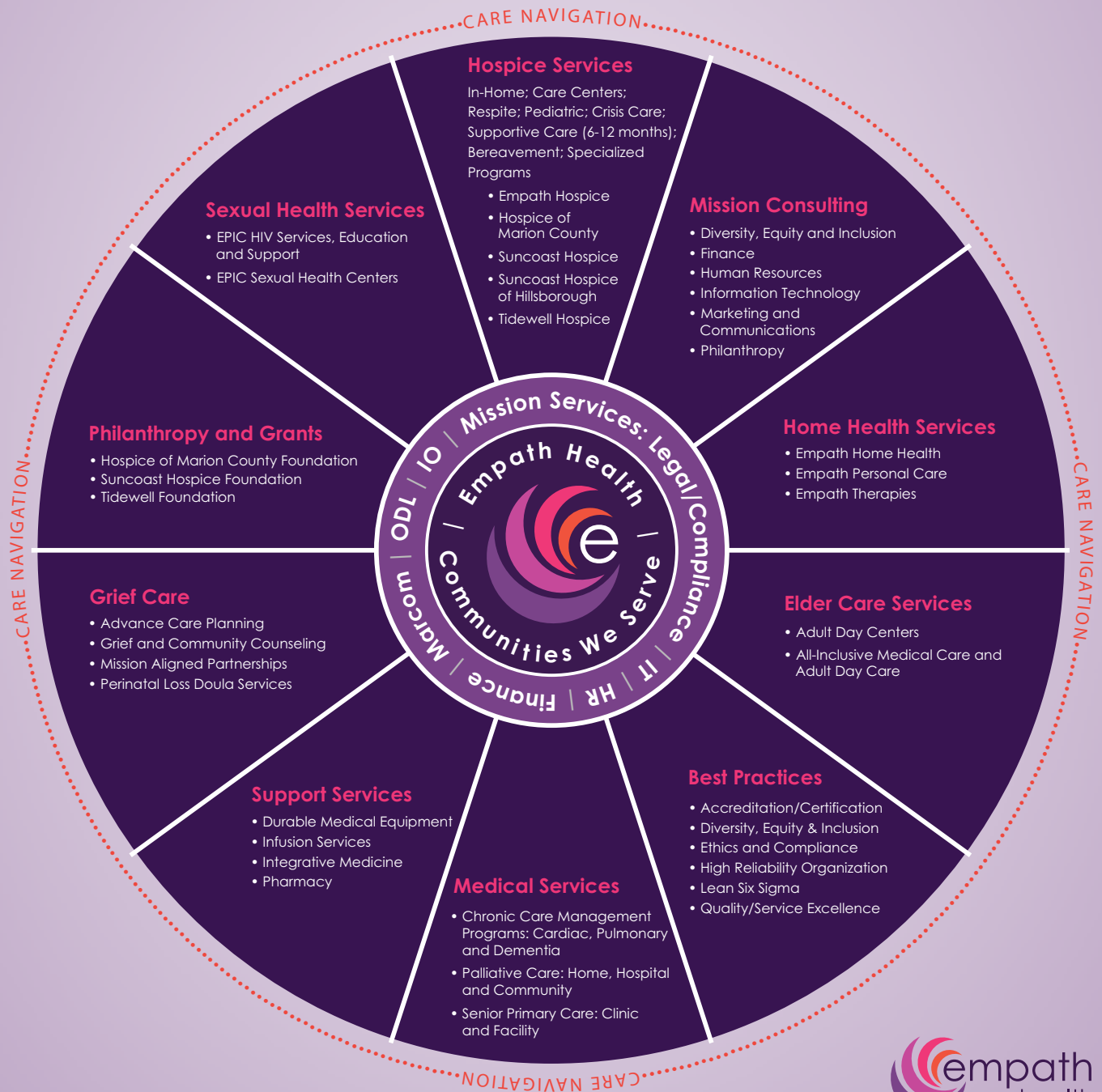
 **empath**  
**TIDEWELL**  
**FOUNDATION**

 **empath**  
**TIDEWELL**  
**HOSPICE**

## Community Impact Report

Fiscal Year 2023

# Empath Health Wheel of Access



# Dear Friends and Supporters

---

Your generosity during the 2023 Fiscal year has made a profound impact on our community. We hope that this is evident as you peruse the pages of this report. We are grateful for all the donors who have joined us in deepening our commitment to our patients, their families, and our community at large. You are truly brightening lives.

As we look to the year ahead, it is an honor to lead us forward in our mission: serving our communities through extraordinary Full Life Care for all. The Foundation remains rooted in the communities we serve, and your support makes it possible to sustain and expand exceptional programs and services to patients and communities.

As we look back at 2023, we are struck by how incredibly impactful your gifts have been. From hospice, home health, and senior care services to veteran care and community counseling, we are proud to share the wide range of care that your gifts make possible.

We hope you feel a sense of accomplishment and reward as you read on. It is with sincere gratitude that we share how your investment is brightening the lives of patients and families in our communities.

Together in our mission,



A handwritten signature in blue ink that reads "Delesa Morris".

Delesa Morris, MS, CFRE  
President, Tidewell Foundation



A handwritten signature in black ink that reads "Jonathan D. Fleece".

Jonathan Fleece, Esq.  
President & CEO, Empath Health  
and Affiliate Programs





# Pioneering Full Life Care

---

“Eternally hopeful, profoundly helpful, lovingly truthful we serve, and we offer the understanding, guidance and human connection that enables the fullest life...”





## Redefining Health Care as Full Life Care

Empath Health is uniquely devoted to pioneering all-embracing care that provides for the full life. We are here for all stages of care, for all dimensions of well-being, and for all aspects dear to one's life. We consider it a privilege and a calling to give more of ourselves to offer a truly exceptional experience, unlike any other. Through an abundance of expert care and an out-pouring of heartfelt compassion, we embolden all with the clarity of understanding, the power of choice and the promise that, "You're not alone." Eternally hopeful, profoundly helpful, lovingly truthful we serve, and we offer the understanding, guidance and human connection that enables the fullest life—every step purposeful, every moment meaningful.

Donors can remain assured that their contributions will benefit the four county region by investing in the Tidewell Foundation as they provide support of hospice care, complemented by Empath's new programs and growing list of services for the community.

## Empath Health Board of Directors

Oct 1, 2022 – Sep 30, 2023

**Tom Stuhley**  
Chair

**Ben Hayes**  
Vice Chair

**Chad Whetstone**  
Treasurer

**Jan Miller**  
Secretary

**Linda de Mello**  
Board Member

**Deborah Nicklaus**  
Board Member

**Linda Plaster**  
Board Member

**Michael R. Uselton**  
Board Member



# Next Generation Nursing

Empath Health has redefined health care as “Full Life Care,” an approach that demonstrates our commitment to provide for all stages of care, for all dimensions of well-being and for all aspects dear to one’s life. One way that Empath Health puts this philosophy into practice is the training of its nurses.



 empath  
**TIDEWELL  
HOSPICE**

## Tidewell's Nurse Residency Program

The Tidewell Nurse Residency Program, which began in 2018, provides newly graduated registered nurses with a comprehensive nurse residency program that includes 12 months of nurse specialty training in hospice care.

The program is designed to support the transition from nursing school into the professional role of a hospice nurse. Nurses participate in instructive education, simulation, and clinical care of hospice patients in various care settings including inpatient centers, patient homes and long-term care facilities.

## Simulation Lab

Empath's Simulation Lab is the next generation of hands-on training for its clinical staff: nurses, nurse assistants, social workers, and clergy. Becoming accustomed to the environment is especially important for hospice training where clinicians must be adept at treating symptoms, providing education, and having difficult conversations with a patient and their caregiver.

Set up as a scene that hospice caregivers may encounter when visiting the home of a patient, the Simulation Lab mirrors living conditions of the living room and kitchen area of a patient's home, the area where most hospice care is given. Healthcare hazards abound, such as cords snaking across the floor, unorganized prescription bottles in various locations, cockroaches on dirty dishes in the sink and soiled adult diapers on the sofa. Anita Smith, MSN, RN, Manager of Clinical Curriculum and Director of Nurse Residency and Simulation for Empath Health says such training scenarios are often seen in the home of a hospice patient where end of life can overwhelm the acts of daily living. "These clues can indicate that the family may need additional services in their home. The nurse can contact a social worker to help."

*(Continued on page 8)*

## Tidewell Hospice Board of Directors

Oct 1, 2022 – Sep 30, 2023

**Matthew Mayer**

Chair

**Mindy Ryals**

Vice Chair

**Kimberlie Buchanan**

Treasurer

**Daniel Deems, MD, PhD**

Secretary

**Kwame Alexander**

Board Member

**James Fiorica, MD**

Board Member

**Robert Hillstrom, MD**

Board Member

**Kevin P. Logan**

Board Member

**Marge Maisto**

Board Member

**Fermin "JJ" Miranda**

Board Member

**Jake Sorg**

Board Member

**Jonathan Fleece**

President & CEO, Empath Health





## Simulation Lab *(continued)*

The nurses also encounter custom-programmed patient and caregiver manikins in the scene. The manikins are programmed to exhibit physical symptoms such as labored breathing, elevated heart rate, irregular heart rhythm and abnormal lung and bowel sounds. They communicate what the patients are experiencing. The manikins' programming software allows trainers to devise different scenarios and react to training prompts in real time. Interactions are recorded and studied for improvement.

Anita says, "we can program the manikins to speak and ask questions such as 'why am I dying.'" We practice soft skills so clinicians

can answer these questions in the lab before seeing patients. The goal is to get the jitters out there and prepare them for meeting patient and family needs during their real-life visits."

The lab's hands-on hospice specialty training for nurses and clinical staff is thought to be the only one of its kind, teaching learners how to assess the full continuum of care for a patient's family needs. Funding for the Simulation Lab was generously provided by the Empath Health Board of Trustees and donor/volunteer, Julie Osborne, who also made the lead donation to get the Nurse Residency Program off the ground.

# Tidewell Hospice By The Numbers


The Tidewell Foundation supports innovative Tidewell Hospice and Empath Health programming for this region.



**10,238**  
Patients Served



**\$0.93**  
of Every Dollar Going to Direct Patient Care



**69,464**  
Volunteer Hours Logged



**33**  
Volunteers Equal To Full-Time Employees




**\$1,514,645**  
Value of Time Donated by Volunteers



**846**  
Total Number of Employees



**4,410**  
Patients Served in Sarasota County



**3,420**  
Patients Served in Manatee County



**2,146**  
Patients Served in Charlotte County



**262**  
Patients Served in DeSoto County

### Licensing/Accreditation

The National Institute for Jewish Hospice Accredited	Medicare and Medicaid Certified	CHAP Accredited with Deemed Status	Florida State ACHA Licensed	The Joint Commission Accredited
---	------------------------------------	---------------------------------------	--------------------------------	------------------------------------



# Fundraising For Brighter Days

Donors help brighten the lives of the patients and families of Sarasota, Manatee, DeSoto and Charlotte counties every day.



 **Empath**  
**TIDEWELL**  
**FOUNDATION**



**Families** who have experienced the loving care of Tidewell Hospice speak about the empathy, compassion, and care found in every team member. They share the comfort they felt in the hands that were held, the hugs that were given, the tears that were wiped away, and the strength in learning that tomorrow will be brighter.

The Tidewell Foundation is dedicated to making sure all patients can experience brighter days. With the generosity of donors' visions and legacies, together we lift all patients' spirits, lighten caregivers' loads, and are there to brighten the darkness of life's difficult times.

In the following pages, you will learn about many quality-of-life-improving services funded by grants from Tidewell Foundation to Tidewell Hospice: Care for All, Grief Support, Complementary Services, Humanitarian and Wishes programs, Cardiac Care program, Workforce Development, and Tidewell Honors Veterans program. You will also learn about our resale stores, Tidewell Treasures, which takes donations of high-quality gently-used household goods, clothing, books, and more... and turns them into monetary donations to the Foundation with every sale.

## **One Relationship at a Time**

The Tidewell Foundation is comprised of a dedicated team of professionals who build relationships with community members and colleagues from Tidewell Hospice and Empath Health. Funding for programs and services are provided by individuals, corporate and foundation partners, Tidewell Treasures Stores, third-party donations, and events: Signature Luncheon, Remembrance Walk, Linens and Love Drive, Thanksgiving Meal Drive, and Blue Butterfly Holiday Gift Drive.

The positive financial impact Tidewell Foundation provides in our community is evident in the number of individuals served on each program's overview. The "Tidewell Stories" in this report demonstrate the life-brightening impact our funding brings, from the real-life experiences told by Tidewell Hospice patient families and caregivers.

## **Tidewell Foundation Board of Directors**

**Oct 1, 2022 – Sep 30, 2023**

**Renee Eppard**

Chair

**Thomas Stuhley**

Vice Chair

**Steve Hall**

Treasurer

**Jason Toale**

Secretary

**Judy Berlow**

Board Member

**Dan Deems, MD, PhD**

Board Member

**Raymond D.  
Hautamaki, MD**

Board Member

**Victoria Kasdan, RN, MPH**

Board Member

**Kory D. Lee, CFP**

Board Member

**Jan Miller**

Board Member

**Jonathan Fleece**

Ex-Officio

**Delesa Morris, MS, CFRE**

President  
Tidewell Foundation



## Linens for Those Who Have None

Tidewell Foundation President, **Delesa Morris**, poses with leaders from the 3rd Annual Linens and Love Drive sponsor, **Dignity Memorial**, among containers of donated linens.

Hundreds of sheets, towels, other linens and \$4,025 for linen purchases were donated during the linen drive.

Many patients who enter the care of Tidewell Hospice lack the extra long twin sheets that fit the hospital bed brought to their home. Other patients simply lack needed linens.

**Thanks to all who donated to the 2023 linen drive.**

**L-R:**  
David Luginbuel, Mark Panter, Delesa Morris, Rick Groover, Jason Toale, Duane Lafollett

# Community Impact



**\$800,000**

Charity Care  
Care for All



**\$53,579**

Tidewell Honors  
Veterans



**\$621,824**

Tidewell Blue  
Butterfly Program



**\$1,278,843**

Community Grief Center  
and Grief Education  
Support Services



**\$146,135**

Cardiac Care  
Program



**\$511,579**

Nurse Residency and  
Home Health Aide  
Programs



**\$415,957**

Complementary  
Services



**\$30,193**

Humanitarian  
and Wishes Funds



**\$60,795**

Pediatric  
Hospice Care



# Charity Care: Care for All

Giving to the Tidewell Foundation allows us to Care for All. We never turn away patients who are uninsured or otherwise unable to pay—whether for palliative care, hospice care or any of our other compassionate programs or services.



 <b>869</b> Number of Hospice Patients Served	<b>533</b> Complementary Therapy Visits	<b>2,499</b> Spiritual Counselor Visits	<b>2,969</b> Social Worker Visits
<b>2,263</b> Physician Visits	<b>24</b> Bereavement Counselor Visits	<b>7,501</b> Skilled Nursing Visits	



## What We Do

Thanks to the many generous donors, Tidewell Foundation provides support for area patients who are too sick to work, don't have insurance or Medicare, or are in financial need.

- All patients receive quality medical care, equipment, and counseling. Services include visits from physicians, social workers, skilled nurses, spiritual counselors, bereavement counselors and those providing complementary therapies.
- Hospice services that are not reimbursed through Medicare, Medicaid or insurance are funded by donor support.

## Your Donations At Work

Because of donors like you...

- Patients who are ineligible for Medicare can obtain hospice services.
- Families can spend quality time with their child, not worrying about finances.
- Single parents who lose their insurance because they are unable to work can receive full hospice care for their child.
- Elderly patients can enjoy visits from an affectionate therapy dog to reduce pain and anxiety, a complementary service not covered by insurance or reimbursed by Medicare/Medicaid.

## Why Your Support Matters

Facing a terminal illness brings with it many concerns; worrying about how to pay for end-of-life care shouldn't be one of them. The compassionate support of donors brings hope and brightens the lives of patients at such a difficult time, allowing them the opportunity to face the end of their lives with dignity and grace.

## Clean Linens Where There Are None

A 52-year-old patient, living in a home that was infested with cockroaches, moved to a large travel camper in which to live.

Through the support of the Tidewell Linen Closet—a program developed by the Tidewell Foundation in partnership with Dignity Memorial—the Tidewell clinical team was able to immediately provide her with new clean pillows, sheets and a towel set.

Having these linens afforded her an extra measure of comfort and compassion at such a difficult time.



# Grief Support

Grieving the loss of someone we love is one of life's hardest challenges. With the support of our donors, free grief care is available to everyone and provides hope and healing.



**2,514**

Hospice Grief  
Support Sessions

**494**

Hospice Grief  
Individuals  
Served

**664**

Community Grief  
Individuals Served

**4,149**

Community Grief  
Support Sessions

**642**

Individuals Served  
by Empath Tidewell  
Blue Butterfly



## What We Do

Many who have experienced loss need help to navigate their new normal. Tidewell Foundation funds Empath Health Grief Care, the largest provider of professional grief counseling and support groups in our four-county area. This includes counseling for children and adults, those who have experienced the traumatic loss of a loved one, or received a diagnosis of a serious illness or suffered a perinatal loss. These services are available even if your loved one was not a Tidewell Hospice patient.

## Why Your Support Matters

Grief eventually touches us all. The need is ongoing, and the waiting list for services continues to grow. With your generous and loving support, we can help them find light in the darkness.

## Your Donations At Work

- No one is turned away to live with their grief alone.
- Grief centers allow counselors to see grieving families in person, providing hope, healing and improved mental health.
- Partnerships with local churches provide space for grief support groups, allowing the sharing of communal loss.
- When tragedies occur, first responders receive special counseling from our grief care team.



## Rebuilding After Loss

In a world that has been rearranged by loss, Tidewell has been there for me.

My daughter, who was vibrant and beautiful, died when she was 41 from brain cancer. Fifteen months later, my husband and love of my life, died from the same form of cancer.

I found Tidewell's anticipatory grief services when my daughter decided to stop seeking treatment. My grief counselor, Patricia, helped me navigate the most heartbreaking moments of my life. It's easy to get lost in the pain of grief, but I know I can always count on Patricia to answer the phone and help me find my way.

When my husband was diagnosed, 10 days before Amanda died, I immediately called Patricia and told her "I'm going to need more time with you." She was there for me, without hesitation. I am in the process of rebuilding my life around this tremendous loss.

Patricia continues to help me sort through the rubble and put the pieces back together. I know I will grieve for the rest of my life, but the free grief support Tidewell offers, made possible by the generosity of Tidewell Foundation supporters, has helped make the hard days a little easier.

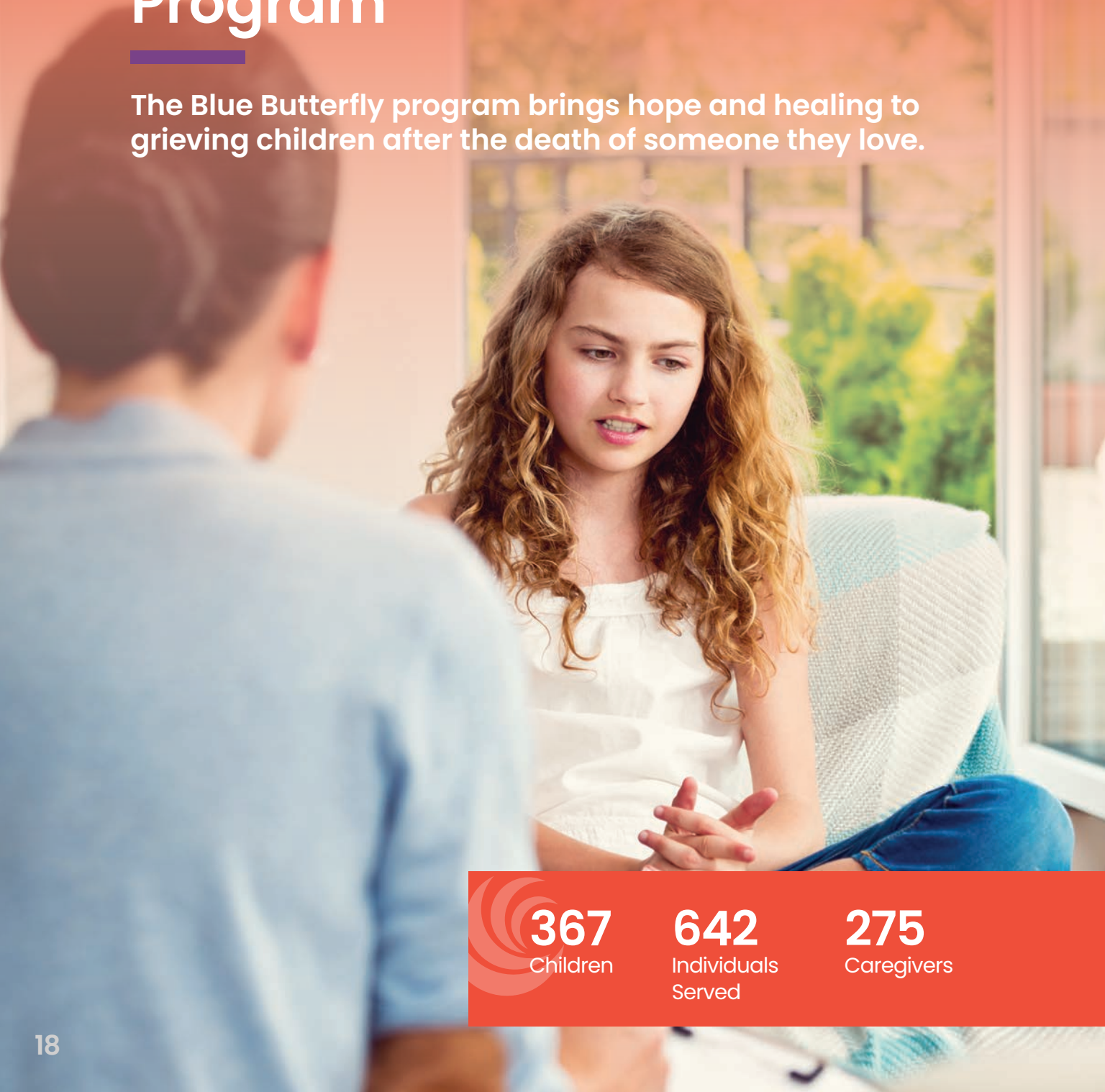
*~Sue, Wife, Mother,  
Tidewell Grateful Family Member*



**TIDEWELL GRIEF CARE**  
*Blue Butterfly* 

# Blue Butterfly Family Grief Program

The Blue Butterfly program brings hope and healing to grieving children after the death of someone they love.



**367**  
Children

**642**  
Individuals  
Served

**275**  
Caregivers

## What We Do

More than 8,000 children in our area lose a parent or sibling each year. Blue Butterfly provides grief therapy for children aged 5-18 and their caregivers, regardless of when the death occurred or if their loved one was a patient of Tidewell Hospice.



Our model includes evidence-based activities to help children feel safe to share their feelings alongside their peers. Caregivers also participate in support groups, where they learn how to support their grieving child and themselves.

## Why Your Support Matters

Thanks to our donors, Blue Butterfly provides grief therapy free of charge, allowing more children and families to find light and healing during their darkest days.

## Your Support at Work

Because of donors like you...

- Families shattered with grief receive the therapy they need to heal, without worrying how to pay for it.
- A safe space is provided for the children, allowing them to share their feelings, develop friendships with other grieving children, and prevent problems such as isolation, drug abuse, self-harm and suicide.
- Developmentally appropriate expressive arts, games, and music activities are employed to keep their loved ones' memories alive.
- Entire families benefit from support groups for both the children and their caregivers in four locations around our region.

## A Child's Grief is Unique

When an abrupt traumatic loss became a part of my daughter's life, **Blue Butterfly Family Grief Program** and a very devoted Certified Child Life Specialist were there.

I, as her parent, had no tools; there is no parenting instruction book for how to do this. Every aspect of my young daughter's life was instantly disrupted. She went from a bubbly, carefree, outgoing, brilliant, articulate child to instantly silent, sleepless nights, exhausted, depressed, panic attacks... a completely different person who referenced herself as a type of a fruit. Tidewell Blue Butterfly specialists knew why: because fruit does not have feelings, and that is what my daughter wanted for herself.

Without the creative, skilled, committed counseling guidance of Blue Butterfly's Certified Child Life Specialists, my daughter would be lost dealing with unresolved loss issues. She would still be laying in her parents' bed silent, curled into the fetal position. Her loss and grief journey is not over, and will always be a part of her new life; however, with the valuable guidance of the Tidewell Blue Butterfly program, she is receiving the tools, the support, the validation to grieve, process, heal and live through her loss.

*-Jessica and Eugene Nock*



# Complementary Services

Innovative therapies improve the quality of life for patients nearing the end of their lives.



## Music Therapy

**2,666**  
Visits

**824**  
Patients Served

## Massage Therapy

**1,504**  
Visits

**305**  
Patients Served

**760**  
Pet Therapy  
Visits

**428**  
Reiki Therapy  
Sessions

## What We Do

Tidewell Hospice offers a variety of Complementary Services that brighten the lives of patients. Innovative forms of therapy—music therapy, pet therapy, expressive arts, massage and Reiki therapy—are just some of the healing techniques employed to reduce pain, stress and anxiety and provide comfort to patients.

## Why Your Support Matters

The demand grows every year for these services. It's our mission to share the healing power of these therapies with all who need it. Thanks to the generous support of our donors, the Tidewell Foundation can continue to fund Complementary Services for patients.

## Your Donations At Work

Because of donors like you...

- Music therapy helps hundreds of patients reconnect with treasured memories, lifting the mind, body, and soul.
- Volunteer artists are paired with patients, allowing them to direct their creative focus away from their pain.
- Licensed Massage Therapists provide the healing power of touch and Reiki therapy, supporting patients as part of end-of-life care.



## Providing Unconditional Affection and Peace

For more than 23 years, **Susan Purser** has brightened the lives of patients with visits by her three dogs—most recently Tazi, her 3-year-old Australian Cattle Dog. Tazi is one of 40 certified dogs that ensure hospice patients receive unlimited affection.

Susan points to the peaceful experience the dogs provide for someone at the end of their lives. “Tazi will hop in a bed and put her little head right on their chest. The focus is on giving unconditional love. It’s like peace on earth.”

Susan also certifies new pet therapy dogs with Bright and Beautiful Therapy Dogs, Inc., the national organization that certifies all Tidewell therapy dogs. She often runs into families she visited with and hears how much the dogs meant to their loved ones. This volunteer with the great big heart says, ***“You can’t replace that feeling. My salary is a hundred million smiles.”***

# Cardiac Care

---

Compassionate management of end-stage heart diseases allows patients to remain safe in the comfort of their own home to monitor health and manage symptoms.



**400**  
Patients Served



## What We Do

The Empath Health Cardiac Care program keeps patients with end stage heart failure and cardiomyopathy out of the emergency room. It decreases hospitalizations and allows patients to receive necessary treatment in the comfort of their home.

Nurses work to control patients' cardiac symptoms in coordination with their private physicians and Empath Palliative Care physicians.

## Why Your Support Matters

The Empath Health Cardiac Care program provides patients with high-quality, end-of-life care thanks to the generous contributions of our donors. This ultimately results in improved quality of life for patients, reduced cost of care, better symptom management, and increased support for the family.

## Your Donations At Work

Because of donors like you...

- Clinical staff visit patients regularly to monitor subtle changes in their health, and act on them before they may require hospitalization.
- Patients receive a cardiac care comfort kit that includes cardiac medications that can help keep them out of the emergency room.
- Education is provided to teach the patient and their family the signs and symptoms that may require medical intervention.

## Heart-to-Heart

"Patients with end-stage heart failure have many and varied needs. It takes a village to care for them!" says **Lorraine Maass**, BSN, RN, a Clinical Program

Development

Specialist for the Tidewell Hospice's Advanced Cardiac Care Program.

Lorraine has been caring for cardiac patients since the inception of the program. She shares, "Hospice provides the village

and the Cardiac program equips the village to provide the best care possible.



We provide 'High-tech' care—our staff has been trained to provide heart failure patients with advanced therapies. Working as a team with patients and their families, we also provide 'High-touch' care to assess, educate, and support patients and their families. Teamwork allows many staff members to interact with our patients. Those frequent visits help the team in identifying problems early, allowing them to intervene swiftly to prevent suffering."

~Lorraine Maass, BSN, RN

Clinical Program Development  
Specialist, Cardiac Care Program

# Tidewell Humanitarian and Wishes Funds

Special funds bring light and comfort to end-of-life for patients and their families.



22

Patients Served Through the Humanitarian Fund

41

Patients Wishes Granted





## What We Do

The Wishes Fund allows cherished wishes to come true during a patient's final days. From sunsets at the beach and extraordinary events, travel assistance for family member visits, or impromptu wedding ceremonies, end-of-life wishes are fulfilled, allowing loved ones to make the most of their time together.

Being a caregiver is often overwhelming both physically and emotionally. The Humanitarian Fund helps alleviate the stress of caregiving by granting emergency, non-medical financial relief such as rent assistance, groceries, or utility bill payments. Caregivers are better able to focus on their loved one's medical care.

## Why Your Support Matters

The Wishes and Humanitarian Funds are made possible by generous donor support. Tidewell relies on the community to help patients and their families create lasting, cherished memories.

## Your Donations at Work

Because of donors like you...

- A patient who was a long-time hockey fan, was able to attend a game and see his favorite Tampa Bay Lightning player make the winning shot.
- The family of an infant with days to live was able to take professional family photos to treasure forever.
- Medical transport allowed a husband to be by his wife's side, holding her hand in her final moments.

## Reliving Happy Moments

Everyone should have something to smile about, especially at the end of their lives. 95-year-old **Ilona Solymossy** of Sarasota gave loving cuddles and squeals of delight to a lifelike babydoll given to her through the Wishes Fund. These therapy dolls are crafted to look as real as possible and have a remarkable comforting effect on patients. They are calming, soothing and can bring a person back to a time in their life when caring for a young family member was the #1 priority. Donations to the Wishes fund make these smiles possible!

---

**ON OPPOSITE PAGE:** Patient, **Alma Cline**, celebrated a century in September 2023, with a dozen of her friends and family, including a daughter, grandson, and great-grandson. The Wishes Fund provided her favorite cake—white with raspberry filling—ice cream, balloons, and décor; and, two new nightgowns in her favorite colors.

# Workforce Development

---

Fostering the next generation of hospice nurses, the Tidewell Hospice Nurse Residency Program is an investment in the future of compassionate hospice care.





## What We Do

End-of-life care is not often included in nursing education programs. As a specialty, hospice care requires an extra measure of knowledge. Empath Health provides structured education and training for 12 months to newly licensed nurses learning hospice philosophy and end-of-life care. Nurses work with an experienced clinical coach who teaches the specialty care of hospice and the empathy, dedication and loving support it requires. Real-life, hands-on situations are mastered in Empath's Simulation Lab.

## Why Your Support Matters

Amidst the shortage of nurses in the healthcare industry, hospice nurses are now even more important. Tidewell Foundation counts on generous donors who believe in the future of hospice and full life care.

## Your Donations At Work

Because of donors like you...

- **New nurses receive the mentoring they need to confidently help patients in their homes.**
- **Patients and their families receive the finest level of compassion, comfort and care.**
- **Recruitment of new hospice nurses is bolstered by offering such world class training, the only program of its kind in Florida and one of only a few in the nation.**



## A Student's Perspective

**Caitlin Troche Finn** always knew she wanted to be a hospice nurse. Her first experience with death was when she was 13 years old, and hospice took care of her great-grandmother. "They weren't just taking care of her, they were taking care of her family," she says. "That had a huge impact on me and inspired me to be a hospice nurse."

As a student in Tidewell's Nurse Residency Program, she is receiving specialty training for hospice care. The program's Simulation Lab helps nurses like Caitlin go through realistic scenarios for what hospice care is like for a nurse. She says, "We didn't learn a lot about hospice in nursing school. In the lab, we run through scenarios; I can make a mistake and redo it. It also prepares me for the difficult conversations I may need to have with patients."

Caitlin hopes more nurses will consider a hospice specialty. She proudly shares, "You provide care and dignity for somebody at the end of their life. Death is a part of life, and it is a beautiful experience."

# Tidewell Treasures

Donating and shopping leads to compassionate full life care for all.



[TidewellTreasures.org](https://TidewellTreasures.org)

## Sarasota Location

5441 Palmer Crossing Cir.  
Sarasota, FL 34238  
(941) 552-7555

## Venice Location

523 Venice Bypass #41  
Venice, FL 34285  
In the Bird Bay Plaza  
(941) 882-4467

**239**

Volunteers

**25,728**

Volunteer Hours  
Served

**12.4**

Full Time  
Equivalent  
Employees

**\$1,281,556**

Earned Revenue





## What We Do

Proceeds generated from Tidewell Treasures resale stores have significantly increased the Tidewell Foundation's ability to deliver free hospice care, grief and complementary services, and specialized care for veterans. Generous donations of gently used, brand name furniture and clothing, electronics, collectibles, books, music, linens, lamps, artwork and other home goods and accessories, are gratefully accepted at our two locations in Sarasota and Venice. The sales of these items allow Tidewell Hospice to continue providing tender, loving care for thousands of patients.

## Why Your Support Matters

Tidewell Foundation grants Tidewell Hospice significant funding for programs and services not covered by a patient's insurance. Donations and purchases at Treasures stores help ensure the continuum of full life care for all.

## Your Donations At Work

Because of your support...

- The resale shops ensure everyone can receive end-of-life services, despite one's ability to pay.
- Unique treasures can be found while supporting and showing your admiration for Tidewell's ongoing work.
- Volunteers help keep the stores running by greeting shoppers, sorting and pricing items, checking out customers, and much more.

## Treasures Volunteer: Terri Ledek

Meet **Terri Ledek**, one of 82 volunteers who devote themselves to the Tidewell Treasures resale store in Sarasota. Terri moved to Sarasota from California four years ago and knew immediately where she wanted to volunteer. She says, "Who is not familiar with hospice? We have all utilized hospice services; it is just a wonderful organization."

With her background in volunteering at two other donation centers out-of-state, Terri helped get the store up and running two years ago. The former neonatal nurse loves giving back, especially to a great cause. Customers often tell her how much Tidewell Hospice has helped their families. "Hospice people have such an amazing heart," she says.

Donations pour in all day long and there is a bonus to her work. "It's a rare day that I don't come home with something," she laughs.



# Tidewell Honors Veterans

The Tidewell Honors Veterans program recognizes the unique needs of veterans and their families and is compassionately tailored to those needs, providing specialized programs and services that honor and support our veterans.



**1,495**

Veterans Served

**509**

Veteran Pinning Ceremonies



## What We Do

Serving almost 1,500 veterans in our four-county region, the Tidewell Honors Veterans program recognizes the unique needs of military veterans at the end of their lives. The Tidewell Hospice program is a Level 5 Partner, the highest attainable, in the We Honor Veterans initiative, a national organization meeting the needs of veterans in hospice care. Specially trained care teams and specific support groups allow for the sharing of similar experiences, creating deep and authentic connections.

## Why Your Support Matters

Tidewell Honors Veterans program allows us to thank our veterans for the sacrifices they have made for our country and honor their distinct needs. This program would not be possible without donor and volunteer support.

## Your Donations at Work

Because of donors like you...

- 175 veterans are served daily with compassionate, loving care.
- Veteran patients are visited by specially trained volunteers, often a former serviceman or woman, who encourage the sharing of military stories as part of their overall life story.
- Pinning ceremonies are proudly offered upon request, a moving recognition of a veteran's service and sacrifice.



## Volunteers Honor Veterans' Final Missions

Tidewell Honors Veterans program relies on volunteers who currently serve or have served in the military. Air Force Veteran and Tidewell Volunteer, **Terry Purcell**, is one such veteran. Reflecting on his volunteer experiences, Terry says, "I have met some of the most incredible people—combat troops that served in World War II, a Pearl Harbor survivor, a Congressional Medal of Honor recipient and POWs."

Terry brings respect to the veteran and their family as he pays homage to them. He adds, "Everyone who puts on a uniform serves a function and a purpose, geared toward a mission. And at the end of life, where the veteran is on his final mission, they become even more important."

# Planned Giving & Ways to Give

Generosity comes in many shapes and sizes and at various times of life.





## Your Legacy is Ours

When donors leave a planned gift to Tidewell Foundation, they become part of a four-decade tradition of a legacy of care. Tidewell Foundation's Legacy Society recognizes the generosity of donors who make a gift through their estate and financial planning.

Donors can receive immediate tax benefits by providing significant charitable gifts that touch the lives of thousands. Their support ensures the future remains bright for the patients, families, and communities we serve.

### Gift Your Life Insurance

A gift of life insurance allows you to make a large gift with little cost to yourself. You can contribute a life insurance policy you no longer need or purchase a new one and name Tidewell Foundation as a full or partial beneficiary. Tax advantages can be realized.

### Gift Annuities

Creating a Charitable Gift Annuity, Charitable Remainder Trust, or Charitable Remainder Annuity Trust allows for a donation to the Tidewell Foundation that pays you income for life while minimizing your income tax.

### Gift Stocks


Donate long term highly appreciated stocks to Tidewell Foundation, receiving a tax donation and avoiding capital gains tax.

### Gift Your IRA

If you are 70 ½ or older, you can make a qualified charitable deduction (QCD) from your IRA directly to Tidewell Foundation up to \$100,000. Since it goes straight to charity, you will be donating pre-tax dollars and avoiding income tax.

### Gift A Vehicle

Gifts of tangible personal property such as a car or motorcycle can be gifted to be picked up and sold at auction. You will receive a tax receipt for your donation.



“Someone’s sitting in the shade today because someone planted a tree a long time ago.”

~ Warren Buffett

# Our Generous Donors

October 1, 2022–September 30, 2023



## Monarch Circle \$500,000–999,999 Donors

Estate of Marian Jean Bowman

## Leaders Circle \$250,000–499,999 Donors

Estate of Thomas F. McGuire

## President's Circle \$100,000–249,999 Donors

The Estate of Beverly Kieser

Semmes L. Brightman

Wyn Entis

Patricia A. Heffron\*

Estate of Lawrence Stanley  
Golbois

Estate of Robert Vasko

## Advocate Circle \$50,000–99,999 Donors

The Estate of Diane Copes

The Melvyn Weisel Revocable  
Living Trust

Marvin C. and Glenda H. Miller

The Estate of Rise' Snider  
Loshak

Estate of Sandra Jo Kifer

Kevin G. and Dana S. Smith

## Friend's Circle Donor Society \$10,000–49,999 Donors

Anonymous (6)

Mary E. Albrecht

Alltrust Insurance

Anthony Raimondo Trust

Caldwell Trust Company

Care Synergy

Estate of Charles Robert Lewis

William G. and Carol S. Clendenin

Vincent J. and Donna M. Contino

Joann Day

Dignity Memorial

Dorcas Life Hunt Estate

Estate of Doreen M. Eastwood

The Estate of Doris K. Kahmer

Frank J. Dupuis

Ferguson Skipper, P.A.

Arden K. and Lois K. Fernstaedt

Stephen W. Hall

Rosalie Hardman

The Harry Carle Lorenzen Trust

Walter Haskins

Marjorie Haun

Mildred D. John

John and Catherine Kennedy Fund

William R. and Elizabeth Johnston

Vincent M. and Margaret T. Maisto

The Estate of Maria A. Glowinski

Maroon Family Foundation at Gulf  
Coast Community Foundation

Thomas E. and Suzanne E. Marsh

Mary G. Swartz Trust

James W. Meister

Estate of Michael J. Rodney

The Northern Trust Company

Estate of Pierrette Birchall

Terry and Colette M. Purcell

Quent and Helen Evans  
Charitable Fund

Raymond and Nancy J. Swart  
Trust

Twin Towers Trading, Inc.

Joanne J. Webster

## Circle of Compassion Society \$2,500–9,999 Donors

Anonymous (10)

Academy Insurance Agency

The Allyn Foundation, Inc.

American Online Giving  
Foundation

Estate of Ann H. Johnson

Paul Arnold

Robert Arthur

Susan C. Barber

William R. Baxter

Judith T. Berlow

Blalock Walters, P.A.

BOA Sisterhood Circle #155

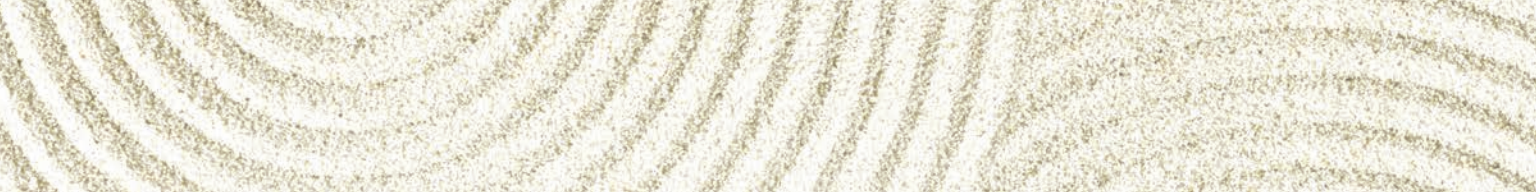
Boar's Head Provisions Co., Inc.

Samuel and Linda Bohl

W. Gary and Carole L. Booher

Boscia Family Foundation





Evelyn A. Brian	Herald-Tribune Media Group	John C. Marianne K. Moyer
The Honorable Vernon G. and Sandra J. Buchanan	Humana, Inc.	Network for Good
Kathie Butterworth-Ropele	Ian Black Real Estate LLC	Observer Media Group
Caithness Construction	iHeartMedia	Eileen Pease
Gary A. Chelec*	Debra M. Jacobs Buttaggi	Philadelphia Eagles
Robert E. Copeland	Jirout Kozlowski Family Fund	Stephen J. and Redenta Picazio
Karen Deering	Joel and Sandra Cuba Advised Fund	Michael S. Plunkett
Ann Ditullio	Estate of John and Eleanor Paltsits	Martin D. Rich
Donald Abrams and Harriet Abrams Revocable Trust	Michael J. and Sharon A. Johnson	Richard and Jean B. Bugg Fund
David M. and Hannah D'Ottavio	Ned Katterhenrich	Edward and Elyse Rogers
Dorothy Dufort	William Kemmler	Roma and Don Marshall Fund
Ed and Barbara Strobel Fund	Marianne Koerner	Alfred S. Rose
Edgewater Club, Inc.	The Lake Club Women's Giving Circle	Steven D. and Carolyn Roskamp
Catherine Emerson	Matilda F. Lang*	Rotonda Elks No. 2710
Enclara Pharmacia	Leadership Simplified	The Rowan Foundation, Inc.
Walter C. and Renee W. Eppard	David and Susan Macrae	Ruth H. Landes Fund
John A. Ernst	William A. Mann	Sarasota Ford
The Estate of Erwin Lawson	Michael and Kathleen Martella	Sarasota Magazine
Evelyn Brian Charitable Fund	Debbie Mason	Sarasota Private Trust
Ferguson Skipper Donor Advised Fund	Thomas A. McEntee	Jacob P. and Paula Sorg
Jonathan D. and Amy Fleece	Robert S. and Susie S. Melum	Stahl & Associates Insurance
Frank and Grace Tedesco Memorial Fund	Meritain Health	Staples Advantage
Franklin C. Mann Trust	James and Misdee Miller	Jeffrey P. and Ellen Steinwachs
Fraternal Order of Eagles #2756	Linwood Miller	Paul C. and Sharon A. Steinwachs
Frederick J. and Phyllis C. Bueche Fund	Jan Miller and James K. Culter	Astrid Stephan
Barry Freidenreich	Nancy C. Millett*	Thomas T. and Cynthia A. Stuhley
Letitia Griffin	Susan F. Milman	Hobart K. and Janis F. Swan
Jane R. Hazelcorn	James J. and Kathleen D. Moran	Conrad D. and Ruth Ann Szymanski
Josephine K. Hennelly	Sue L. Morey	Henry A. and Barbara Tafaro
	Charles Morse	Target Graphics, Inc.
		Jason E. Toale

Edwin E. Van Pelt  
Deborah R. Vincent  
Edris C. Weis  
Marilyn B. West  
Joan Whitehead  
Timothy K. Self and Paula Jo  
Whiting-Self  
William and Barbara Salisbury  
Endowment Fund  
Carol B. Williams  
Rosemary T. Williams  
James Winkelman  
Sharon E. Woelfling

### **\$1,000 – \$2,499 Donors**

Anonymous (22)  
1st Source Bank  
Robert J. and Shirley F. Adams  
Woodrow J. Alagood  
Carolyn W. Albrecht  
Janette S. Albrecht  
Gary and Carol Alderman  
Altec Lakes & Natural Areas, Inc.  
American Legion Auxiliary Unit  
113  
Donald T. Georgia C. Anderson  
Helen V. Anderson  
Anna Maria Oyster Bar  
Lucius Anthony  
Apollo Medical Transport  
Alexandra Armstrong  
Arrow Exterminators  
Colin and Linda Atkins  
Ronald L. Aubel  
Aviva Senior Living  
Bradley Baker

Robert and Kathryn Baker  
Baldwin Brothers Funeral &  
Cremation Svcs  
Florence Z. Banovich  
Gerald R. and Sydney F. Barkholz  
Richard K. and Donna M. Bauer  
Bayside Community Church of  
Sarasota Inc  
Eugene Beacham  
Thomas B. Bender\*  
Benderson Development  
Company  
Harry E. Bennett  
Suzanne J. Biviano  
Stewart Bolognese  
BOS Tampa  
Katheryne K. Bosse\*  
Saida J. Bouhamid  
Robert and Heather Bourgette  
Richard Bourne  
BrightView Landscape Services,  
Inc.  
Don and Nancy F. Burrer  
Sandra Burroughs  
Neva M. Burton  
Celeste Byers  
Ann B. Catts  
Michael D. Champagne  
Charitable Adult Rides & Services,  
Inc.  
Ron and Kathryn Clayton  
Terry Clements  
Larry J. and Mary Ann Colton  
Commodore Realty, Inc.  
The Community Development  
Trust

Compton and Associates  
Lynn Corcoran  
Nancy Cormack  
Mardi Coury  
Sam and Rose Crank  
Marcia Currie  
Judith A. Dannewitz  
Carlo and Rebecca C. De Rosa  
James H. Dean  
Decorative Paver Concepts  
Philip A. and Julie S. Delaney  
David and Motria Deluca  
Ruth B. Deterding  
Devitt Risse family Foundation  
David and Michele Dicke  
Richard F. Dixon  
Robert E. Dods  
Doris J. Cook Foundation  
Marvin Eastlund  
Ed and Annette Eliasberg  
Gail A. Elliott  
Karen J. Enis  
Kathy Fasbinder  
Richard Fedeli  
James Finnigan  
Thomas and Carole Fisher  
FKA Knox Family Foundation  
Joann Flanigan  
John and Cathy Forman  
John E. and Kelly Franz  
Fraternal Order of Eagles Ladies  
Auxiliary #3885  
Barbara B. Freeman  
Louis and Carol Furlong



Mary Gaffey  
Hans Gegenschatz  
Janice Gergenti  
Ricks Golf Group  
James Gorka  
Robert and Cecilia Gosling  
Leo J. Gould  
James R. and Suzanne T. Graham  
Cynthia Griffith  
Peter D. Gross  
Jo Gruenwald  
Michele Guffanti  
Gulf Coast Community Choir  
Elizabeth Hansen  
Beverly A. Harms  
HCA Florida – Sarasota Doctors  
Hospital  
David Heagerty  
Robert W. and Janet Henderson  
Laura Herlovich  
Carol Hess  
Frederick Hinesley  
W. P. Hoenle and Ursula Heitmann  
Helen Hoffman  
Josette Holmes  
Ronald E. Holsing  
Hospice of the Western Reserve  
Allen W. Hovis  
Robert Hrabovecky  
Aileen H. Hueter  
Edward Hull  
Ellis Hyman  
John S. Isherwood  
David Izenon

J. McLaughlin  
Elizabeth Jacobsmeyer  
Gregory D. and Pam Jacobson  
Jani-King of Tampa Bay  
Timothy J. Jirschele  
John B Smith Memorial Golf  
Tournament  
John R. and Carole E. Remick  
Fund  
Loretta Johnson  
Barbara A. Jones  
Carole C. Jones  
D. A. Jones  
James Jurick  
Victoria P. Kasdan  
Kays-Ponger & Uselton Funeral  
Homes and Cremation  
Services  
Key Glass, Inc  
Carole R. Kilby  
Carlene King  
Susan T. King  
Elizabeth Kitchen  
Knights of Columbus Assembly  
3192  
Stephen M. and Beth A. Knopik  
Joyce Koppel  
Karen A. Kunz  
Nathan Lane  
Lincoln Financial Group  
Live Oak RV Resort  
Marlene A. Loebig  
Jo Ann Loy  
LPGA Amateur Golf-Manatee  
Mary Lysher  
Robert Lytle

Gysele Maas  
Gerda Maceikonis  
Maceikonis Family Foundation  
Inc.  
Sandra MacLeod  
Jack Madill  
Manasota Commercial  
Construction  
Theodore Martin  
Karen L. McCarty  
Lisa McCauley  
Robert L. and Beverly A McClaflyn  
Van R. and Judith McDonald  
Stephanie D. McGowan  
Bonnie J. McIntyre  
Sandra McIntyre  
Robert P. and Sharon A. McNutt  
Susan Meddis  
Melanie G. Eckstein Revocable  
Trust  
Ruth Mendius  
Robert Merrill  
Bill and Joyce Milligan  
Fermin C. and Jodi L. Miranda  
Frederick L. and Molly M. Moffat  
Kellie Moran  
Ann L. Morgan  
Morgan Stanley  
Carolyn Morris  
Granville and Judy A. Morris  
Danielle D. Moseley  
MSL CPAs & Advisors  
Netwurx Technology Group  
Nick and Mary Lou Gigliotti  
Foundation

Richard H. and Betty A, Nimitz  
Andrew J. and Elaine R. Nutlay  
Susan P. Nye  
The Oaks Women's Club, Inc.  
Louis H. and Rosemary M.  
Oberndorf  
Betty Oldanie  
Warren B. O'Neill  
Julia A. and John D. Osborne  
Maureen Pagliuca  
Richard Paquette  
Garo Partoyan  
The Patterson Foundation Pay It  
Forward Fund  
Philip and Laurie Perkins  
Lana Perry  
Suzanne Perry  
RAKA Fund  
Susan Rawson  
Maria P. Reba  
Leah Reda  
Stacey Redmond Roberts  
Carole E. Remick  
The Resort at Longboat Key Club  
Richard and Betty Watt Nimitz  
Fund  
The Richard and Donna Bauer  
Charitable Fund  
Richard and Kimberleigh Fund  
Joseph Richter  
Cecille Riggs  
Scott T. Ritter  
Robert E. Dods Family  
Foundation  
Diane L. Roberts  
David T. Rusch

Rutledge Family Foundation  
Burton "Skip" and Gail Sack  
SageView Advisory Group, Inc.  
The Sam M. Sciturro Family  
Foundation  
Samaritan  
Sarasota Bay Club  
Sarasota Memorial Health Care  
System  
Robert and Barb Schaal  
Lawrence E. Schafer  
Schroeder-Manatee Ranch, Inc.  
William M. and Kathy R. Seider  
Joseph T. and Jaye Semrod  
Simple Generosity  
Marilyn Sirotzki  
Jon Smally  
Leonard Smally  
Elizabeth D. Smith  
Marie Smith  
Mercedes Smith  
Clarence Socia  
Source 1 Solutions  
SouthState Bank  
Stephen and Lucia S. Spotte  
Stacey Roberts Charitable Fund  
Joan M. Stancil  
Jim Stepien  
John and Valeria Stevens  
Renee G. Stevens  
StoneCastle Partners  
Mary Lou Stricker  
Vicky Swank  
Agnes Taylor  
Thomas L. Taylor

William and Judith W. Tetu  
Catherine C. Tiemeyer  
Tom and Sharon Taylor  
Charitable Fund  
Paul A. and Catherine G. Tomass  
William and Margaret O.  
Tominosky  
Christine J. Torgerson  
Helen Trinidad  
Beverly Valente  
James A. Valenti  
Richard T. Van Alen  
Erin VanderVeen  
Florence VanHowe  
Venice Implant Dentistry and  
Laser  
Venice Ranch Mobile HM  
Owners  
Venice Ranch Mobile Home  
Estates  
David C. and Monica Verinder  
David S. Vershel  
Elaine Wank-Burton  
Monroe Warrington  
Virginia Weaver  
Joan E. Weder  
Maryln Weidenhamer  
Edward J. and Annick Whitehead  
Marty Whitenack  
Whitestone Associates, Inc.  
Ann Wierdsma  
Wilbert Funeral Services, Inc  
Jeannette D. Wilkes  
Penelope S. Williams  
Williams Parker Attorneys at Law  
Lee Wingard



William E. and Cheryl A. Woeltjen  
Woodruff & Sons, Inc.  
James R. and Karen Woods  
June E. Wyneken  
Youthful Aging Home Health  
Melbourne Yull and Robyn  
Schmitt-Yull

## Foundation Supporters and Grantors

Anonymous (2)  
43rd Street Church of Christ of  
West Bradenton Fund  
Alfred Rose Foundation  
Baycross Foundation  
Bernard and Mildred Doyle  
Charitable Trust  
The Betty Garver Fund of  
the Manatee Community  
Foundation  
Bishop Parker Foundation  
Bladel Foundation  
Cannon Valley Communications  
Foundation  
Carl W. and Elaine P. Meyer Fund  
Charities Aid Foundation America  
David Vershel Charitable Gift  
Fund  
Davis Family Arts Foundation  
Edward and Elyse Rogers Family  
Foundation  
Eluned and Edward Russell  
Charitable Foundation  
Eppard Family Foundation  
The Frank J. and Lenora Dupuis  
Foundation, Inc.  
Gulf Coast Community  
Foundation

India Benton Lesser Foundation  
Hank and Barbara Tafaro  
Charitable Foundation  
Hobart K. and Janis F. Swan  
Donor Advised Fund  
Hospice of Marion County  
J. Milton & Nellie E. Hoffa  
Memorial Foundation  
Jacobson Family Giving Fund  
Jim Meister Charitable Trust  
The John Family Foundation  
Johnston Family Fund of  
the Manatee Community  
Foundation  
KBR Foundation, Inc.  
Kevin and Dana Smith Fund  
La Bont Bank of America  
Charitable Gift Fund  
Lakewood Ranch Community  
Fund  
Lang/Goldstein Endowment  
Fund  
The Libertore Fund for Children,  
Inc.  
Louis & Gloria Flanzer  
Philanthropic Trust  
Manatee Community  
Foundation, Inc.  
Manatee County Government  
The Margaret McCartney & R.  
Parks Williams Foundation  
Martin D. and Barbara H. Rich  
Family Charitable Foundation  
McCune Family Foundation  
Misdee Wrigley and James  
Mather Miller Charitable  
Foundation  
Oberndorf Charities Fund  
Perry Family Fund

Pink and Navy's Fleece Fund  
The Ralph S. French Charitable  
Foundation  
Ray and Nancy Swart Family  
Fund  
The Robert G. and Ellen  
S. Gutenstein Family  
Foundation  
Rotary Club of Lakewood  
Ranch, Inc.  
Sack Family Foundation  
SahanDaywi Foundation -  
Substation 1  
Sarasota County Foundation  
Sarasota Memorial Healthcare  
Foundation  
Service Club of Manatee  
County  
Sisterhood For Good  
Sharon & Robert Woelfling  
Fund for Charitable Giving  
Socia Foundation Inc.  
Steinwachs Family Fund  
Stephen and Lucia Spotte  
Donor Advised Fund  
Suncoast Credit Union  
Foundation  
Suncoast Hospice Foundation  
Tender Blessings Foundation  
Verinder Family Fund  
Vincent Family Charitable  
Trust  
Walter Haskins Fund, in  
memory of Stacey K. Haskins  
Wilson-Wood Foundation, Inc.

## Legacy Society

Anonymous (23)	William Geller	Lauri C. Pollack
Janette S. Albrecht, M.D.	Thomas E. Gerrity	Polly Pond
Francine Alexander	Cheryl and Tom Gibbons	Karen Price
Susan Arndt	Lawrence Golbois*	Gerry Radford
Nina Arzberger	Jack F. Greer	Marta D. Rapoport
Linda Bakonyi	Bev & Brad Hahn	James R. Roorda
Tom and Marie Belcher	Roslyn P. Haney*	Steven D. Roskamp
Larry W. Benson and Jerry D. Waterman Family Trust	Michael and Mary Jane Hartenstine	Joseph R. Rowen
David H. Bettenga	Linda A. Heg	Bob and Linda Shea
Hwa C. Beyer	Adrienne Johnson	Eva T. Slane*
John Bodenburg and Nancy Helmer	Sheryl and James Kaiser	Dr. Marlene A. Spencer
Robert Bole	John J. Kestly	Stanley P. Stephenson
Rosalind Brack	Jerry and Sondra Kuskin	Mary A. Szydowski
Theodore M. Brenkacz	Carole E. Landon	Robert L. Taflinger
Phillip Roy Brewer In Loving Memory of Melissa Sue Brewer	Michael Lefrois	Susan P. Thomas
Christy Buckley-Currie	Mrs. Barbara J. Lupoff	David F. and Nancy O. Thomson Trust
Neva Burton	Dr. Barbara Maier	R. T. Van Alen
Patricia J. Case	Joan S. and John D. Marsh	Grant and Kathy Vanderpool
George and Joyce Chase	Debbie Mason	Helen L. Vetter
Diane Chechik-Temple	Demir and Gamache Family	David Voelker
Claudia S. Christensen	Bill and Karen McCarty	Marilyn Briggs West
Joseph Cincotta	Van and Judith McDonald	Paula J. Whiting-Self
Joel S. Cuba and Sandra B. Cuba Charitable Fund	Marvin C. and Glenda H. Miller	Kenneth and Rosemarie Williams
Antonette M. Cunningham	Jan Miller	Gail S. Winchester
Robert Davies, Jr.	John and Charlene Moeckel	Clarence E. Wingard*
Jan and Bill Davis	Sue Lehmer Morey	Edith I. Winston
Neena Derf	John and Marianne Moyer	R. Todd Craig and Ronnie G. Winters
Caroline and Anthony DeSantis	Margaret Myette	Debra L. Wohlers
Howard and Ann Drazic	Alexander Nichols	Barbara G. Zdziarski
Wyn Entis	Mrs. Anne Ouchark and Mr. William F. Ouchark	David and Peggy Zimmerman
Gerda Fife	Dr. Terry L. Palls	Pamela Naff*
	Gretchen Phelan	
	Deborah Poff and Valarie Clark	

\*deceased



# Strengthen Your Future and Ours

*With a Charitable Gift Annuity*



**Did you know** that you can receive fixed payments for life by making a gift to the Tidewell Foundation? It's true. Our charitable gift annuity will pay **you** (and a survivor, if desired) a fixed dollar amount when you make an irrevocable gift to us.

## **Benefits include:**

- **If you itemize deductions, you can take an income tax charitable deduction** for part of your gift in the year the gift annuity is created. A sizable part of each gift annuity payment is also tax-free throughout your life expectancy.
- **You can now use your IRA to fund a gift that pays you.** If you are 70½ or older, you can fund a charitable gift annuity by making a one-time election of up to \$50,000 (without being taxed on the distribution) from your IRA during a single calendar year.

**California residents:** Annuities are subject to regulation by the State of California. Payments under such agreements, however, are not protected or otherwise guaranteed by any government agency or the California Life and Health Insurance Guarantee Association. **Oklahoma residents:** A charitable gift annuity is not regulated by the Oklahoma Insurance Department and is not protected by a guaranty association affiliated with the Oklahoma Insurance Department. **South Dakota residents:** Charitable gift annuities are not regulated by and are not under the jurisdiction of the South Dakota Division of Insurance.

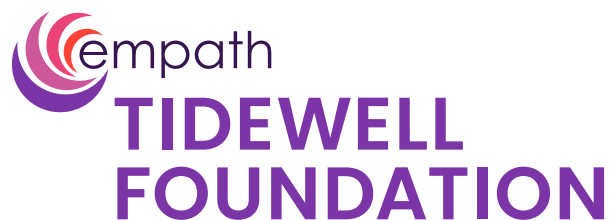
## **I Can Help!**

Delesa Morris, MS, CFRE • [delesamorris@tidewellfoundation.org](mailto:delesamorris@tidewellfoundation.org)  
Cell phone: (941) 735-7155 • Desk phone: (941) 552-7685

# Our Mission

---

**Brighten the lives of the patients, families,  
and residents of communities served  
by Tidewell Hospice and its affiliated companies  
by increasing awareness, funds, engagement, and advocacy  
to sustain and expand the exceptional programs  
and services offered.**







**Delesa Morris, MS, CFRE**, President

**Sean Allison**, Philanthropy Advisor

**Jennifer Bernthal**, Creative Services Manager

**Lorraine Constantino**, Administrative Manager

**Michelle Forbis**, Assistant Manager – Tidewell Treasures Venice

**Shannon Johnson**, Special Events Manager

**Debbie Kenny**, Manager – Tidewell Treasures Venice

**Diane Liuzzo**, Assistant Manager – Tidewell Treasures Sarasota

**Samantha McKee, ACP**, Philanthropy Advisor – Grateful Families

**Chris Pfahler, RN, BSN, CFRE**, Director of Philanthropy

**Maureen Pflug**, Assistant Manager – Tidewell Treasures Sarasota

**Larry Richards**, Philanthropy Data Specialist

**Carrie Smith**, Assistant Manager – Tidewell Treasures Venice

**Nicole Taylor**, Philanthropy Advisor for Data Management

**Megan Wenger, CFRE**, Senior Philanthropy Advisor

**Jamie White**, Manager – Tidewell Treasures Sarasota



Tidewell Foundation is grateful to our sustaining annual corporate partners for their ongoing sponsorship of the Foundation's work.

#### **Sustaining Annual Corporate Partners**

Partner in Excellence



Partner in Compassion





## Tidewell Foundation Headquarters

3550 S. Tamiami Trail  
Sarasota, FL 34239

(941) 552-7546

[Giving@TidewellFoundation.org](mailto:Giving@TidewellFoundation.org)

EIN 85-0729071

[TidewellFoundation.org](https://TidewellFoundation.org)

•••

[Tidewell.org](https://Tidewell.org)

855-Tidewell (855-843-3935)



The Tidewell Foundation, Inc. is a registered 501(c)(3) non-profit corporation. A copy of the official registration and financial information may be obtained from the division of consumer services, by calling toll-free 1-800-435-7352 (or 1-800-352-9832 en español) or going on the department's website [www.FloridaConsumerHelp.com](http://www.FloridaConsumerHelp.com).

Registration does not imply endorsement, approval, or recommendation by the state. One hundred percent (100%) of the donation is received by the Tidewell Foundation, Inc. Charitable Solicitation Registration #CH63240.