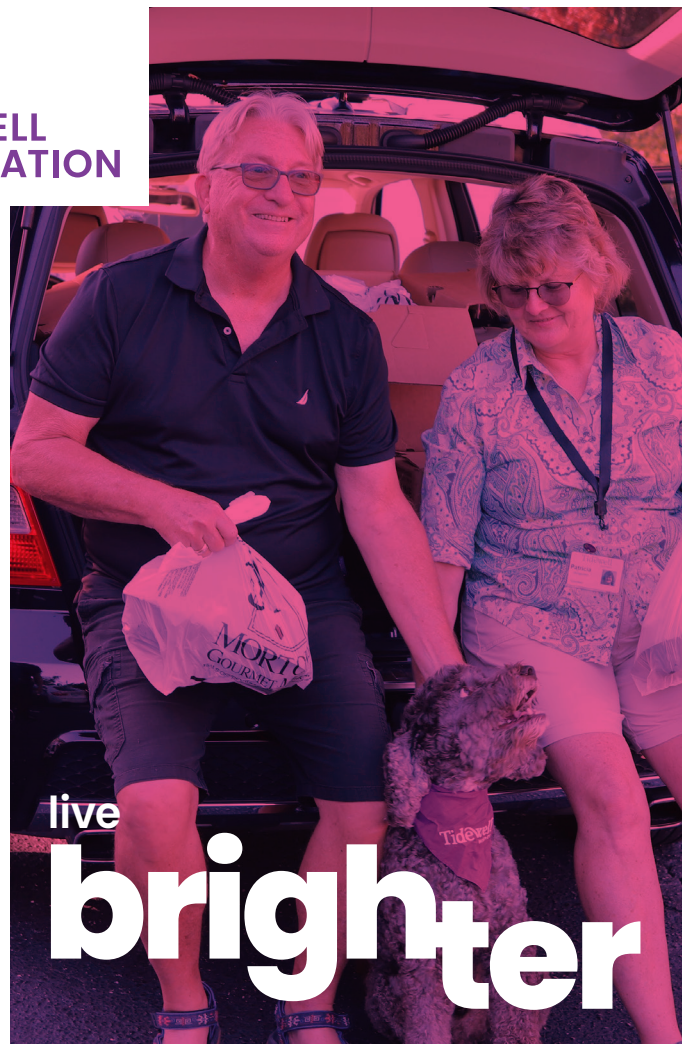




Community Impact Report

Fiscal Year 2025



live brighter

OUR MISSION

Brighten the lives of the patients, families, and residents of communities served by Tidewell Hospice and its affiliated companies by increasing awareness, funds, engagement, and advocacy to sustain and expand the exceptional programs and services offered.

4

Florida Counties
Served

3,794

Total
Donors

\$5,376,000

Grants to Tidewell
Hospice and Empath
Health Affiliates

\$7.4M

Total
Revenue



ON THE COVER (left to right, top to bottom)

Delesa Morris, Tidewell Foundation President, Barbara Glanz, Tidewell Foundation Board Member, Blue Butterfly Program Participant, Tidewell Music Therapist Ethan Howland and Blue Butterfly Participant, Tidewell Volunteers for Thanksgiving Meal Drive.

Dear Friends and Partners,

At the Tidewell Foundation, our purpose is rooted in a simple yet profound belief: every individual deserves comfort, dignity, and compassion through every chapter of life. Guided by empathy and a commitment to Full Life Care, Fiscal Year 2025 was a powerful reflection of what is possible when a community comes together to brighten lives with heart, purpose, and generosity.

Your support also helped us invest in care that will endure for generations. We established two new endowments to provide lasting, perpetual support for hospice programs and services, ensuring that comfort, dignity, and connection remain available to families long into the future. In addition, grant support is helping expand Empath Life and deepen our ability to keep individuals living safely in their homes.

We were honored when Empath Health was named the inaugural recipient of the Outstanding Community Partner Award by the International End of Life Doula Association. This national recognition celebrates the End-of-Life Doula program funded by the Tidewell Foundation—an initiative that reflects our belief that empathy, presence, and compassion are essential to care at life's most tender moments.

Throughout the year, generosity showed up in countless ways. More than 2,500 donated items were collected through our Linens and Love Drive, expanding comfort for patients while engaging corporate and community partners. With your help, over 500 Thanksgiving meals were delivered to hospice patients and their families across Sarasota, Charlotte, Manatee, and Desoto counties, creating moments of connection and gratitude during the holiday season.

Our signature events—the Signature Luncheon and the Remembrance Walk—welcomed hundreds of community members, uniting supporters around a shared commitment to remembrance, compassion, and hope.

To our donors, volunteers, sponsors, and partners: your belief in this mission fuels every life we touch. Together, through empathy and generosity, we are brightening lives and building a future where Full Life Care ensures no one ever walks their journey alone.

With heartfelt gratitude,



A handwritten signature in blue ink that reads "Delesa Morris".

Delesa Morris, MS, CFRE
President, Tidewell Foundation



Board of Trustees

OCTOBER 1, 2024 – SEPTEMBER 30, 2025



Thomas Stuhley
Chair



Jason Toale
Vice-Chair



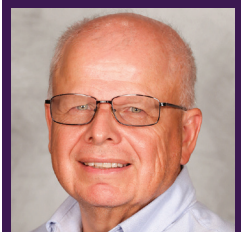
Kory Lee
Treasurer



Victoria Kasdan, RN, MPH
Secretary



Judith Berlow
Board Member



Gary Butler
Board Member



Dan Deems, MD, PhD
Board Member



Renee Eppard
Board Member



Jan Miller
Board Member



Barbara Glanz
Board Member



Delesa Morris,
MS, CFRE
President,
Tidewell
Foundation



Jonathan D. Fleece, JD
President & CEO,
Empath
Health

Brightening Lives Together.

The Tidewell Foundation is committed to supporting compassionate full life care for everyone in our community who needs it. With support, we can assure a wider embrace of services for all.



brightening lives



Shop, Donate, Volunteer. Tidewell Foundation brightens lives through donations from our Tidewell Treasures resale shops.



Sarasota Tidewell Treasures

5441 Palmer Crossing Circle
Sarasota, FL 34238

Hours: Monday – Saturday 9 a.m. – 5 p.m.

Phone: 941-552-7555

Venice Tidewell Treasures

523 Venice Bypass #41
Venice, FL 34285 (In the Bird Bay Plaza)

Hours: Monday – Saturday 9 a.m. – 5 p.m.

Phone: 941-882-4467



Tidewell Foundation

BRIGHTENING LIVES IN THE COMMUNITY

Compassion, comfort, and care are woven into everything the Tidewell Foundation does. As the philanthropic heart supporting Tidewell Hospice and Empath Health affiliates, the Foundation wraps its arms around families during life's most challenging moments. Through the kindness of generous donors, services are available to everyone, regardless of their ability to pay.

This year, nearly **3,800 donors contributed \$7.4 million** to sustain and grow programs that touch lives daily. The Foundation champions innovative services that go well beyond traditional medical care. Programs include music, art, and massage therapies to nurture mind, body, and spirit, the Blue Butterfly Family Grief Program to help children and their families heal after the death of a loved one, and Tidewell Honors Veterans to provide heartfelt recognition of those who have sacrificed and served our country. Grief counseling is also available for anyone in need.

A wonderful milestone arrived through the **Bishop-Parker Foundation's generous \$350,000 grant**, which helped launch the Empath LIFE Center (Living Independently For the Elderly). This facility welcomes individuals ages 55+ in Sarasota and Manatee Counties, providing transportation to the Center, medical care, nutritious meals, therapeutic services, medication support, and personal attention within a vibrant, activity-filled environment.

The Foundation also celebrated the creation of **two named endowments**, ensuring lasting support for generations to come.

Support flows from many sources: the beloved Tidewell Treasures resale stores, inspiring events like the Annual Signature Luncheon and Tidewell Walk, thoughtful planned gifts, corporate partnerships, and touching memorial tributes. Year-round, the Foundation celebrates its donors and volunteers, sharing meaningful stories of the lives they've brightened.

Every gift truly matters – to anxious families seeking answers, to patients needing comfort, to grieving children looking for hope, and to veterans who are deserving of so much respect. Thanks to Tidewell Foundation donors and volunteers, compassionate care and emotional support are always within reach.



Community Impact

TIDEWELL FOUNDATION



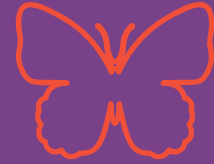
\$1,161,747

Charity Care
and Hospice Houses



\$51,000

Tidewell Honors
Veterans



\$714,831

Tidewell Blue
Butterfly Program



\$1,370,571

Community Grief and
Hospice Grief



\$122,251

Cardiac Care
Program



\$703,032

Nurse Residency
Program



\$533,121

Integrated Services
Including Doula



\$335,000

Palliative Care



\$63,000

Pediatric
Hospice Care

Featured Events

REMEMBRANCE WALK

More than 300 people gathered on **November 9, 2024** to walk and honor the memories of loved ones at the Tidewell Remembrance Walk, presented by Acrisure. Tidewell Foundation president, Delesa Morris, welcomed attendees and gave awards for participation and fundraising. A Blue Butterfly Program participant touched hearts as she sang the bittersweet sounds of “Somewhere Over the Rainbow,” accompanied by a Tidewell music therapist.

The event at Nathan Benderson Park included a variety of informational booths, food trucks, and music. Proceeds from the event went towards the meaningful services and hospice care the Tidewell Foundation funds.

THANKSGIVING MEAL DRIVE

On **November 27, 2024** the day before Thanksgiving, Tidewell Foundation volunteers and staff brought holiday cheer to more than 500 hospice patients and their families across Manatee, Sarasota, DeSoto, and Charlotte counties. Each household received ready-to-heat turkey dinners, allowing families to focus on precious moments together rather than the stress and expense of meal preparation.

Now in its fifth year, the Thanksgiving Meal Drive recognizes that for many recipients, this holiday meal may be their last shared with loved ones. By removing the burden of cooking, the program creates space for families to savor meaningful time together.

This heartfelt initiative was made possible through the generosity of individual donors and valued community partners, including Morton’s Market, the Venice Yacht Club, and Michael’s on East and is done annually.

TEA WITH TIDEWELL SPEAKER SERIES

The Tea with Tidewell Speaker Series **launched in February 2025** with Dr. Dan Deems, M.D., PhD, who shared valuable health strategies for “Improving Your Healthspan at ANY Age.” His presentation emphasized practical approaches to wellness that benefit individuals at every stage of life.

In March, attendees explored the breadth of Tidewell’s grief support services through a panel discussion featuring Lore Caldwell, Crystal Jaramillo, and Carly Weiss. These grief care specialists illuminated how the program supports community members navigating loss – both during a loved one’s illness and throughout the healing journey that follows.

Each gathering combined meaningful education with warm hospitality, as guests enjoyed elegant finger sandwiches, scones, and hot teas from Michael’s on East. The series continues to provide our community with expert insights on health, healing, and compassionate care.

LINENS AND LOVE

New, fresh linens offer hospice patients a simple yet profound comfort during their care. Through the annual Linens and Love drive, a partnership between the Tidewell Foundation and Dignity Memorial, the community rallied to meet this essential need in 2025.

The response was overwhelming. Throughout the month of March, generous donors contributed 2,485 new linens, including the critical Extra Long Twin sheets designed to fit hospital beds. Nearly \$4,000 in financial donations enabled the purchase of supplemental items to ensure every patient's needs could be met.

This initiative's success reflects the compassion of our community, who supported the drive through donated linens, purchases from the Amazon wish list, and monetary contributions. Together, these efforts ensure that Tidewell Hospice patients experience dignity and comfort in their daily care.

16TH ANNUAL SIGNATURE LUNCHEON

The Tidewell Foundation's 16th Annual Signature Luncheon took place on **Friday, March 7, 2025**, featuring colorful butterflies, moving testimonials, and meaningful insights. Co-chairs Julie Delaney and Kathy Martella welcomed over 450 guests to The Ritz-Carlton Sarasota, to learn about the impact of programs the Tidewell Foundation makes possible. Dr. BJ Miller, a globally renowned advocate for holistic well-being and resilience, shared his message about living a full life and embracing vulnerability to find strength.

Delesa Morris, president of the Tidewell Foundation and Jonathan Fleece, president & CEO of Empath Health addressed the crowd, and Melissa Caldwell of Caldwell Trust Company, the Exclusive Signature Sponsor, made heartfelt remarks. The event raised \$315,500 for Tidewell Hospice and Empath Health services, which brighten the lives of more than 10,000 people annually in Charlotte, DeSoto, Manatee and Sarasota counties.

METAMORPHOSIS: A GOURMET SOIREE

On **March 27, 2025**, the Tidewell Foundation hosted "Metamorphosis: A Gourmet Soiree" at the Family Grief Center in Ellenton. This interactive evening was the first of its kind held on campus, blending cuisine and community in support of the Blue Butterfly Family Grief Program.

Guests participated in a hands-on culinary adventure, preparing a gourmet meal at their tables under the instruction of acclaimed chefs from Michael's on East. Funds raised through this event enabled the program to provide comforting teddy bears to each child, facilitate shared meals that strengthen bonds during group counseling sessions, and expand access to specialized individual therapy for adolescents processing grief. These resources represent just a portion of the comprehensive support the program offers to families during their most difficult journeys.

COMMUNITY EVENTS Supporters across our community brought compassion to life through gatherings held in honor of loved ones and in support of hospice care. The 7th Annual Chad Day Memorial Fishing Tournament raised vital funds while celebrating Chad's life and legacy. Events such as Sip and Shop, at J. McLaughlin, and Edgewater Club Hospice Night further reflected a community coming together to care for one another.

Empath Health

VISION, MISSION + VALUES

VISION

Redefine healthcare as Full Life Care.

MISSION

Unified in empathy, we serve our communities through extraordinary Full Life Care for All.

VALUES

- Eternally Hopeful
- Profoundly Helpful
- Lovingly Truthful
- Courageously Impactful
- Confidently Skillful

FULL LIFE CARE

With empathy at the core, we provide a personalized and connected healthcare experience—delivering extraordinary care in the place you call home.



Dear Friends in Mission,

Fiscal Year 2025 showed what Team Empath can do together. We stretched our mission, reached more people across the continuum, and strengthened the foundation that supports Full Life Care for All. We kept care local and reliable while sharing tools and expertise across our programs and our nation.

This year, we opened Empath LIFE in Manatee County to bring the PACE model to more seniors who want to remain at home. We hosted our first Empath Physicians Summit to align standards, education, and innovation. We also migrated our hospice and home health divisions to Homecare Homebase, ensuring patient electronic medical records are accessible across the continuum and enhancing standardization essential to our One Hospice, high-quality model of care.

Our caregivers earned national recognition for care that supports people living with heart failure. We strengthened local leadership through regional Hospice Presidents and advanced a unified philanthropy strategy so donor funds can support services that payors do not cover. I also testified before Congress to support home based care and keep the focus on patients, families, and the clinicians who serve them.

These accomplishments matter because they ensure that every patient, family, and colleague experiences what makes Empath unique: care that goes beyond treatment to honor the whole person. Each advancement, partnership, and innovation strengthens our ability to deliver compassion at scale while keeping connection at the center of all we do.

In the year ahead, we will keep expanding access, investing in our people, and improving the systems that make excellent care possible. With your partnership, we will keep stretching our mission to every neighbor who needs us.

Yours in Mission,



Jonathan D. Fleece, JD
President & CEO, Empath Health



Empath Health

BY THE NUMBERS

Empath Health experienced remarkable growth this year, driven by a deliberate focus on integration, operational excellence, and uniting in care across our programs rather than expansion through mergers or acquisitions. Census and revenue increased across Empath, with more families than ever turning to us for Full Life Care.

Our colleagues delivered tens of thousands of visits in homes, care centers, and day programs, while volunteers gave countless hours to ensure that patients and families did not feel alone. We also expanded access to care through new partnerships, outreach initiatives, and community-based programs that reach people earlier and support them more fully. These numbers reflect steady, meaningful growth—built on trust, reputation, and the unwavering consistency of our care.

Together, these efforts made Fiscal Year 2025 one of Empath's most impactful years yet.

20
FLORIDA COUNTIES

4,000
VOLUNTEERS

3,800
COLLEAGUES

99,000
LIVES SERVED

\$14.8M
CHARITABLE CARE

\$593M
TOTAL REVENUE



MISSION ADVANCEMENT

EMPATH HEALTH ON CAPITOL HILL

On March 11, 2025, Jonathan Fleece, President and CEO of Empath Health, testified before the US House Ways and Means Health Subcommittee on Health during a hearing on access to postacute care. Speaking on behalf of patients, families, and care teams, Jonathan made the case for stronger support of care delivered in the home.

“Home-based care isn’t just for those at the end of life,” Jonathan said. “It supports people managing chronic illness, recovering from surgery, and navigating terminal diagnoses. Patients want it, families need it, and taxpayers benefit.”

He emphasized that hospice allows people to remain at home and out of the emergency room and hospital, improving quality of life while reducing costs. Jonathan urged lawmakers to protect access and focus oversight on bad actors without burdening providers who are doing the right work. “These are not just policy decisions,” he reminded the subcommittee. “They are urgent matters of access, quality, and patient choice.”

Empath is grateful to the National Alliance for Care at Home for its partnership and to Representative Vern Buchanan for his leadership and confidence in our mission. This testimony reflects not just one organization’s perspective, but the collective voice of providers committed to keeping care local, compassionate, and accessible.



BLUE BUTTERFLY

329

Children

516

Lives Served

195

Caregivers

11

Number of
Schools Trained

98

Number of Children
Served in Schools



BLUE BUTTERFLY
Grief Care

Tidewell Story

BLUE BUTTERFLY

Our approach provides specialized grief support for children and teens ages 5-18 who have experienced the death of someone significant in their lives. This comprehensive program creates a safe, nurturing environment where young people can express their feelings, develop healthy coping strategies, and honor their loved one's memory. Caregivers also receive essential tools and support to help both themselves and their grieving children.

YOUR DONATIONS AT WORK

Specially trained staff deliver evidence-based therapy tailored to each child's developmental needs, fostering resilience and healthy emotional growth:

- Children learn healthy coping mechanisms that prevent harmful behaviors such as substance abuse, self-harm, and suicide.
- Young participants connect with peers who understand their experience of loss.
- Families work through emotions together in a supported therapeutic environment.
- School-based programs bring grief support directly to students in educational settings.

WHY YOUR SUPPORT MATTERS

Children and teens process grief differently than adults, often struggling to understand and express their complex emotions. Without appropriate support, grief can create lasting difficulties in school, at home, and in relationships. Your donations ensure that the Blue Butterfly Program remains free for all families, providing the specialized care young people need to heal and build emotional resilience for their future.



Growing Care, Growing Courage

2025 was a milestone year for the Blue Butterfly Family Grief Program, which hosted its first "Camp Blue Butterfly." The weekend retreat, held September 5-7, 2025, served 44 children and teens (ages 9-17) coping with the death of a special person in their lives. Thanks to donor support, this experience was provided at no cost to the families.

Lendy Chapman, Children's Grief Educator with the Blue Butterfly program, was part of the team that planned and facilitated the weekend's activities. She shared about one camper who started out quiet and reserved but began engaging in the small group setting. "The group of his peers validated his feelings and he opened up," Chapman said. "It was beautiful to see."

In addition to the overnight camp, the program expanded its reach in 11 area schools, providing services to nearly 100 local children. These services would not be possible without caring donors and community partners. Together we are guiding children and families toward a brighter future of hope and healing.

CHARITY CARE

679

Number of Hospice
Patients Served

192

Complementary
Therapy Visits

1,307

Spiritual
Counselor Visits

1,897

Social Worker
Visits

1,457

Physician
Visits

3

Bereavement
Counselor Visits

5,547

Skilled Nursing
Visits

OUR APPROACH

Tidewell Foundation ensures compassionate hospice care is accessible to everyone, regardless of their financial circumstances. When Medicare, Medicaid, or private insurance doesn't fully cover essential services, the Foundation bridges the gap. This support includes medical care, specialized equipment, complementary therapies, and counseling services that bring comfort during life's most challenging moments.

YOUR DONATIONS AT WORK

Your generosity removes financial barriers and allows families to focus on what truly matters – spending meaningful time together. Because of donors like you:

- Patients without Medicare eligibility still receive comprehensive hospice services.
- Parents caring for a terminally ill child can remain present without the weight of financial stress.
- Elderly patients access pain and anxiety relief through therapies not covered by insurance, including music, art, and pet therapy.
- Families continue receiving essential hospice support even when insurance coverage is lost due to caregiving demands.

WHY YOUR SUPPORT MATTERS

Terminal illness brings enough hardship without adding financial burden. Your compassionate giving ensures that every patient receives the care they deserve, experiencing comfort, dignity, and peace. Through your support, families can treasure each precious moment together, knowing their loved one's needs are met with excellence and compassion.



GRIEF SUPPORT

3,625

Hospice Grief Support Sessions

626

Hospice Grief Individuals Served



OUR APPROACH

Tidewell Foundation funds comprehensive grief support services throughout its four-county region, providing counseling and support groups that help individuals navigate loss and rediscover hope. As the area's largest grief care program, specialized services are offered at dedicated grief centers and community locations, making support accessible to everyone – not just families of Tidewell patients.

YOUR DONATIONS AT WORK

Through your generosity, Tidewell Foundation makes grief support available to anyone who needs it across our four-county community:

- Specialized support groups connect individuals who share similar loss experiences.
- Professional counseling is available both in group settings and one-on-one sessions.
- Licensed counselors utilize evidence-based therapeutic approaches, including Accelerated Resolution Therapy (ART) for trauma.
- Comprehensive strategies help people process serious illness diagnoses, cope with death, and move forward with renewed purpose.

WHY YOUR SUPPORT MATTERS

Grief can feel isolating and overwhelming, especially without support. Your generosity ensures these vital services remain available at no cost to anyone in our community. As more individuals seek help, your compassion allows us to expand support groups and provide advanced training for counselors. Because of you, those walking through their darkest days are met with hope, healing, and the comfort of knowing they are not alone.

TIDEWELL TREASURES

85

Volunteers at Sarasota
Tidewell Treasures Location

SARASOTA

5441 Palmer Crossing Circle
Sarasota, FL 34238
941-552-7555

122

Volunteers at Venice
Tidewell Treasures Location

VENICE

523 Venice Bypass #41 (Bird Bay Plaza)
Venice, FL 34285
941-882-4467



Tidewell Story

OUR APPROACH

Each Tidewell Treasures resale shop (one in Venice and in Sarasota) serves as a community hub where compassion meets commerce. These stores offer quality furniture, jewelry, accessories, and household items at affordable prices while generating vital funds for Tidewell Hospice programs. Dedicated volunteers create welcoming shopping experiences while ensuring donated items find new homes.

YOUR DONATIONS AT WORK

Infused with fresh energy in our fiscal 2025 year, Tidewell Treasures stores generated \$1,466,000 to support essential Tidewell Hospice services. These funds ensure individuals receive critical care regardless of financial circumstances:

- Every purchase and donation directly funds programs like music and art therapy.
- Quality donated items receive new life while supporting compassionate end-of-life care.
- Community members access affordable household goods while contributing to meaningful mission work.

WHY YOUR SUPPORT MATTERS

When you donate items or shop at Tidewell Treasures, you participate in a powerful circle of giving. Each transaction – whether dropping off gently used treasures or discovering new ones – directly supports hospice programs that change lives. Your involvement helps ensure that quality end-of-life care remains accessible to everyone in our community who needs it.



Ten Years of Giving Back

As he sorts donations and jokes with fellow volunteers at the Tidewell Treasures resale store in Venice, John Bressler's enthusiasm for the role is undeniable. Though his late wife, Julie, initially encouraged Bressler to join her in helping at the store, it was a perfect fit for his experience that included former retail store manager. As a veteran who proudly served his country, Bressler has served the community in a different capacity for the last 10 years – and counting.

"I love what I'm doing!" said Bressler, who will celebrate his 90th birthday this summer. With a doctorate in counseling and a previous role as a pastor, it's no surprise he enjoys engaging with the people he sees during his shifts three days per week.

Bressler's story demonstrates the multi-faceted impact the Tidewell Treasures resale stores have in the community. Not only do they generate revenue to ensure meaningful services are available for those in need, but they provide welcoming environments that brighten the lives of volunteers and customers alike.

INTEGRATED SERVICES

2,433

Music Therapy
Visits

656

Music Therapy
Patients Served

927

Pet Therapy
Visits

876

Massage Therapy
Visits

249

Massage Therapy
Lives Served

OUR APPROACH

Tidewell Foundation funds clinically-proven integrative therapies that enhance quality of life beyond traditional medical care. These services address the physical, emotional, and spiritual dimensions of advanced illness. Certified therapists assess each patient's unique needs and capabilities to provide personalized therapeutic experiences, including pet therapy, massage therapy, expressive arts, and music therapy.

YOUR DONATIONS AT WORK

Your support creates meaningful, comforting experiences that ease suffering and bring joy to difficult days:

- Music therapy helps patients create personalized songs incorporating their heartbeat or meaningful lyrics for loved ones.
- Expressive arts programs allow emotional expression through projects like memory boxes, quilts, and paintings.
- Pet therapy provides the healing presence of therapy animals, reducing stress and enhancing emotional well-being.
- Massage therapy offers gentle, therapeutic touch that alleviates physical discomfort and promotes relaxation.

WHY YOUR SUPPORT MATTERS

These therapies provide profound comfort when patients and families need it most. Your generosity ensures access to services that reduce anxiety, manage pain, and create treasured memories during the end-of-life journey. Every donation brings warmth, connection, and personalized care that honors each patient's unique spirit and provides solace to their loved ones.



EMPATH LIFE

20+
Participants

100%
Comprehensive Care



OUR APPROACH

Home is the ultimate comfort – surrounded by familiar belongings and cherished memories. For older adults, however, living alone can also be lonely and pose health risks, such as falling when no one is there to help. Thankfully, for adults aged 55+ in Manatee and Sarasota Counties, the Empath LIFE (Living Independently For the Elderly) program is now available. Opened in early 2025, the Bradenton location offers participants a circle of care that honors their independence while providing everything they need to thrive. From attentive primary medical care and rehabilitation to heartfelt social services, reliable transportation, and compassionate home-based support, Empath LIFE ensures no one has to choose between the care they need and the home they love.

YOUR DONATIONS AT WORK

The launch of Empath LIFE in Bradenton is a testament to the impact of caring hearts uniting for a common purpose. Generous individuals and dedicated partners created something truly special for older adults in our community. Funds from community partners, the Tidewell Foundation, and a remarkable grant of \$350,000 from The Bishop-Parker Foundation strengthened on-site medical services. Today, participants receive seamless care coordination that keeps them in their homes, close to the families who love them and the communities where they've built their lives.

WHY YOUR SUPPORT MATTERS

The Empath LIFE program has become a shining example of what's possible when innovation meets compassion. Your generosity brings Full Life Care to more neighbors throughout Manatee and Sarasota counties, ensuring that the seniors who have given so much to our community can age with dignity, surrounded by everything and everyone they hold dear. Together, we're weaving a safety net of love and support that allows individuals to flourish at every season of life.

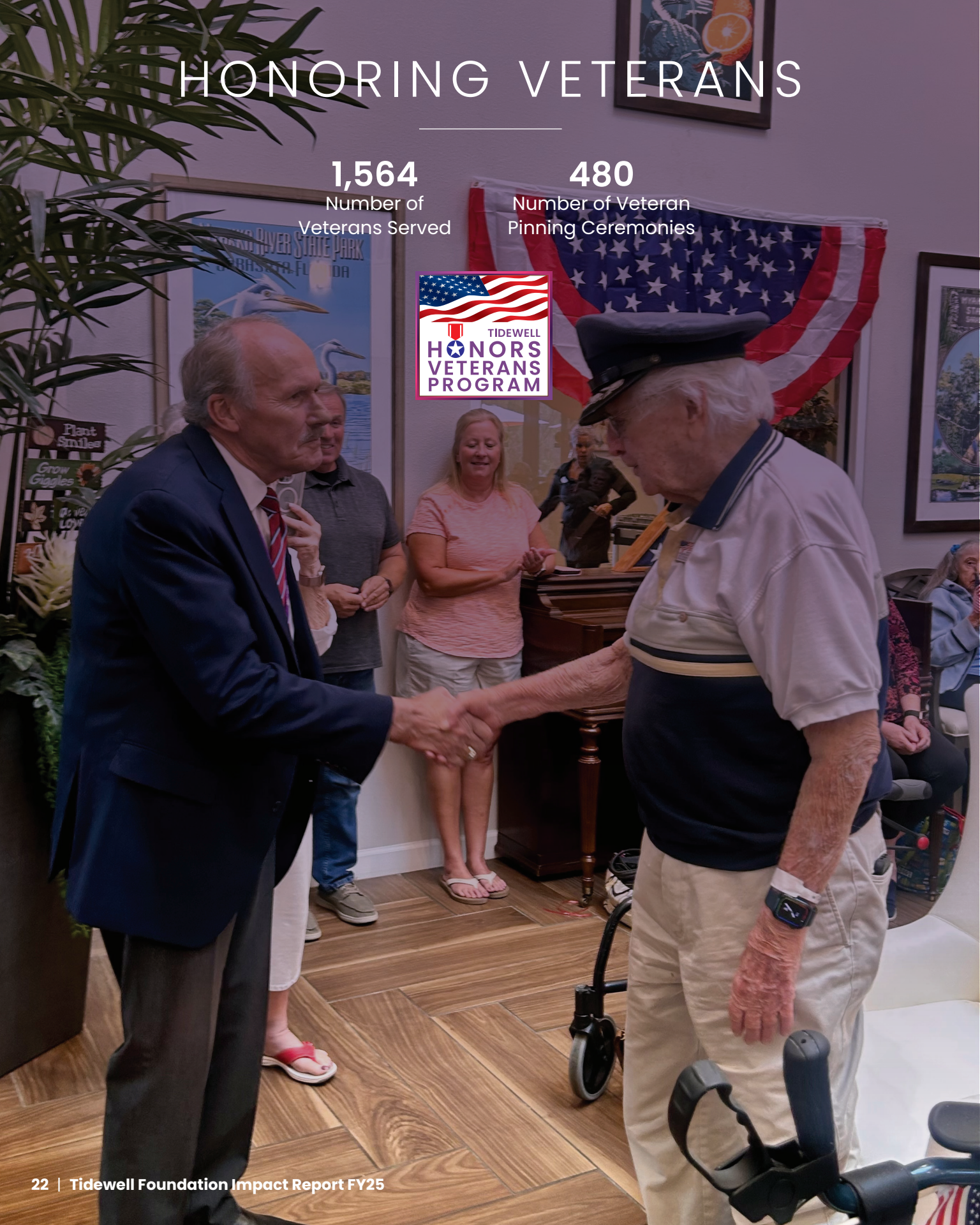
HONORING VETERANS

1,564

Number of
Veterans Served

480

Number of Veteran
Pinning Ceremonies



Tidewell Story

OUR APPROACH

The Tidewell Honors Veterans Program provides specialized hospice care that recognizes and addresses the unique needs of military veterans at end of life, serving those who served us. The team's Level 5 Certification (the highest standard from the national "We Honor Veterans" organization), ensures they understand military service experiences and their impact on end-of-life care. Services include tailored support groups, meaningful pinning ceremonies, and personalized recognition of veterans' service and sacrifice.

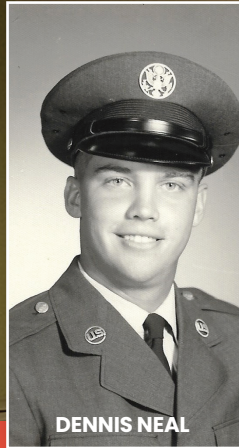
YOUR DONATIONS AT WORK

Donor contributions enable hundreds of area veterans to receive the recognition and specialized care they deserve:

- Heartfelt pinning ceremonies honor veterans in assisted living facilities, long-term care communities, and private homes.
- Veteran volunteers with shared military experience provide peer support and understanding.
- Community events, including the Red, White, and Brave, celebrate veterans in the local community and their significant contributions.

WHY YOUR SUPPORT MATTERS

Few people know service and sacrifice quite like a veteran. Just as our veterans have taken care of us, Empath Health is committed to taking care of them through our Veterans Program. Your generosity connects veterans in hospice care with trained volunteers who truly understand their experiences. Through your support, the Tidewell Foundation makes sure no veteran is forgotten, offering them the recognition, dignity, peace, and connection they deserve during their final journey.



Tidewell Honors Veterans

For Air Force veteran Dennis Neal, pinning ceremonies through the Tidewell Honors Veterans program create moments of profound connection – a chance to look fellow service members in the eye and say the words they deserve to hear: "Thank you for your service."

Over the past four years, Neal has recognized veterans from World War II, the Korean and Vietnam wars, and peacetime service. Each ceremony is unique. Sometimes it's an intimate moment between two veterans. Other times, entire communities gather at assisted living facilities to honor multiple service members at once.

Recently, Neal met a veteran nearing his 103rd birthday. At another ceremony, five generations came together for the recognition event.

"It's fulfilling in a number of ways," Neal said. "I stay active, meet new people, and help give veterans the honor they've earned."

The program continues to seek veteran volunteers who understand the special bond forged through service.

To learn more, visit the "Impact Areas" section at tidewellfoundation.org.

CARDIAC CARE

1,040
Lives Served

OUR APPROACH

The Cardiac Care Program at Tidewell Hospice delivers specialized end-of-life care for patients with advanced heart disease, enabling them to remain at home surrounded by loved ones. This year, Tidewell Hospice became certified under the American Heart Association Palliative/Hospice Heart Failure Certification, confirming that the program meets rigorous national standards for quality, safety, and coordinated treatment for patients living with heart failure. Our skilled nursing team collaborates closely with patients' private physicians and Empath Palliative Care physicians, providing therapies that minimize disruptive hospital visits and maximize comfort in familiar surroundings.

YOUR DONATIONS AT WORK

Donor contributions make meaningful differences in the lives of cardiac patients and their families:

- A "high-touch" clinical approach enables rapid response to health changes, preventing unnecessary pain, suffering, and hospitalizations.
- Comprehensive one-on-one family education equips caregivers with knowledge and resources to navigate complex health needs confidently.
- Cardiac care comfort kits provide essential medications that help maintain patient safety and comfort at home.

WHY YOUR SUPPORT MATTERS

The Cardiac Care Program demonstrates the power of compassionate, coordinated care. Your support ensures that patients with complex cardiac diagnoses can remain home as long as possible, receiving not just medical expertise but also the comfort of familiar surroundings and the dignity of being with family. Your generosity provides heartfelt care when it matters most.



NURSE RESIDENCY

10

Nurse Residents

2

Clinical Coaches



OUR APPROACH

The Tidewell Nurse Residency Program prepares the next generation of hospice nurses through an intensive 12-month training experience, which includes classroom education and realistic scenarios in a state-of-the-art simulation lab. To expand the program reach, a new initiative with State College of Florida was established to create a pathway into careers in hospice and home-based care using the LINE (Linking Industry to Nursing Education) Fund. These efforts demonstrate the Tidewell Foundation and Empath Health's commitment to creating a sustainable nursing workforce and a path for nurses who want to combine clinical excellence with compassion.

YOUR DONATIONS AT WORK

The program elevates hospice nursing as a distinguished career specialty, preparing nurses to deliver exceptional end-of-life care:

- Simulation lab training replicates real-world situations nurses encounter in patients' homes and care facilities.
- Residents learn to educate and prepare families for their loved one's end-of-life journey.
- Training integrates clinical expertise with social-emotional skills for comprehensive patient care.
- Nurses master symptom management and coordination of complementary services like music, art, and pet therapy.

WHY YOUR SUPPORT MATTERS

Your generosity makes it possible for experienced preceptors to guide and mentor new nurses through meaningful, hands-on learning experiences. Because of donor support, the Nurse Residency Program achieved a historic milestone by becoming the first hospice-only residency accredited by the American Nurses Credentialing Center Commission. This distinguished national recognition strengthens the future of hospice nursing, inspires the next generation of caregivers, and ensures expert mentorship continues to shape compassionate care for years to come.

CREATING LEGACIES

For almost 45 years, caring donors have chosen to include the Tidewell Foundation in their estate plans, creating a lasting legacy of compassion that extends far beyond their lifetime. The Legacy Society celebrates these remarkable individuals whose foresight and generosity ensure that essential hospice services remain available for generations to come.

When you make a planned gift to the Tidewell Foundation, you're doing more than supporting vital programs – you're providing immediate tax advantages while creating a meaningful contribution that will touch countless lives. Your thoughtful planning ensures uninterrupted access to expert hospice care, grief support, and integrative therapies, bringing comfort and dignity to patients, families, and communities in the years ahead.

We're grateful for every donor who chooses to leave a legacy of care.

To learn more about planned giving opportunities, please contact Valerie Vitale, LCSW at ValerieVitale@tidewellfoundation.org.



Tidewell Story

GIVE FROM YOUR IRA

Despite recent tax changes, donations from IRAs remain a powerful charitable giving tool for those at age 70½ or older. You can gift a qualified charitable deduction (QCD) directly to the Tidewell Foundation – up to \$111,000 for tax year 2026 (increasing from \$108,000 for 2025). This allows you to give with pre-tax dollars while avoiding income tax, making it an extremely tax-efficient way to support the causes you care about deeply.

GIFT YOUR LIFE INSURANCE

Transform a life insurance policy into a powerful gift that costs you little today but creates tremendous impact tomorrow. Whether you have an existing policy you no longer need or choose to purchase a new one, naming the Tidewell Foundation as a full or partial beneficiary offers significant tax advantages while ensuring your values live on through compassionate care..

CREATE A GIFT ANNUITY

A Charitable Gift Annuity, Charitable Remainder Trust, or Charitable Remainder Annuity Trust provides you with reliable income for life while reducing your tax burden. This win-win approach allows you to support the Tidewell Foundation's lifesaving work while receiving financial benefits that serve you during your lifetime.

GIFT STOCKS

Donating appreciated stocks directly to the Tidewell Foundation is a smart way to make a significant impact. You'll receive a tax deduction for the full market value while avoiding capital gains tax on the appreciation – maximizing both your gift and your tax benefits.

GIFT A VEHICLE

If you have a car, boat, or motorcycle you no longer need, it can become a gift of compassion. The Tidewell Foundation can arrange for pickup and sale at auction, and you receive a tax receipt for your generous donation – turning something sitting idle into life-changing support for families in their most difficult moments.



A Legacy of Compassion

*"After my husband died, he was at the hospice house in Port Charlotte for a month in 2007. In 2010 I decided to start donating on **Giving Tuesday** as a thank you."*

-Neva, Legacy Society Member

"I love what hospice does. I love the idea of what hospice is and decided to donate. It's warm to my heart."

-Kathy, Legacy Society Member

Our Generous Donors

OCTOBER 1, 2024 – SEPTEMBER 30, 2025

Leaders Circle

\$250,000–499,999

Bishop Parker Foundation

Estate of Steven A. Bollan

The Community Foundation
of Sarasota County, Inc.

Estate of John C and M K Moyer

President's Circle

\$100,000–249,999

Eileen V. Gilbert Trust

Schiffman, Sumiko Admin Trust

Estate of Robert G. Diener

Estate of Thomas F. McGuire

Advocate Circle

\$50,000–99,999

Estate of Deanna G. Keel Doud

Estate of Joan P. Jacobson

Estate of John Kauffeld

Estate of Leon Reckinger

Estate of Margo K. Wirth

Estate of Sandra Jo Kifer

John D. and Julia A. Osborne

Larry and Patty D. Smith

Peter Dominic Maggi &

Gloria Dean Maggi Living Trust

Quent and Helen Evans

Charitable Estate Fund

Walter C.* and Renee W. Eppard

Friend's Circle

\$10,000–49,999

ANONYMOUS (2)

Acrisure LLC

Robert J. and Shirley F.* Adams

Estate of Edwina J. Anthony

Robert L.* and Kathryn Baker

Estate of Beverly B. Barish

Myrna Bedford

Lois Bock

James and Donna Boldt

Susie Brickell

Vernon G. and

Sandra J. Buchanan

Caldwell Trust Company

William G. and Carol S. Clendenin

Vincent and Donna Contino

Harold & Evelyn Davis Trust

Richard P. Davis

Alan Dormeyer and Joann Day

Dignity Memorial

Frank J. Dupuis

Joyce Eckel

Estate of Steven E. Fisher

Estate of Wilma Yoder Glazener

Diane Green

Letitia Griffin

Walter Haskins

Kathleen Holmes

William R. and Elizabeth Johnston

Michael's On East

Sue L. Morey

Estate of Margaret Perini Myette

Estate of Sandra M. Nauta

Estate of Richard D. O'Donnell

William F. & Anne R. Ouchark

Susanne J. Page

Michael I. Pass

Yvonne Popa Rev Trust

Terry and Colette M. Purcell

Renaissance Charitable
Foundation, Inc.

Bernard Renois

Lynn Rimell

Colin A. and Cheryl Robertson

William G. &

Marie Selby Foundation

Reuben L. and Eileen* Seltzer

Everett (Dewain) and

Beryle Silvernale Trust

Troy Silvernale

Estate of

Dr. Marlene A. Spencer

Astrid Stephan

Nancy J. Swart

Joanne J. Webster*
Wellsky, Inc.

Circle of Compassion

\$2,500–9,999

ANONYMOUS (5)

Academy Insurance Agency

Alfred S. Rose

Paul K. and Ann C. Moran

Appleby Charitable

Foundation

Aviva Senior Living

Barbara G. Zdziarski

Bill Quinn

Blalock Walters, P.A.

Boar's Head Provisions Co., Inc.

Brown and Sons

Funeral Homes, Inc.

Carl W. and

Elaine P. Meyer Trust

Carol B. Williams

John and Catherine Cranor

Catherine Emerson

Catherine Kuhlman

Charles J. Griffiee

Christopher Merritt

Christy Buckley-Currie

Columbia Restaurant

CoolToday

David Deluca

David and Toni Lyons

Diana L. Paver

Diane Da Costa

Edgewater Club, Inc.

Edris C. Weis

Elizabeth Prange

Eric O. Satterley

Estate of Cynthia R. Marr

Estate of Eva T. Slane

Estate of Rosemary Howard

Estate of Roslyn P. Haney

Ferguson Skipper, P.A.

Frances Barletta

Frank and

Grace Tedesco Memorial Fund

Frank Vicino

Fraternal Order

of Eagles #2756

Frederick J. and

Phyllis C. Bueche Fund

Gail M. Staib

Donald T. and

Georgia C. Anderson

Gerda Maceikonis

Gold Coast Eagle

Beer Distributors

Greater Houston

Community Foundation

Henry A. and Barbara D. Tafaro

Herman E. &

Helen H. Turner Foundation

Hobart K. and Janis F. Swan

Ian Black Real Estate LLC

Irene S. Pecuszok

Jack V. Robertson

Jaime Marco Evolve

Business Consulting

Jan Miller and James K. Culter

Jane Mack

Janet L. Jorgensen

Jason E. Toale

Jeffrey P. and

Ellen Steinwachs

Jennifer Camporoni

Joan Whitehead

John A. Ernst

John J. and Nancy L. Kelly

John V. Buntel

Jonathan D. and

Amy Fleece

Judith A. Dannewitz

Judith T. Berlow

Granville and

Judy A. Morris

Philip and Julie Delaney

Julie Szymczak

June Beyer

Paul and Kama Kett

Michael and

Kathleen Martella

Kathryn Morris

Kays-Ponger &

Uselton Funeral Homes

and Cremation Services

Kim Ambrose Inc.

Kingsley Event Consulting

L. J. Daane*

Ladonna Kiefer

Lake Club TLC

Women's Giving

Circle Fund Two

Our Generous Donors

OCTOBER 1, 2024 – SEPTEMBER 30, 2025

Lakewood Ranch

Community Foundation

Leadership Simplified

Lerner Cohen Healthcare PA

George H. Schofield

and Linda M. de Mello

Louis & Gloria Flanzer

Philanthropic Trust

Gary and M. Kathleen Hendricks

Manatee Community

Foundation, Inc.

Marilyn B. West

Mark Cook

Mark and Diane Kays

Robert W.* and Mary Flanders

Mary G. Swartz Trust

Mary Wilson

Michael R. and Tammy Uselton

Michael S. Plunkett

John M. and Michelle M. McKay

James and Misdee Miller

Morton's Gourmet Market

Nancy Meadows

Larry and Nicci Lieberman

Observer Media Group

Patricia E. Forshee

Paul C. and

Sharon A. Steinwachs

Renee G. Stevens

Richard E. Aschenbrenner

Robert Hrabovecky

Roger and Sally Efron

Roger C. and Alisa L. Pettingell

Roma and Don Marshall Fund

Rosalie Hardman

Rosemary T. Williams

Rotary Club of

Lakewood Ranch, Inc.

Ruth Mendius

S & S Electric Company

SageView Advisory Group, Inc.

Sam Scitunno

Sarasota County Foundation

Sarasota Ford

Sarasota Retina Institute

Sarasota Scene Magazine

Scott F. Gurr

Semmes L. Brightman

Sisterhood For Good

Stephen J. and Redenta Picazio

Susan Lorenti

David and Susan Macrae

Robert and Susie Melum

Suzanne J. Biviano

Tammy Karp

Ted Von Glahn

The Estate of Anne C. Wood

The Junior League of Sarasota, Inc.

The Northern Trust Company

The Otto Group at

HighTower Advisors

The Rowan Foundation, Inc.

Thomas A. McEntee

Thomas L. and Sharon Taylor

Thomas and Cynthia A. Stuhley

Venice Golf and Country

Club Foundation

Venice Ranch Mobile

Home Estates

Vernon R. Stephens, Jr.

W Central FL/Manasota

Chapter Hospice

and Palliative Nurses

Wael Alokeh

Walter C. Theurer

William and Kris Schulte

William Schulz

Youthful Aging Home Care

Annual Donors

\$1,000-\$2,499

ANONYMOUS (6)

1st Source Bank

Alexandra Armstrong

Allison Anderson

Altec Lakes & Natural Areas, Inc.

Amber Whaley

Amy Handel

Andrew J. and Elaine R. Nutlay
Ann M. Welischar
Anna Smith
Anna Welsh
Arnold J. Vance
Arthur P. and Julie A. Belbot
Atlas Insurance
Ballard Smith
Barbara A. Glanz
Barbara B. Freeman
Barbara J. Martinage
Barbara Marlow
Barbara Ryder
Barry Freidenreich
Bea Chafee
Beth Becknell
Betsy Garner Wyant
Bev & Brad Hahn
Beverly A. Harms
Blue Ridge Hospice, Inc.
BOA Sisterhood Circle #155
Brenda Rae Coor
Brian Hoban
Brian M. Roberts
Burton and Gail Sack
Candice Kush
Candice Sherman
Carla Malachowski
Carlo and Rebecca de Rosa
Carole G. Dorsey
Carole R. Kilby
Catherine C. Tiemeyer
Catherine Slusser
Celeste Byers

Charitable Adult Rides
& Services, Inc.
Charles and Minnie Powell
Chris Tabet
Chris Wronsky II
Christine D. Kennedy
Christine J. Torgerson
Christopher Hacker
Colin and Linda Atkins
Connie L. Schindewolf
Cynthia Griffith
Cynthia J. Kuhlman
Cynthia Watson
D. Anthony Jones
Daniel and Susan Bracciano
David and Hannah D'Ottavio
David Kovarik
David Mattson
David S. Vershel
Deborah Vincent
Decorative Paver Concepts
Delesa and Michael Morris
Don and Nancy Burrer
Don Bingham
Donald and
Claudia E. Zimmerman
Dorothea Morris
Douglas Peters
Douglas R. Brown
Ed and Annette Eliasberg
Ed Valek
Edward G. Boettcher
Edward J. and
Annick Whitehead

Edwin E. Van Pelt
Eileen P. Scudder
Elizabeth A. Nicely
Elizabeth C. Pennewill
Elizabeth Deu
Elizabeth Hansen
Elizabeth Hisey
Elke Lanphar
Erin Urban
Evelyn A. Brian
Evelyn Drake
Fermin C. and Jodi L. Miranda
Franklin C. Mann Trust
Freedom Village of Bradenton
Gail A. Elliott
Gary D. and Janice M. Smith
Gary Montin
Gary Swindell
George and Sarah Hudson
Gerald and Sydney Barkholz
Give Lively Foundation, Inc.
Glen Kondos
Glenn Glatfelter
Gloria Bracciano
Grandmothers of La Casa
Gregory T. Taylor
Henry Ruis
Herbert Gunderson
Howard K. Elder
James Lampl
James R. Graham
James R. Woods
James Schoendienst

Our Generous Donors

OCTOBER 1, 2024, SEPTEMBER 30, 2025

Janet Findley	Karen A. Kunz	LPGA Amateur Golf Association
Janette S. Albrecht	Karen Davis-Pritchett	- Manatee Chapter
Jennifer Garner	Karen L. McCarty	Lyle West
Jessica H. Stevenson	Katharina Curless	Lynn Corcoran
Jo Ann Storms-Santell	Kathleen A. Jackson	Lynn E. Blackledge
Joan Flanigan	Kathleen S. Tardy	MAH Horticultural Services
Joan M. Stancil	Kellie A. Moran	Mareta Nestel
Joann M. King	Kenneth and	Maria P. Reba
Joe Borgia	Christine Kurncz	Maria Warden
John and Kelly Franz	Kenneth Daley	Marian Hainsworth
John and Marianne Groenings	Knights of Columbus	Mark Russow
John C. Moyer*	Assembly 3192	Martin D. Rich
John Guarino	Laura B. Kopple	Mary Forristall
John Nicholas	Lee Thompson	Mary Lou Stricker
John Stevens	Lincoln Financial Group	Mary Milne
Joseph Krueger	Linda B. Moore	McCrary Law Firm
Joseph Richter	Linda D. Garvin	Meagan Burke
Joseph T. and Jaye Semrod	Linda G. Tucker	Melissa Patterson
Joseph Vicari	Linda J. Hermes	Melissa Sankovet
Joyce Koppel	Linda Plaster	Melody Worthley
Joyce Turnblom	Linda Wenck	Mercedes Smith
J. McLaughlin	Live Oak RV Resort	Michael P. Pollick
Juanita V. Rathfon	Lori Greenbaum	Michael Roehr
Judie Szuets	Louis and Carol Furlong	Monroe Warrington
Judith A. McDonald	Louis and Mary Eurice	Nancy J. Weller
Judith B. Millspaugh	Louis H. and	National Football
Judith Yancey	Rosemary M. Oberndorf	League Referees Association
Julie Tuttle	Louise C. Conklin	NaturZone Pest Control
Karen A. Benning	Louise Noyes-Balboni	Ned Katterheinrich

Neva M. Burton
Palm Printing
Patricia Hofmaster
Patricia McClure
Patricia Risse
Patti A. Wilkins
Paul Adams
Paul Bowman
Paul Chomicki
Paul Jackomin
Paul R. Miller
Paula Amesbury
Peace River Citrus Products
Peter Benjamin
Philip and Ilene Lasco
Philip and Laurie Perkins
Pink & Navy Boutique
Priya Jayakody
Randy Baustert
Raymond Ferens
Reid D. Farrell
Renaë Berkebile
Rex and Sherry Hosfeld
Richard and Emogene*
Georgiades
Richard H. and Betty A. Nimitz
Richard K. and Donna M. Bauer
Richard T. Van Alen*
Rita Bell
Robert A. Kile
Robert and Barb Schaal
Robert and Frances Storey
Robert Blank
Robert Burger

Robert E. Stewart
Robert Friedman
Robert L. and
Beverly A. McClaflin
Robert Lytle
Robert P. and Sharon A. McNutt
Robert W. Lewis
Robert Waechter
Robyn Schmitt
Roxanne Joffe
Ruth A. Farb
Ruth B. Deterding
Ruth Jansson
Saida J. Bouhamid
Sally DeGrave
Sandra F. Greer
Sarasota Memorial
Health Care System
Sarasota Memorial
Healthcare Foundation
Schroeder-Manatee Ranch, Inc.
Scott T. Ritter
Shannon Perkins
Sharon Chasteen
Sir Speedy Sarasota
Socius Foundation
Stacy M. Groff
Stephanie D. McGowan
Stephen and Beth Knopik
Stephen and Lucia Spotte
Steve Zielinski
Steven D. and
Carolyn Roskamp
Susan E. Williams

Susan T. King
Susan Watterson
Susannah Hammersley
Suzanne E. Marsh
Suzanne Perry
Tandem Construction
Target Graphics, Inc.
Tarah Lowry
The Scout Guide
Theodore Martin
Theresa Dale
Thomas Reiter
Thomas Testwuide, Jr.
Timothy J. Jirschele
Town Square
United Way of South
Sarasota County, Inc.
Vance Piccin
Vincent and
Margaret T. Maisto
William and
Margaret Tominosky
William Schulz
Williams Parker
Attorneys at Law
WL Auto Group
Woodruff & Sons, Inc.

**Foundations, Grantors
and Donor Advised Funds**
ANONYMOUS (4)
The Florida United Methodist
Foundation, Inc.

Our Generous Donors

OCTOBER 1, 2024 – SEPTEMBER 30, 2025

Alfred Rose Foundation

Allison Anderson Fund

American Online Giving
Foundation

Anita and Franco Menezes
Charitable Gift Fund

Appleby Charitable Foundation

The Bailey Family Giving Fund

Charles & Margery

Barancik Foundation

Barletta Family Charitable Fund

Bishop Parker Foundation

Boldt Family Charitable Fund

Borgia Giving Fund

Boscia Family Foundation

Bruno – Shola Family Trust

Buchanan Family Foundation

The Candice Sherman
Charitable Fund

Caroline and Kirsten Russell
Charitable Fund

Catherine G. Bain Fund

Charities Aid

Foundation America

Charles and Marion Walker
Charitable Fund

Ciardi Giving Fund

Claudia Whitehurst Health Fund

Communities Foundation
of Texas

Community Foundation
of Broward

Cusick Family Foundation

The David and Susan Rock
Charitable Gift Fund

David Vershel

Charitable Gift Fund

Davis Family Arts Foundation

Dayton Foundation

Depository, Inc.

DJD Foundation

The Donahue Fund

Doremus Family

Charitable Fund

Doris J. Cook Foundation

The Doug and Diana
Rothausser Fund

Drs. Sank and Shaffer
Charitable Fund

The Frank J. and Lenora Dupuis
Foundation, Inc.

Eluned and Edward Russell
Charitable Foundation

Eppard Family Foundation

Etchepare Family Foundation

Evalyn Sadlier Jones Foundation

Evelyn Brian Charitable Fund

Felice Schulaner and
Dennis Rees Fund

Fergeson Skipper
Donor Advised Fund

Frank and Cynthia Williams
Charitable Fund

Franklin Fund FBO Hospice
of SW FL

Garner Family Foundation

Give Lively Foundation, Inc.

GlaxoSmithKline Foundation

The Grant Family Gift Fund

Greater Houston

Community Foundation

The Diane and Gilbert Green
Charitable Foundation

Gulf Coast Community Foundation

Walter Haskins Fund, in memory of
Stacey K. Haskins

Herman E. & Helen H. Turner
Foundation

Norman and Lisa Hessler
Foundation

Hobart K. and Janis F. Swan
Donor Advised Fund

Hoffa Memorial Foundation

Jack & Fran Heller

Donor Advised Fund

James and Marlyn Thornton
Charitable Fund

Jane and Bernie Regan
Family Fund

Joel and Sandra Cuba
Advised Fund

The John and Kelly Franz
Family Fund

John E. Groenings
Charitable Trust

Johnston Family
Fund of the Manatee
Community Foundation

Jonathan & Ellen Maltz
Charitable Fund

Jonathan Lee Raleigh
Charitable Fund

Jones Family Charitable
Foundation

Jordan Family
Charitable Fund

Julia Solleveld Osborne
Donor Advised Fund

Just Jim Fund

The Arthur S. Karp Family
Foundation

The Kathy and Sam DiBiase
Donor Advised Fund

KBR Foundation, Inc.

John and Catherine
Kennedy Fund

Kuuskvere Fund

L A N Family Foundation

La Bont Bank of America
Charitable Gift Fund

Lakewood Ranch Community
Foundation

Lang/Goldstein
Endowment Fund

Lawrence and Lynda
Hollander Fund

Leanna's Inspiration Fund

Louis & Gloria Flanzer
Philanthropic Trust

Maceikonis Family
Foundation Inc.

The Maclure Charitable Fund
Manatee Community
Foundation, Inc.

Manatee County Government

Mark A. Freeman Charitable
Giving Fund

Maroon Family Foundation at
Gulf Coast Community
Foundation

Marti and Marc Grinberg
Family Fund

Martin D.and Barbara H.
Rich Family
Charitable Foundation

Mary Scharf Foundation

Mary Wilson Donor Advised Fund

McCune Family Foundation

McDowell & Da Costa
Donor Fund

McIntyre Noonan Family Fund

Michael J Duffey Trust

Misdee Wrigley and
James Mather
Miller Charitable Foundation

Ann C. Moran Charitable Fund

New Hampshire Charitable
Foundation

Odile L. Robertson
Restricted Fund

ONCC Foundation

Overbeck Charitable Fund

The Patterson Foundation

The Patterson Foundation
Pay it Forward Fund

Perry Family Fund

Petrone Family Fund

Pledgeling Foundation

The Proverbs Three Five Six Fund

Rathfon Family Charitable Fund

Richard and Betty Watt NimtZ Fund

The Richard and Donna Bauer
Charitable Fund

Richard and Jean B. Bugg Fund

River of Grace Foundation

Robert and Debbie Toale
Charitable Fund

Robert Kopple
Endowment Fund

Ronnie & Diane
Humanitarian Fund

Rotary Club of Lakewood
Ranch, Inc.

The Rowan Foundation, Inc.

Ruth H. Landes Fund

Our Generous Donors

OCTOBER 1, 2024 – SEPTEMBER 30, 2025

Sack Family Foundation

SahanDaywi Foundation

– Substation 1

William and Barbara Salsbury

Endowment Fund

Sarasota County

Foundation

Sarasota Memorial

Healthcare Foundation

Schuer Family Fund

Schulte Family Fund

The Sam M. Sciturro Family

Foundation

William G. & Marie Selby

Foundation

Semrod Family Private

Foundation

The Shapiro Charitable

Foundation

The Sibley–Saltonstall

Charitable Foundation

Sisterhood For Good

Socius Foundation

Stan Teague Charitable

Account Fund

Steinwachs Family Fund

Stephen and Lucia Spotte

Donor Advised Fund

Stuhley Charitable Foundation

Ray and Nancy Swart

Family Fund

T & L Charitable Fund

Hank and Barbara Tafaro

Charitable Foundation

The Community Foundation of

Sarasota County, Inc.

The Ralph S. French

Charitable Foundation

Thomas and Sharon Taylor

Charitable Trust

The Triplett Family Foundation

United Way of South Sarasota

County, Inc.

United Way Suncoast

Lloyd Ussery Charitable Fund

Venice Golf and Country

Club Foundation

Vicari Family Charitable Fund

The Vicino Family

Charitable Fund

Village of Holiday

Lakes Flower Fund

W Central FL/Manasota

Chapter Hospice

and Palliative Nurses

Watterson Giving Fund

Weis Family Foundation

Wenk Family Charitable

Foundation

Wethe Family Foundation

Wexler Family Foundation

Will A. Ryall, Jr. Fund

William and Debra Buttaggi Fund

William and Margaret Walker

Charitable Giving Fund

Wilson–Wood Foundation, Inc.

Winner Charitable Fund

The Junior League of

Sarasota, Inc.

Morgan Stanley GIFT

Legacy Society

ANONYMOUS (14)

Janette S. Albrecht, M.D.

Francine Alexander

Susan Arndt

Ronald L. Aubel

Linda Bakonyi

Tom and Marie Belcher

Larry W. Benson and

Jerry D. Waterman

Family Trust

David H. Bettenga

Hwa C. Beyer

John Bodenburg and

Nancy Helmer

Robert Bole

Rozalind Brack

Theodore M. Brenkacz

Phillip Roy Brewer In Loving
Memory of Melissa
Sue Brewer

Christy Buckley-Currie

Neva Burton

Patricia J. Case

Kathleen F. Cellura Foundation

George and Joyce Chase

Diane Chechik-Temple

Claudia S. Christensen

Joseph Cincotta

Joel S. Cuba and Sandra B.
Cuba Charitable Fund

Antonette M. Cunningham

Robert Davies, Jr.

Jan and Bill Davis

David DeLuca

Neena Derf

Caroline and Anthony DeSantis

James and Barbara Doll

Howard and Ann Drazic

Wyn Entis

Eppard Family

Gerda Fife

Hank and Melinda Foster

Cynthia D. Frank In
Memory of Michael D. Miner

William Geller

Richard Georgiades

Thomas E. Gerrity

Cheryl and Tom Gibbons

Jack F. Greer

Charles J. Griffee
In Memory of Rosemary Griffee

Bev & Brad Hahn

Michael and Mary Jane
Hartenstine

Linda A. Heg

Adrienne Johnson

Sheryl and James Kaiser

John J. Kestly

Jerry and Sondra Kuskin

Michael Lefrois

Mrs. Barbara J. Lupoff

Dr. Barbara Maier

Joan S. and John D. Marsh

Debbie Mason

Demir and Gamache Family

Bill and Karen McCarty

Judith A. McDonald

Bonnie McIntyre

Jan Miller

Marvin C. and Glenda H. Miller

John and Charlene Moeckel

Sue Lehmer Morey

John and Marianne Moyer

Margaret P. Myette

Stephen R. Holten and
Lisa Napolitano

Alexander Nichols

Dr. Terry L. Palls

Gretchen Phelan

Stephen and Redenta Picazio

Deborah Poff and Valarie Clark

Polly Pond

Karen Price

William & Kathy Priesmeyer

Gerry Radford

Marta D. Rapoport

Denise A. Rech

Bernard A. and Mary V.
Renois Family Fund

James R. Roorda

Steven D. Roskamp

Bob and Linda Shea

Jeanne W. Slagle

Stanley P. Stephenson

Mary Szydlowski

Robert L. Taflinger

Susan P. Thomas

David F. and Nancy O.
Thomson Trust

R. T. Van Alen

Grant and Kathy Vanderpool

Helen L. Vetter

David Voelker

Marilyn Briggs West

Paula J. Whiting- Self
Kenneth and Rosemarie
Williams

Gail S. Winchester

R. Todd Craig and
Ronnie Winters

Debra L. Wohlers

Barbara G. Zdziarski

David and Peggy
Zimmerman

Tidewell Hospice

HERE FOR LIFE'S MOST IMPORTANT MOMENTS

Hospice care plays a crucial role in providing support, dignity, and comfort to those at the end of life. At Tidewell Hospice, compassionate care is a core mission, reflected daily in the meaningful impact on patients and their families.

“No one should ever die alone, afraid, or in pain,” says Brad Perkins, who began serving as Tidewell Hospice president in April 2025. With extensive experience in both clinical practice and healthcare administration, Perkins brings a steadfast commitment to ensuring consistently high-quality service while preserving Tidewell Hospice’s deep community roots. To maximize resources and enhance care delivery, Perkins collaborates with two other hospice presidents within the Empath Health network, sharing technology innovations and best practices across organizations. This collaborative approach enhances operations while ensuring each program maintains its distinct community identity.

Through organizational growth and evolution, Perkins remains dedicated to preserving Tidewell’s reputation as a pillar of stability and compassion in the region. Thanks to strengthened operations, enhanced coordination, and leadership grounded in patient-centered care, Tidewell Hospice **served 10,526 lives** over the past year.

At Tidewell, dignity at life’s end is the unwavering priority. Whether serving a homeless individual or a corporate executive, the goal remains constant: ensuring a peaceful passing. The holistic approach extends beyond patients to embrace families and entire communities, providing comprehensive support during life’s most difficult moments.

Some mistakenly believe that hospice means giving up hope, but Tidewell Hospice focuses on helping patients live fully as long as possible. From music therapy to pet therapy, specialized services enhance quality of life and bring comfort. Early hospice referrals allow patients to enjoy their remaining time without unnecessary suffering, surrounded by love and support.

While change is constant, one fundamental truth remains: Tidewell Hospice is here, providing steadfast support of patients and families through personalized, responsive, and compassionate care.



Impact That Honors Life

TIDEWELL HOSPICE



10,524

Lives Served



4,896

Lives Served in Sarasota County



2,512

Lives Served in Charlotte County



3,553

Lives Served in Manatee County



319

Lives Served in DeSoto County



699

Total Number of Employees



\$2,991,250

Value of Time Donated by Volunteers



94,163

Volunteer Hours Logged

Licensing/Accreditation

The National Institute for Jewish Hospice
Accredited

Medicare and Medicaid
Certified

CHAP
Accredited with Deemed Status

Florida State ACHA
Licensed

The Joint Commission
Accredited

Welcome Brad Perkins

HOSPICE PROGRAMS

This past spring, Tidewell Hospice welcomed Brad Perkins as President. With extensive experience leading regional healthcare service providers, Brad brings fresh vision and deep operational expertise to this vital role.

Since joining in April, Brad has witnessed what makes Tidewell special: caring, loving, compassionate people doing the right thing. He recognizes that hospice care is a calling, performed by dedicated individuals who truly love their work.

Brad's priorities include expanding access to Full Life Care services, increasing community awareness of hospice and palliative care benefits, and enhancing employee recruitment and retention. His leadership is guided by four core principles: ensuring everyone receives a "good death" – never alone, afraid, or in pain; treating each patient by the "mom rule"; always doing the right thing; and honoring the trust of Tidewell Hospice's 1000+ team members.

We're grateful to have Brad leading Tidewell's mission of providing dignity and comfort to individuals living with chronic or advanced illness.



Brad Perkins
President, Tidewell Hospice

Tidewell Hospice Board of Trustees

Oct 1, 2024 – Sep 30, 2025

Renee Eppard
Chair

Mindy Ryals
Vice-Chair

Fermin Miranda
Treasurer

Daniel Deems, MD, PhD
Secretary

Kwame Alexander
Board Member

Gary Butler
Board Member

James Fiorica, MD
Board Member

Robert Hillstrom, MD
Board Member

Marge Maisto
Board Member

Matthew Mayper, Esq
Board Member



Tidewell Foundation

THE TEAM

Delesa Morris, MS, CFRE
President

Valerie Vitale
Director of Philanthropy
Becky Abraham
Director of Philanthropy
Morgan Hoerner
Philanthropy Associate

Lisa Adams
Events Manager
Kristen Falzone
Creative Services Manager

Lorraine Constantino
Administrative Manager
Jasmine Martin
Data Manager
Larry Richards
Donor Services Assistant

TIDEWELL TREASURES

Joan Di Blanda
Director of Resale Store Operations

Tisha Przybylski
Store Manager-Sarasota
Chance McCloughan
Assistant Store Manager- Sarasota
Erika Perkola
Store Manager-Venice
Carrie Smith
Assistant Store Manager- Venice



SPONSORS

WHO CONTINUE TO MAKE AN IMPACT

OUR CORPORATE SPONSOR

Dignity[®]
MEMORIAL

OUR COMMUNITY SPONSORS



CALDWELL TRUST COMPANY
PERSONAL • TRADITIONAL • INDEPENDENT

 **ACRISURE[®]**

We are deeply grateful to our annual and corporate partners whose ongoing support makes the Foundation's work possible. Thank you for your continued commitment.

The Tidewell Foundation, Inc., is a registered 501(c)(3) non-profit corporation. A copy of the official registration and financial information may be obtained from the Division of Consumer Services by calling Toll-Free 1-800-435-7352 or 1-800-352-9832 (en Español) or going to the department's website floridaconsumerhelp.com. Registration does not imply endorsement, approval, or recommendation by the state. One hundred percent (100%) of the donation is received by the Tidewell Foundation, Inc. Charitable solicitation registration #CH63240.

A Legacy That Lives



Tidewell Hospice provided care for my wife that went far beyond medical care. They treated her with compassion and dignity and supported our family with kindness through the most difficult time of our lives. Including Tidewell Foundation in my charitable giving plan is my way of giving back – to honor what they did for us, and to help ensure that others receive the same level of care and compassion. I encourage anyone touched by their work to consider supporting Tidewell Foundation through lifetime or legacy giving. It truly makes a lasting difference in the lives of patients and their families.

-Jon Griffie and Family

A gift in your will is an easy way to make a big difference. By including the Tidewell Foundation in your will, you ensure that we can continue to brighten the lives of the patients, families and residents of communities we serve for years to come.

A Legacy Gift: The Gift That Lives On

- **Meaningful.** Your gift ensures compassionate care for families for generations to come.
- **Personal.** You can structure the gift in many ways.
- **Reassuring.** You have access to your assets throughout your lifetime.



Questions on Gifts in your Will or Living Trusts? Scan the QR Code!

If you have already included Tidewell Foundation in your estate plans, please let us know so we can welcome you into our Legacy Society.

**CONTACT DELESA MORRIS TO LEARN MORE
(941) 552-7685 | delesamorris@tidewellfoundation.org**

TidewellFoundation.org | Stay Connected at   



Tidewell Foundation

3550 S. Tamiami Trail

Sarasota, FL 34239

(941) 552-7546

Giving@TidewellFoundation.org

EIN 85-0729071

TidewellFoundation.org

Tidewell Hospice

855-Tidewell (855-843-3935)

Tidewell.org

DONATE



Let's Brighten
Lives Together